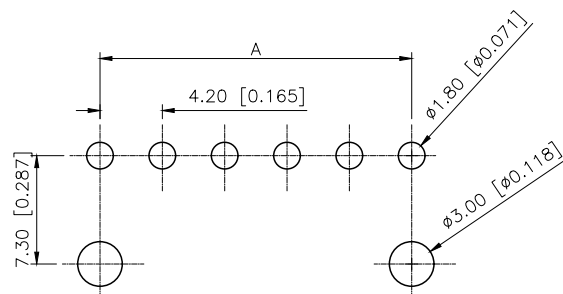
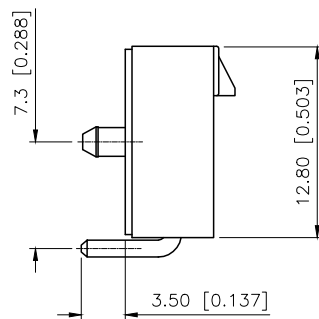
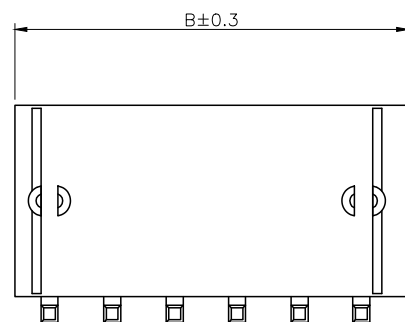
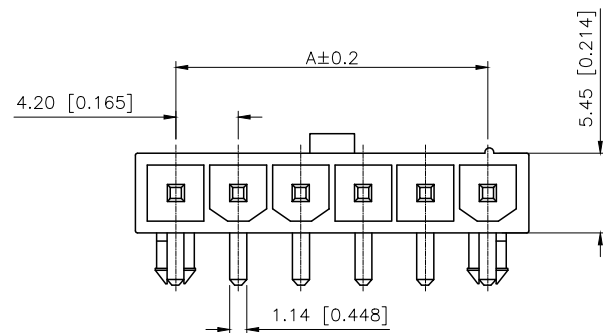
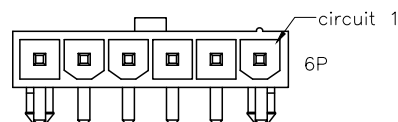
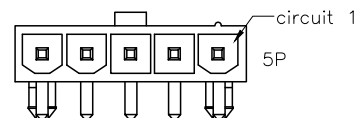
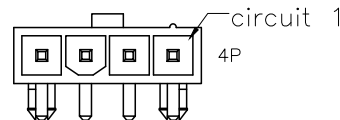
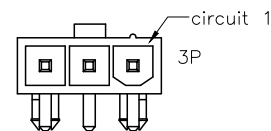
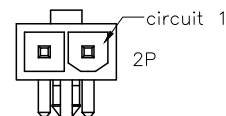


REVISIONS					
REV.	ECN NO.	LOCATION	DESCRIPTION	DATE	DESIGN
A0	N/A		INITIAL RELEASE	/	/
A1	N/A		图面升级整理图面	2025.12.22	阿树



Recommend P.C.B Layout
General Tolerance ± 0.05



■ SPECIFICATIONS

- Voltage rating: 600V AC/DC
- Current rating: 9A AC/DC
- Withstanding Voltage: 1500V AC/minute
- Temperature range: $-45^{\circ}\text{C} + 125^{\circ}\text{C}$
- Insulation resistance: $\geq 1000\text{M}\Omega$
- Contact resistance: $\leq 20\text{m}\Omega$

PART NO.:

X9357 W R-XX S-N2 SN XX
① ② ③ ④ ⑤ ⑥ ⑦ ⑧

- ① Series No
- ② Category: W-Wager
- ③ Welding Board Angle: R-Stright 90°
- ④ Row No., Pin No.: XX-02~06 P
- ⑤ Special NO.: S-With positioning column
- ⑥ Material: I: N0-PA66 94V-0; N2-PA66 94V-2
- ⑦ Plating: SN-Bright tin plating; V30-Gold 30u"
- ⑧ Color: Blank-natural color

Poles	Dimensions(mm)	
	A	B
02	4.20	9.60
03	8.40	13.80
04	12.60	18.00
05	16.80	22.20
06	21.00	26.40

X9357WR-XXS-N0SN	Nylon 66 UL 94V-0	Brass	Tin-Plated	X9357H
X9357WR-XXS-N2SN	Nylon 66 UL 94V-2			
PART NO	Material	Material(Pin)	Finish(Pin)	Suitable XKB Housing

AuGLAR	$\pm 5^{\circ}$
X.	± 0.40
X.x	± 0.30
X.xx	± 0.20
X.xxx	± 0.15
UNSPECIFIED TOLERANCES	



DESIGN	阿树	VIEW:		MODEL TYPE:	4.20 mm Crimp Style Connector
CHECKED		UNIT:	mm/in	PART NO.:	X9357WR-XXS-N2SN
APPROVED		SIZE:	A4	DWG NO.:	