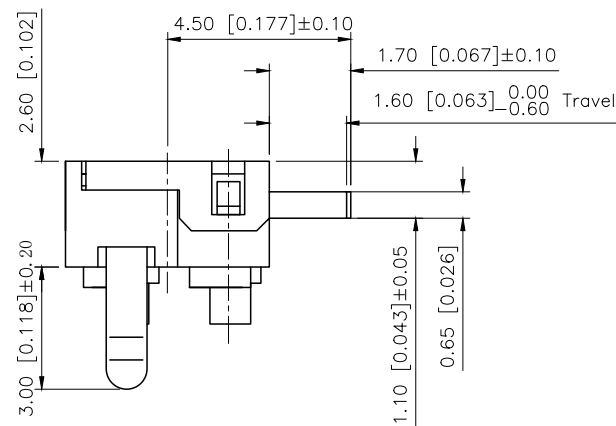
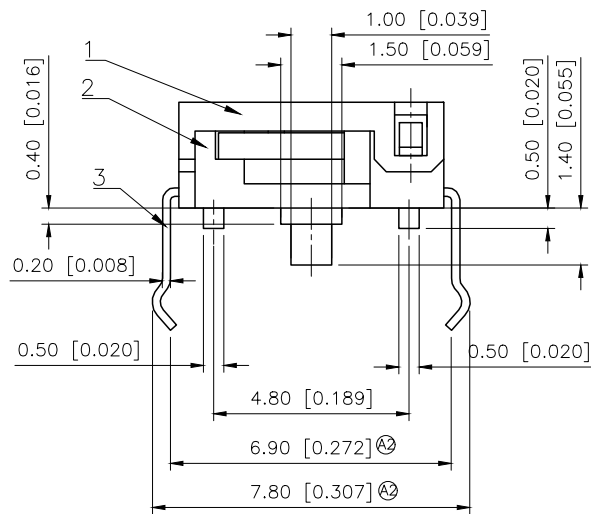
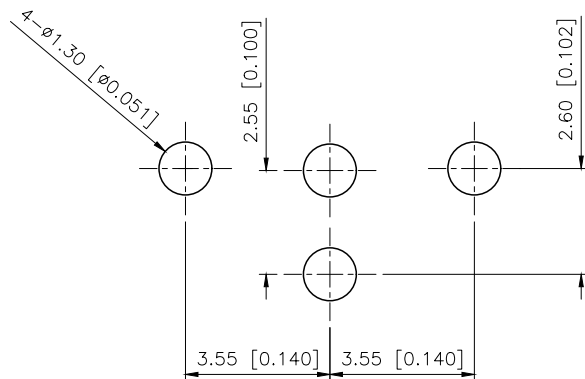
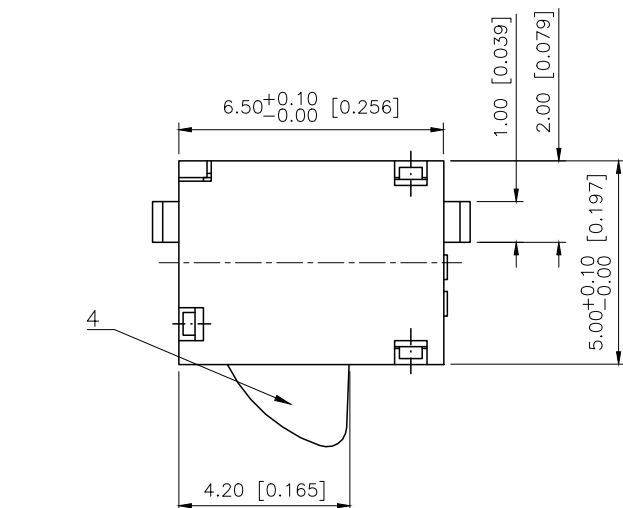


REVISIONS					
REV.	ECN NO.	LOCATION	DESCRIPTION	DATE	DESIGN
A1	N/A		图面升级整理图面	2025.06.24	阿树
A2	ECN-P-2025122001	②X2	产品尺寸, 外观及材质变更	2025.12.20	阿树

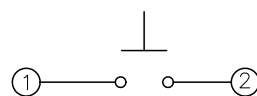


- Specifications (规格):
1. Voltage rating (额定电压): DC 30V
  2. Current rating (额定电流): 0.1A AC/DC
  3. Withstanding voltage (耐压值):  $\geq 100V$  AC/minute
  4. Insulation resistance (绝缘电阻):  $\geq 100M\Omega$  Min
  5. Contact resistance (接触电阻):  $\leq 200m\Omega$  Max
  6. Mating cycles (使用寿命): 50,000 cycles Min
  7. Temperature range (使用温度):  $-10^{\circ}C \sim +60^{\circ}C$



PCB LAYOUT

5	Contact Spring	1	Be-bronze t=0.065	Plating silver
4	Keystake	1	POM	White
3	Terminal	1	Brass t=0.20	Plating silver
2	Base	1	PAHTN	Black
1	Cover	1	PA66	Black
ITEM	PAPT NAMF	QTY	MATERIAL	FINISHING



AuGLAR	$\pm 5^{\circ}$
X.	$\pm 0.40$
X.x	$\pm 0.30$
X.xx	$\pm 0.20$
X.xxx	$\pm 0.15$
UNSPECIFIED TOLERAuCES	



DESIGN	阿树	VIEW:		MODEL TYPE:	DETECT SWITCH
CHECKED		UNIT:	mm/in	PART NO.:	TM-1022SA
APPROVED		SIZE:	A4	DWG NO.:	