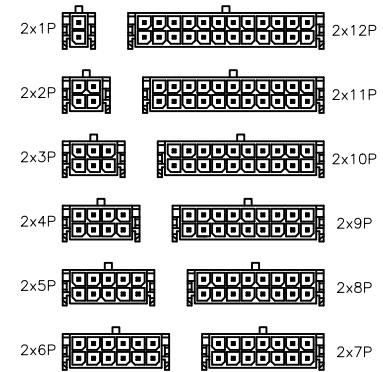
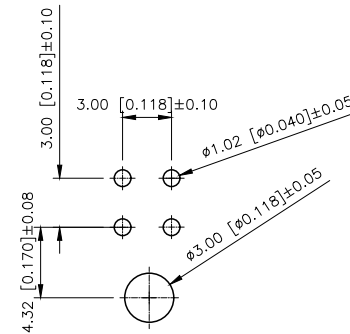
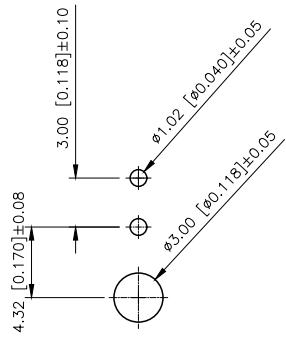
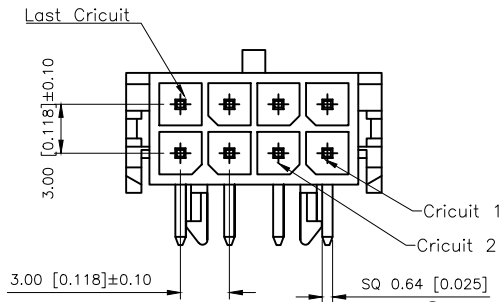


REVISIONS					
REV.	ECN NO.	LOCATION	DESCRIPTION	DATE	DESIGN
A1	N/A		图面升级整理图面	2024.07.20	阿树
A2	ECN-P-2025112803	②X1	产品尺寸变更,新增C尺寸	2025.11.28	阿树



Scale 1:3

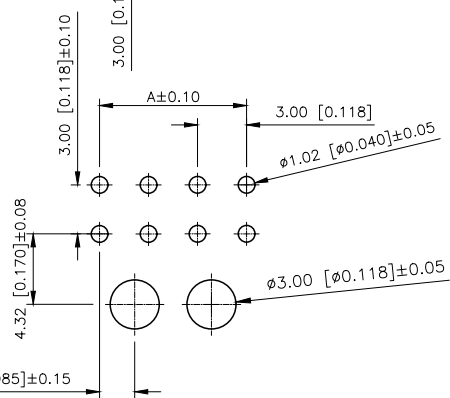
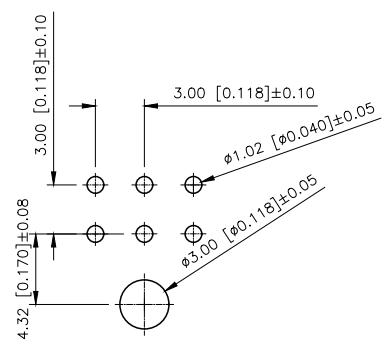
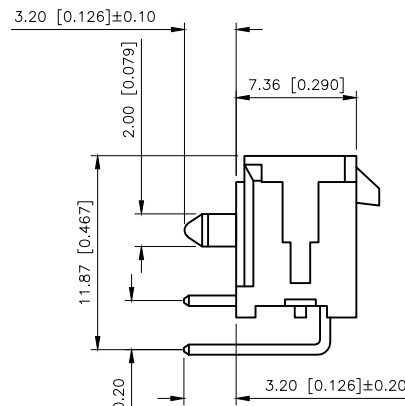
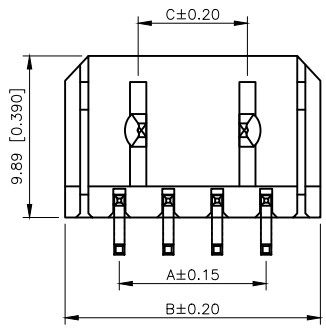
- SPECIFICATIONS
- Voltage rating:250V AC/DC
 - Current rating:5A AC/DC
 - Withstanding Voltage:1500V AC/minute
 - Temperature range:-45°C+125°C
 - Insulation resistance:≥1000MΩ
 - Contact resistance:≤10mΩ
 - After environmental testing: ≤20mΩ

PART NO.:

X3025 W R-2xXX-46 SN XX
① ② ③ ④ ⑤ ⑥ ⑦

- ①Series No
- ②Category:W-Wafer
- ③Welding Board Angle:R-Stright 90°
- ④Row No-Pin No: 2xXX-2x01P~2x12P
- ⑤Material:46-PA46 UL94V-0
- ⑥Planting:G01:Gold-Contact Gold Flash
SN-Bright tin plating
- ⑦Color:Blank-natural color

Poles	Dimensions (mm)		
	A	B	C
2x01	---	6.65	2.00
2x02	3.00	9.65	2.00
2x03	6.00	12.65	2.00
2x04	9.00	15.65	6.70
2x05	12.00	18.65	9.70
2x06	15.00	21.65	12.70
2x07	18.00	24.65	15.70
2x08	21.00	27.65	18.70
2x09	24.00	30.65	21.70
2x10	27.00	33.65	24.70
2x11	30.00	36.65	27.70
2x12	33.00	39.65	30.70



2x03P P.C.B LAYOUT

2x04P~2x12P P.C.B LAYOUT

X3025WR-2xXX-46G01	PA46 UL 94V-0	Brass	Contact Gold	X3025H
X3025WR-2xXX-46SN			Tin-Plated	
PART NO	Material	Material(Pin)	Finish(Pin)	Mates With XKB Housing

AuGLAR	±5°
X.	±0.40
X.x	±0.30
X.xx	±0.20
X.xxx	±0.15
UNSPECIFIED TOLERANCES	



DESIGN	阿树	VIEW:	
CHECKED		UNIT:	mm/in
APPROVED		SIZE:	A4

MODEL TYPE:	3.00 mm Crimp Style Connectors
PART NO.:	X3025WR-2xXX-46SN
DWG NO.:	