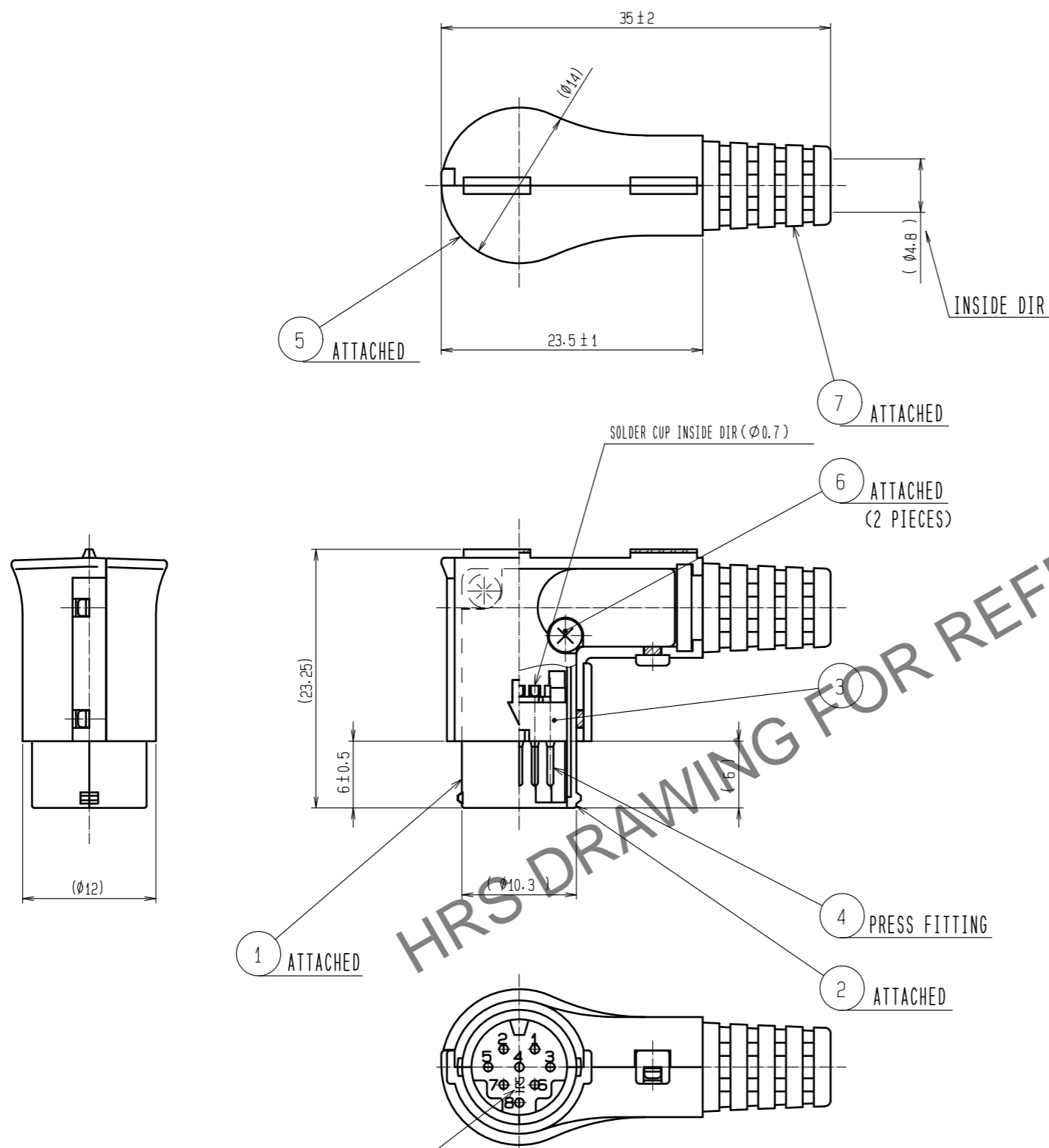


Apr.1.2026 Copyright 2026 HIROSE ELECTRIC CO., LTD. All Rights Reserved.
 In case of consideration for using Automotive equipment / device which demand high reliability, kindly contact our sales window correspondents.



HRS DRAWING FOR REFERENCE

- NOTES 1 THE CABLE PULL AND TWISTING STRENGTH AND OTHER CHARACTERISTICS MAY DIFFER, DEPENDING ON THE CABLE STRUCTURE. PLEASE CONFIRM BEFORE THE USE.
- 2 CONTACT AREA : GOLD PLATING 0.2μm min.
 TERMINAL AREA : GOLD FLASH.
 UNDER PLATING : NICKEL PLATING 1μm min.

NO.	MATERIAL	FINISH .	REMARKS	NO.	MATERIAL	FINISH .	REMARKS
4	COPPER ALLOY			7	POLYVINYLCHLORIDE	(BLACK)	UL94V-0
3	PPS	(BLACK)	UL94V-0	6	STEEL	NICKEL PLATING	TAPPING SCREW M2X4
2	ZINC ALLOY	NICKEL PLATING		5	POLYPROPYLENE	(BLACK)	UL94V-0
1	ZINC ALLOY	NICKEL PLATING					

UNITS mm			SCALE 2 : 1	COUNT 	DESCRIPTION OF REVISIONS	DESIGNED	CHECKED	DATE
HRS HIROSE ELECTRIC CO., LTD.			APPROVED : TP. KOMATSU	20201121	DRAWING NO.	EDC-043311-43-00		
			CHECKED : HY. KOBAYASHI	20201119	PART NO.	HR212-10LP-8P(43)		
			DESIGNED : TY. SUZUKI	20201119	CODE NO.	CL0112-4002-6-43		
			DRAWN : TY. SUZUKI	20201119				