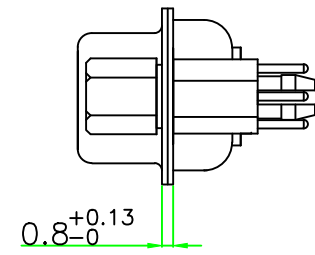
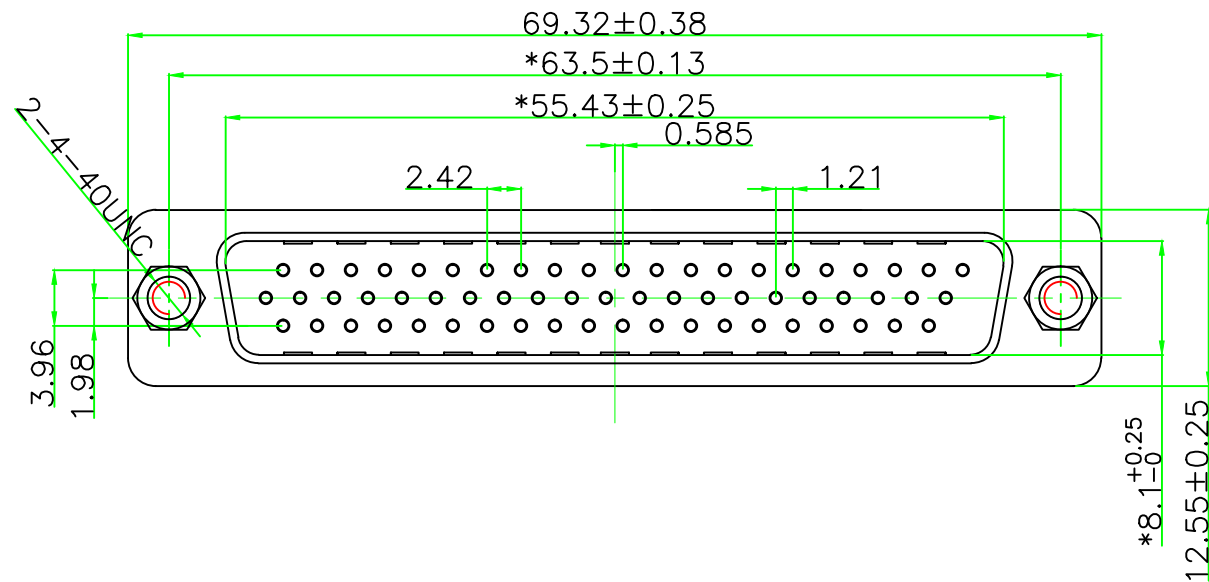


“*” Pivot Dimension

RoHS Component



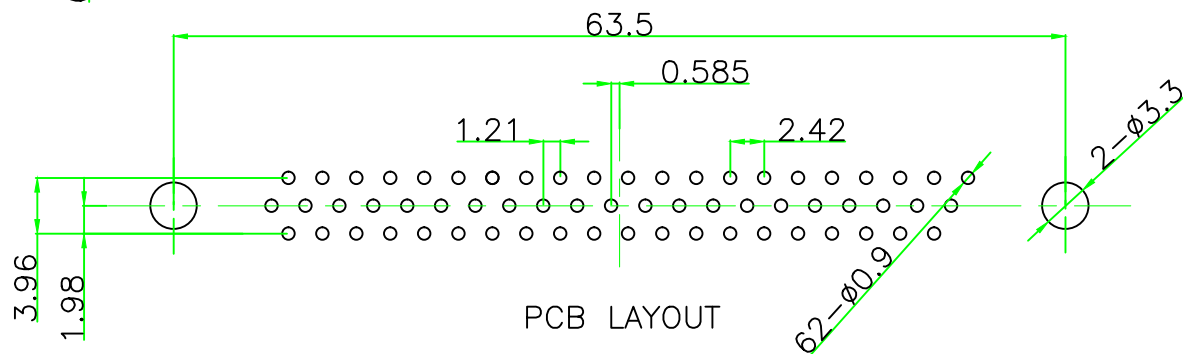
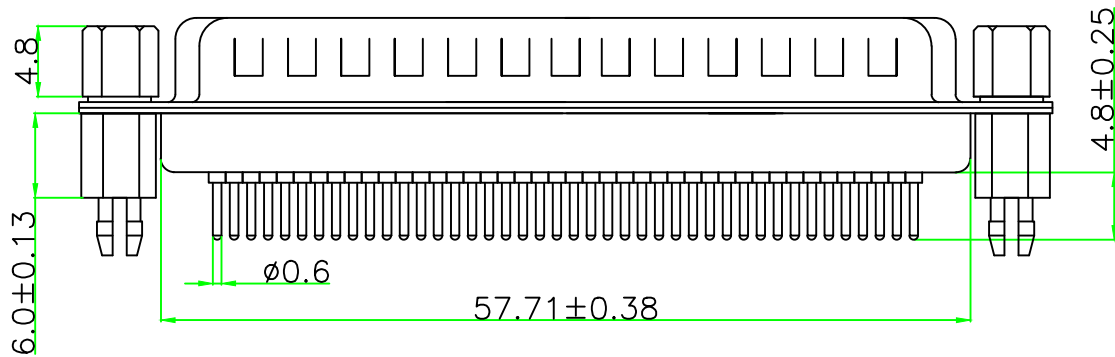
NOTICE :

1. ELECTRIC:


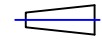
- DIELECTRIC RATING: 300V
- CONTACT CURRENT RATING: 3AMP
- CONTACT RESISTANCE: 15mΩ MAX.
- INSULATION RESISTANCE: 1000MΩ MIN. AT 500V DC
- DIELECTRIC STRENGTH: 500V AC RMS FOR 1MINUTE
- OPERATION TEMPERATURE: -55C° ~125C°

2. MATERIAL:

- INSULATOR: PBT+30% G.F (UL94V-0)
- CONTACT: COPPER ALLOY
- CONTACT PLATED: GOLD FIASH OVER NICKEL
- SHELL: SPCC
- SHELL PLATED: NICKEL/TIN
- FORK: COPPER ALLOY/PLATED NICKEL



浙江创都电子科技有限公司

TOLERANCE: XX ±0.38 XXX ±0.25 XXXX ±0.13 X* ±5° X.X* ±1°	DRAWN BY :	DATE : 2009.12.16	PART NAME: QH HDP 62 公 直焊板式铆6.0鱼叉锁4.8螺丝
	CHECKED BY :	DATE : 2014.11.05	DRAW NO. HDP-G-62P-ZC-YCLS PART NO.
 	APPROVED BY :	DATE : 2014.11.05	REMARK
UNIT: mm [inch]	SCALE: 1:1	A版	MOLD NO.