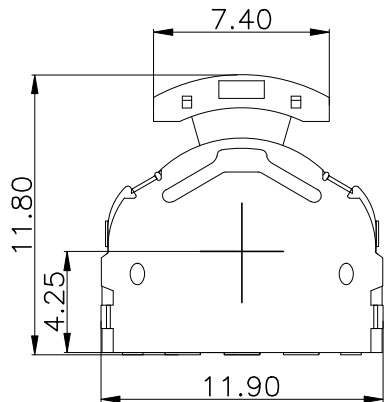
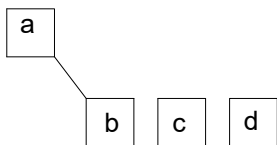


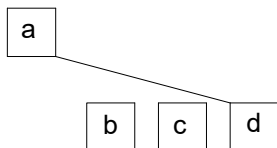
RoHS Compliant



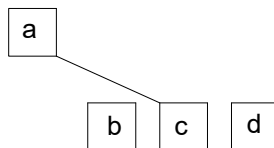
A向24°a与b通



B向24°a与d通



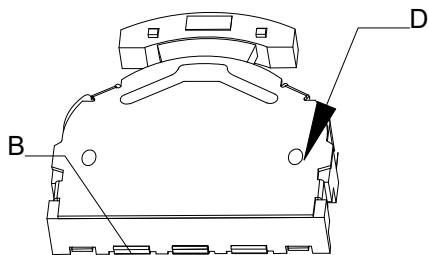
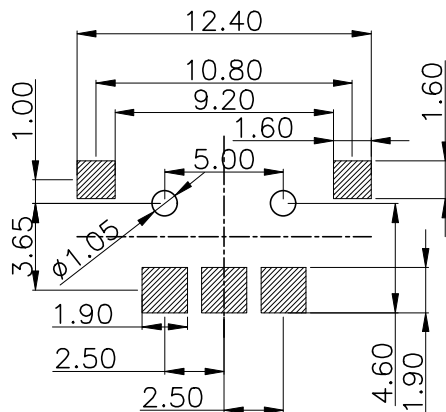
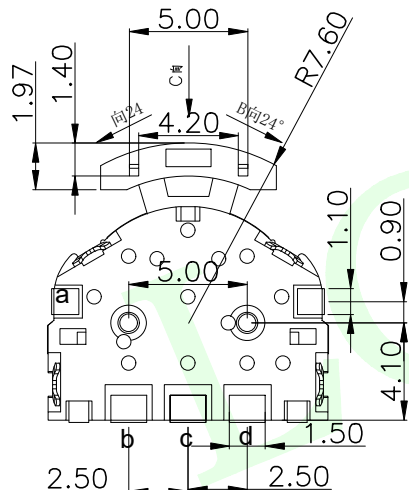
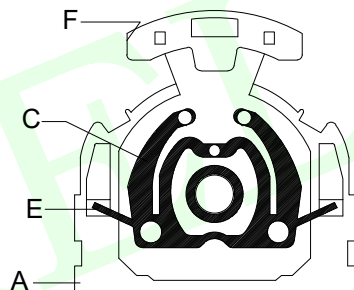
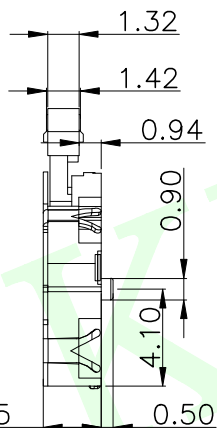
C向1 a与c通



LCK-TG 001B-G1

连晟欣
LCK
产品类别
TG: 波轮开关
TK: 五向开关
产品流水料号识别码

电镀规格
G1: 1U
G3: 3U
(以此类推)



| 项 目 | | 标 准 | | | | | | |
|--|-----------------------------|--|--------------------|-----------|------------|----------|---------------------|--|
| 电气性能 | 额定电流 Rated Current: | 0.1A MAX | | | | | | |
| | 额定电压 Rated voltage: | DC 12V | | | | | | |
| | 接触电阻 Contact resistance: | ≤100mΩ | | | | | | |
| | 绝缘电阻 Insulation Resistance: | ≥100MΩ | | | | | | |
| 机械性能 | 耐压强度 Compressive strength: | AC110V 50Hz/1 min | | | | | | |
| | 操作力度 Operating force: | 2-80±50gf 205±50gf | | | | | | |
| | 机械寿命 Mechanical life: | 5,0000 cycles Min | | | | | | |
| 环境性能 | C向操作行程 Operation Stroke: | 1.0±0.2mm | | | | | | |
| | 温度范围 Temperature Range: | -10°C ~ +60°C | | | | | | |
| F 手柄 | 1 增强尼龙 | / | 黑色 | | | | | |
| E 弹簧 | 1 不锈钢丝 | / | 原色 | | | | | |
| D 盖板 | 1 不锈钢 | / | 原色 | | | | | |
| C 簧片 | 1 覆银铜 | 单边覆银 | 白色 | | | | | |
| B 嵌件 | 1 黄铜 | 整体镀银 | 银白色 | | | | | |
| A 底座 | 1 增强尼龙 | / | 黑色 | | | | | |
| NO. 零件名称 Part Name | QTY | 材料 Material | 镀涂 Plating coating | 颜色 colour | 备注 Remarks | | | |
| MEASURE POINT: | | 联晟欣连接器(深圳)有限公司 Lianshengxin Connector (Shenzhen) Co., Ltd | | | | | | |
| QUADRANT POINT | | | | | | | | |
| TANGENCY POINT | | | | | | | | |
| INTERSECTION POINT | | | | | | | | |
| UNLESS OTHERWISE SPECIFIED, TOLERANCE: | | DESIGN | Andy | DATE | 2014.12.24 | TITLE: | Wheel switch series | |
| X. | ±0.25 | CHECKED | | DATE | | | | |
| X.x | ±0.20 | APPROVED | | DATE | | | | |
| X.xx | ±0.15 | PART NO: LCK-TG001B-G1 | | REV: 04 | SCALE: 1:1 | UNIT: mm | | |
| ANGULAR | ±3° | DRAWING NO: | | SIZE: A4 | SHEET: 1/1 | | | |