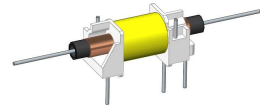


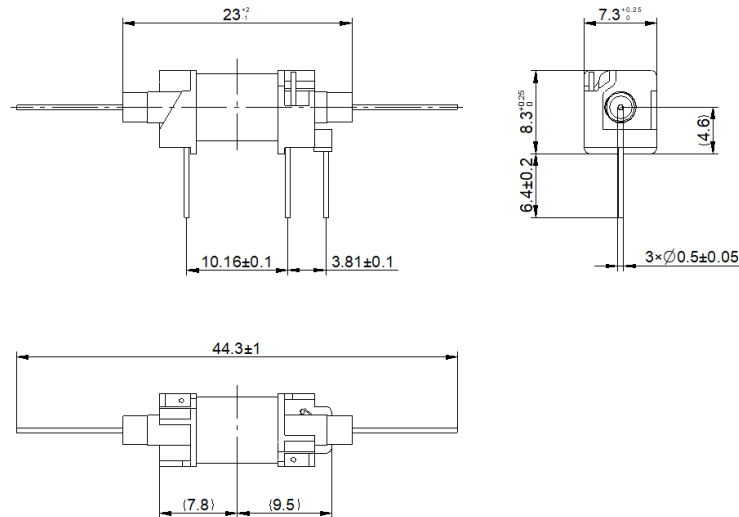
HI-1A05

- High Insulation Reed Relay
- Low Contact Resistance
- Insulation resistance, up to $10^{15}\Omega$
- Excellent Lifetime Characteristics
- Custom Design Available



[Outline Dimension]

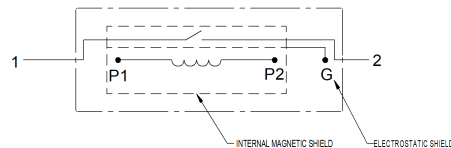
Unit: mm



19

[Pin Layout]

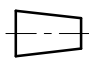

[Top View]



Order Information

HI-1A05

Coil Parameters		Relay Parameters	
1 Nominal coil voltage	5 VDC	1 Min Breakdown Voltage	300 VDC
2 Max Operating voltage	7 VDC	2 Dielectric Strength coil/contact	1000 VDC
3 Max Pull-in voltage	3.2 VDC	3 Insulation Resistance (@100 VDC, 25°C, 40% R. H)	
4 Min Drop-out voltage	0.8 VDC	3.1 Across Open Contact, And Between Contact To	
5 Coil Resistance	300 ohm ($\pm 10\%$)	Coil And Shield	$1.00E+15\text{ohm}$
Contact Parameters		3.2 Coil To Shield	$1.00E+13\text{ohm}$
1 Contact Form	1 Form A	4 Operate Time, incl. Bounce	0.7ms
2 Max Contact Rating	30 W	5 Reset Time	0.2ms
3 Max Switch Voltage	200 VDC	6 Capacitance Across Contacts	0.3pF
4 Max Switch Current	0.5 A	7 Storage Temperature	$-40 \sim +105^\circ\text{C}$
5 Max Carrying Current	1.0 A	8 Operating Temperature	$-40 \sim +85^\circ\text{C}$
6 Min Breakdown Voltage	300 VDC	9 Soldering Temperature	5 sec. max 260°C
7 Max Contact Resistance	150 mohm		

Version: 01	Designed by		TITLE	 
	Checked by		High Insulation Reed Relay	
	Approved by		P/N	Scale: 1:1
	Date	2th, Feb, 2026	HI-1A05	Page: 1/1