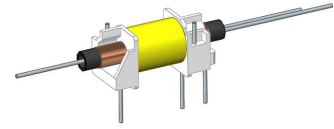


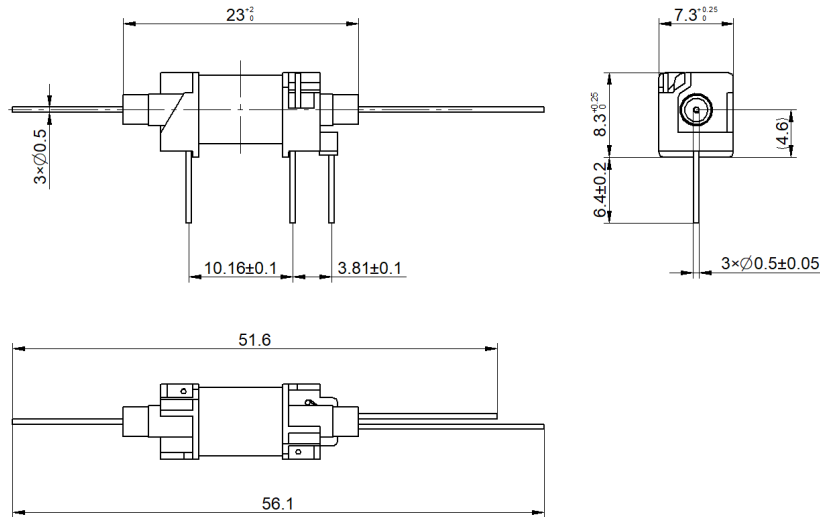
HI-1C05

- High Insulation Reed Relay
- Low Contact Resistance
- Insulation resistance, up to $10^{15}\Omega$
- Excellent Lifetime Characteristics
- Custom Design Available



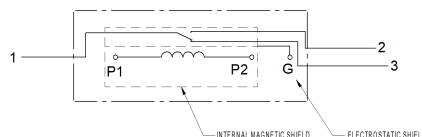
[Outline Dimension]

Unit: mm



[Pin Layout]

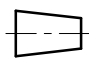

[Top View]



Order Information

HI-1C05

Coil Parameters		Relay Parameters	
1 Nominal coil voltage	5 VDC	1 Min Breakdown Voltage	200 VDC
2 Max Operating voltage	7 VDC	2 Dielectric Strength coil/contact	500 VAC
3 Max Pull-in voltage	3.2 VDC	3 Insulation Resistance (@100 VDC, 25°C, 40% R. H)	
4 Min Drop-out voltage	0.8 VDC	3.1 Contact To Coil	1.00E+15ohm
5 Coil Resistance	300 ohm (±10%)	3.2 Between All Isolated Pins	1.00E+13ohm
Contact Parameters		4 Operate Time, incl. Bounce	1.0ms
1 Contact Form	1 Form C	5 Reset Time, incl. Bounce	1.0ms
2 Max Contact Rating	3 W	6 Capacitance Across Contacts	1.5pF
3 Max Switch Voltage	150 VDC	7 Storage Temperature	-40~+105°C
4 Max Switch Current	0.25 A	8 Operating Temperature	-40~+85°C
5 Max Carrying Current	0.5 A	9 Soldering Temperature	5 sec. max 260°C
6 Min Breakdown Voltage	200 VDC		
7 Max Contact Resistance	150 mohm		

Version: 01	Designed by		TITLE	 
	Checked by		High Insulation Reed Relay	
	Approved by		P/N	Scale: 1:1
	Date	2th, Feb, 2026	HI-1C05	Page: 1/1