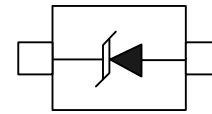


Features

200Watts peak pulse power ($t_p = 8/20\mu s$)
 SOD523 package
 Bidirectional configurations
 Solid-state silicon-avalanche technology
 Low clamping voltage
 Low leakage current
 Low capacitance ($C_j = 75pF$ typ.)
 Protection one data/power line to:
 IEC 61000-4-2 $\pm 30kV$ contact $\pm 30kV$ air
 IEC 61000-4-4 (EFT) 40A (5/50ns)
 IEC 61000-4-5 (Lightning) 11A (8/20 μs)

Applications

Cell Phone Handsets and Accessories
 Microprocessor based equipment
 Personal Digital Assistants (PDA's)
 Notebooks, Desktops, and Servers
 Portable Instrumentation



SOD-523

Absolute Maximum Rating

Rating	Symbol	Value	Units
Peak Pulse Power ($t_p = 8/20\mu s$)	P_{PP}	200	Watts
Peak Pulse Current ($t_p = 8/20\mu s$) (note1)	I_{PP}	11	A
ESD per IEC 61000-4-2 (Air) ESD per IEC 61000-4-2 (Contact)	V_{ESD}	30 30	kV
Lead Soldering Temperature	T_L	260(10seconds)	$^{\circ}C$
Junction Temperature	T_J	-55 to + 125	$^{\circ}C$
Storage Temperature	T_{stg}	-55 to + 125	$^{\circ}C$

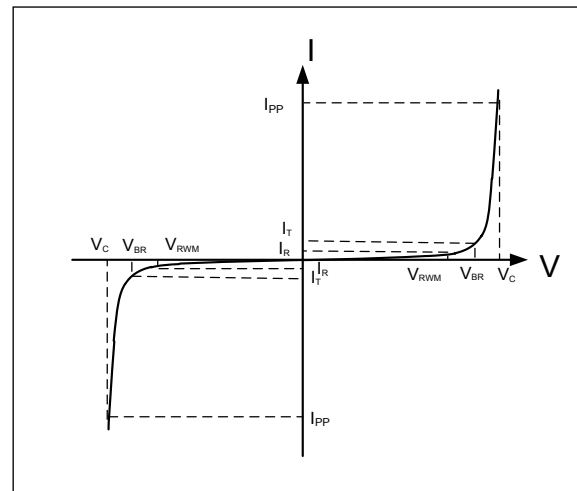
Electrical Characteristics

Parameter	Symbol	Conditions	Min	Typical	Max	Units
Reverse Stand-Off Voltage	V_{RWM}				5.0	V
Reverse Breakdown Voltage	V_{BR}	$I_T=1mA$	6.0			V
Reverse Leakage Current	I_R	$V_{RWM}=5V, T=25^{\circ}C$			1.0	μA
Peak Pulse Current	I_{PP}	$t_p=8/20\mu s$			11	A
Clamping Voltage	V_C	$I_{PP}=11A, t_p=8/20\mu s$			20	V
Junction Capacitance	C_j	$V_R=0V, f=1MHz$		75		pF

Electronics Parameter

Symbol	Parameter
I_{PP}	Maximum Reverse Peak Pulse Current
V_C	Clamping Voltage @ I_{PP}
V_{RWM}	Working Peak Reverse Voltage
I_R	Maximum Reverse Leakage Current @ V_{RWM}
V_{BR}	Breakdown Voltage @ I_R
I_T	Test Current

Note: 8/20 μs pulse waveform.



RATING AND CHARACTERISTIC CURVES

Figure 1: Peak Pulse Power vs. Pulse Time

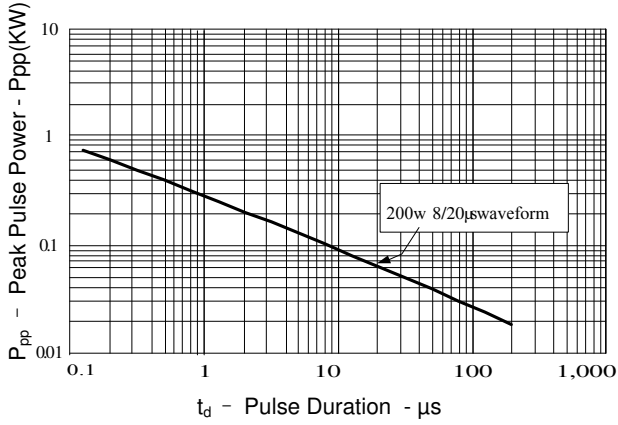


Figure 2: Power Derating Curve

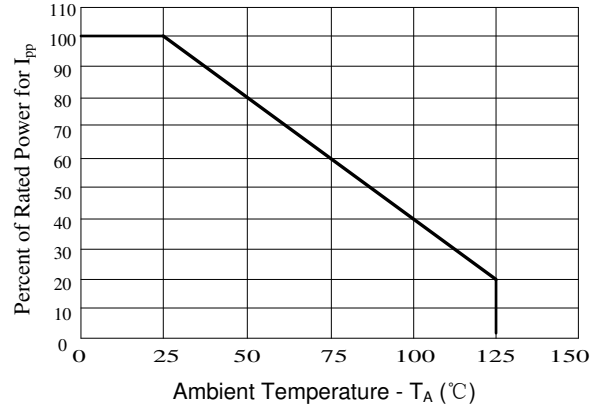


Figure3: Pulse Waveform

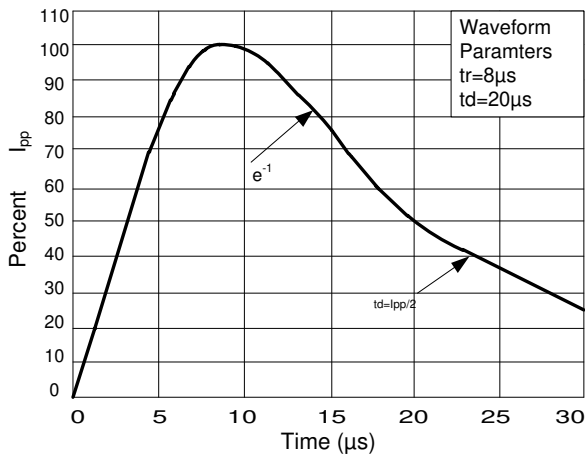
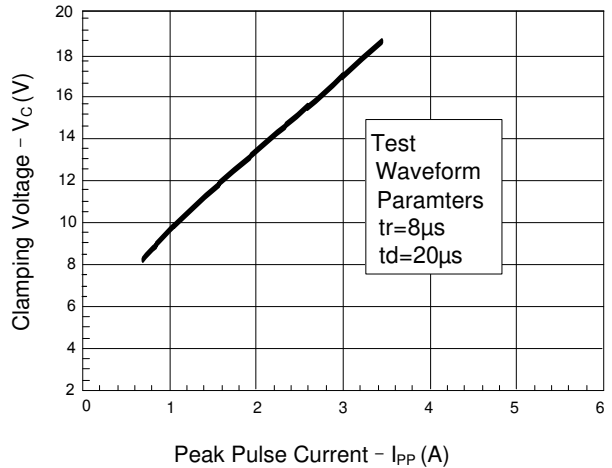


Figure 4: Clamping Voltage vs. I_pp



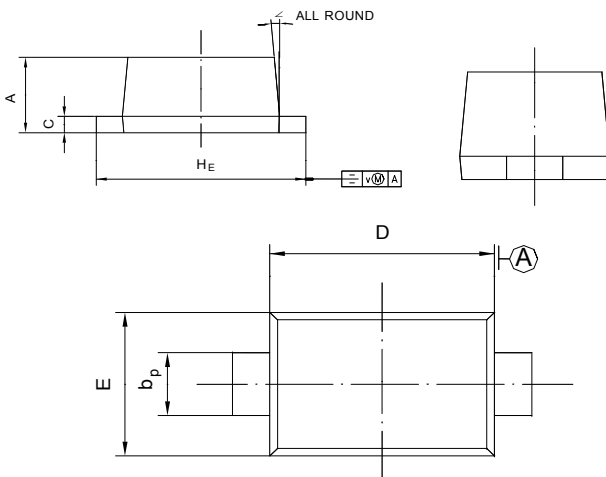
Soldering parameters

Reflow Condition		Pb-Free assembly (see as below)
Pre Heat	-Temperature Min ($T_{s(min)}$)	+150°C
	-Temperature Max($T_{s(max)}$)	+200°C
	-Time (Min to Max) (ts)	60-180 secs.
Average ramp up rate (Liquid us Temp (T_L) to peak)		3°C/sec. Max
$T_{s(max)}$ to T_L - Ramp-up Rate		3°C/sec. Max
Reflow	-Temperature(T_L)(Liquid us)	+217°C
	-Temperature(t_L)	60-150 secs.
Peak Temp (T_P)		+260(+0/-5)°C
Time within 5°C of actual Peak Temp (t_p)		30 secs. Max
Ramp-down Rate		6°C/sec. Max
Time 25°C to Peak Temp (T_P)		8 min. Max
Do not exceed		+260°C

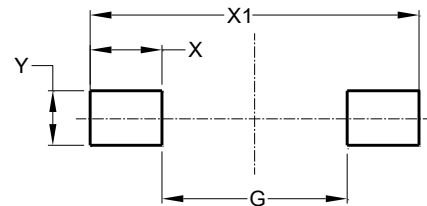


Package Dimensions & Suggested Pad Layout

SOD523



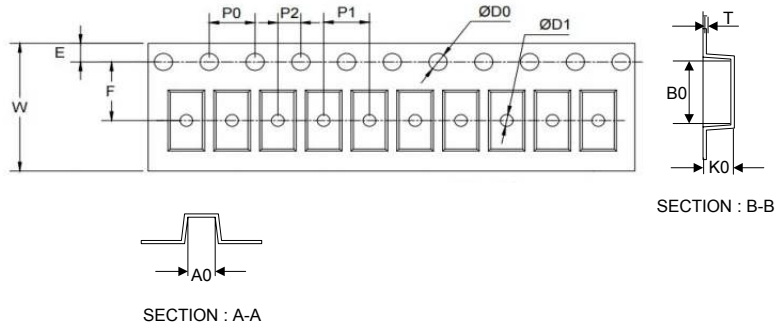
UNIT	A	bp	C	D	E	HE	V	∠
mm	0.70 0.50	0.40 0.20	0.14 0.05	1.30 1.10	0.90 0.75	1.70 1.50	0.1	5°



Dimensions	Value (in mm)
G	0.85
X	0.70
X1	2.25
Y	0.80

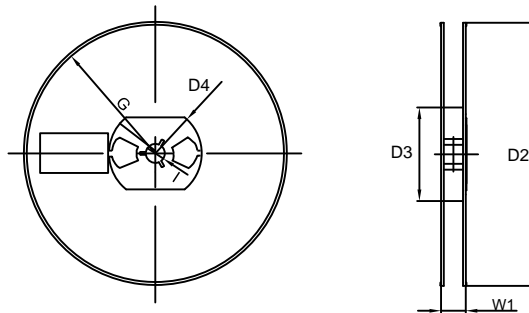
Tape & reel specification

Tape



Symbol	Dimension (mm)
P0	4.00±0.20
P1	2.00±0.20
P2	2.00±0.20
D0	1.55±0.20
D1	0.50±0.20
E	1.55±0.25
F	3.60±0.20
W	8.00±0.20
A0	1.30±0.20
B0	2.35±0.20
K0	0.95±0.20
T	0.20±0.20
D2	177.0±5.0
D3	55Min.
D4	R24.6±2.0
G	R82.0±2.0
I	13.0±2.0
W1	10.20±3.0

7" Reel



Quantity: 3000PCS