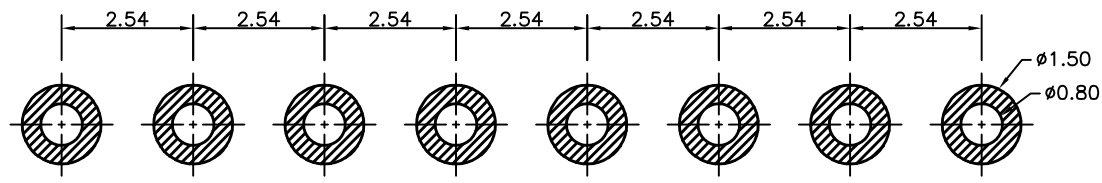
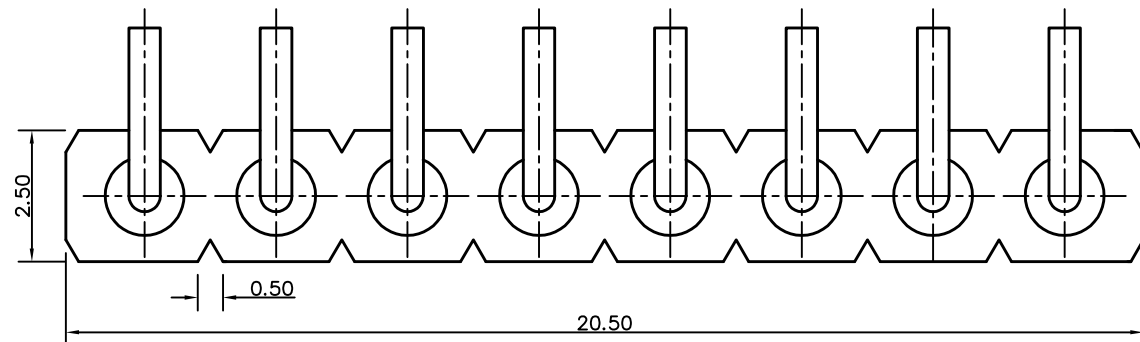
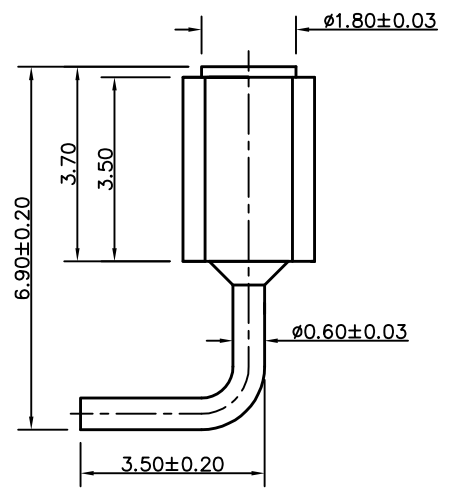
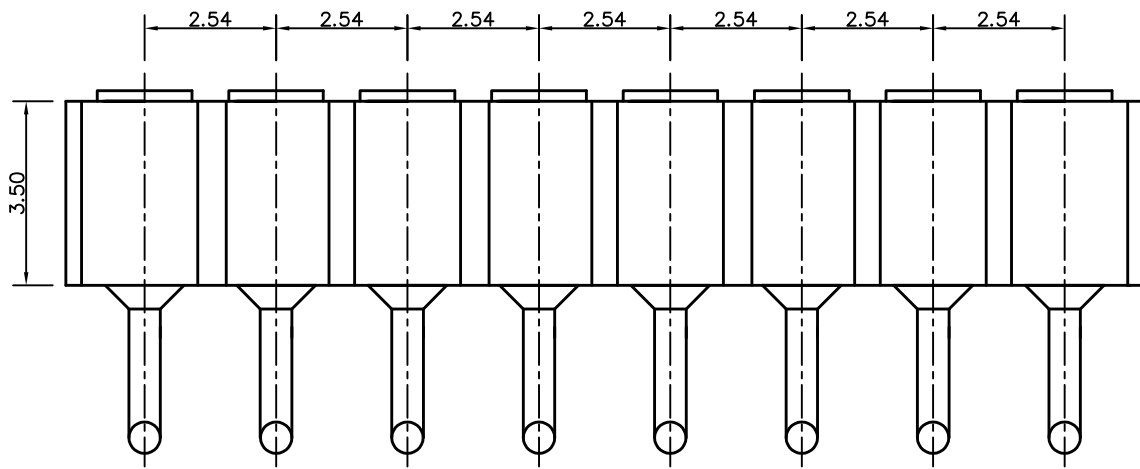


客户图

NO.	ECN NO.	DESCRIPTION	DATE



RECOMMENDED PCB LAYOUT

- Note:
- Material (材料):
Housing: PA46+30%GF (胶芯: PA46)
Pin: Brass C3602 (针体: 黄铜 C3602)
 - Plating (电镀):
Pin: 3u' Au over 50~80u' Ni (针体: 镀金3u', 镍底50~80u'.)
 - Electrical (电气特性):
Rated Current & Voltage: DC 12V;1A (额定电压&电流: 直流12V,1A)
Contact Resistance: 50 mohm Max. 接触电阻: 最大50毫欧
Insulation Resistance: 1,000MΩ minimum. (绝缘电阻: 1,000MΩ以上)
Dielectric Withstand Voltage: 500VAC/minute. (抗击电压: 500VAC/minute)
 - WorkTemperature (工作环境):
Withstanding High Temperature: 280℃
Operational Temperature: -40℃~ +85℃

深圳市鑫扬泽电子有限公司



SCALE:	N/A	UNIT	mm
SHEET:	1 of 1	PROJECTION	
DATE:	2017.02.15	VER.	D.0

THE UNMARKED TOLERANCE ARE AS BELOW :			
LENGTH		ANGLE	
X.XX	±0.05mm	X.XX	±0.5°
X.X	±0.10mm	X.X	±1.0°
X.	±0.20mm	X.	±2.0°

DESIGNED BY:		DWG. NO.	YZ157415069B-08025-01
CHECKED BY:		TITLE:	Pogo pin 连接器
APPROVED BY:			