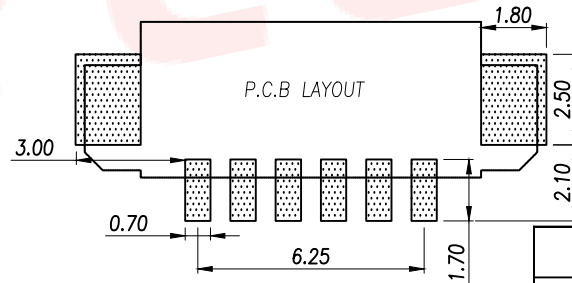
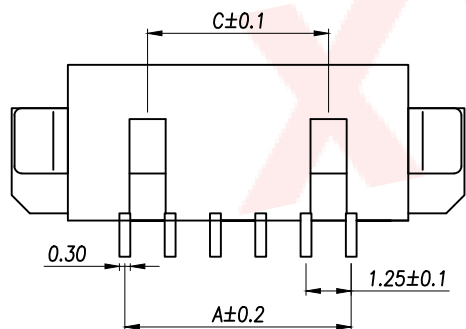
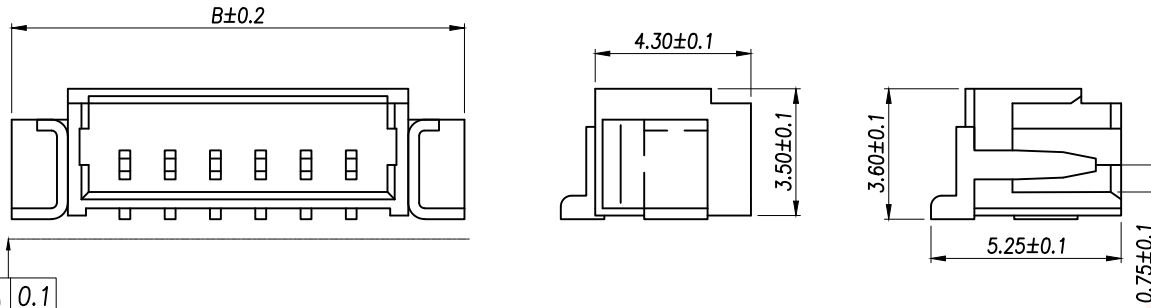
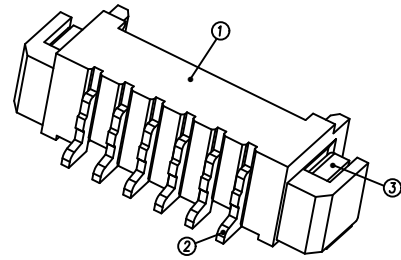


REV.	Q'TY	ECN. NO.	APR.	DATE



Part No	Pin	A	B	C
XY-1.25-2PWT-BD	2	1.25	7.50	
XY-1.25-3PWT-BD	3	2.50	8.75	
XY-1.25-4PWT-BD	4	3.75	10.00	2.50
XY-1.25-5PWT-BD	5	5.00	11.25	3.75
XY-1.25-6PWT-BD	6	6.25	12.50	5.00
XY-1.25-7PWT-BD	7	7.50	13.75	6.25
XY-1.25-8PWT-BD	8	8.75	15.00	7.50
XY-1.25-9PWT-BD	9	10.00	16.25	8.75
XY-1.25-10PWT-BD	10	11.25	17.50	10.00
XY-1.25-11PWT-BD	11	12.50	18.75	11.25
XY-1.25-12PWT-BD	12	13.75	20.00	12.50
XY-1.25-13PWT-BD	13	15.00	21.25	13.75
XY-1.25-14PWT-BD	14	16.25	22.50	15.00
XY-1.25-15PWT-BD	15	17.50	23.75	16.25
XY-1.25-16PWT-BD	16	18.75	25.00	17.50

NOTES:

- 1.BASE: LCP
- 2.PIN: Brass
- 3.Solder Tab: Brass

SPECIFICATIONS:

- 1.Spacing: 1.25
- 2.Voltage Rating: 125V AC DC
- 3.Current Rating: 1A AC DC
- 4.Insulation Resistance: 100MΩ Min
- 5.Contact Resistance: 20mΩ Max
- 6.Withstanding voltage: 500V AC 1/Minute
- 7.Temperatuer Range: -25℃ ~+ 85℃

DIMENSION IN mm		厦门市辛译精密电子有限公司 Xiamen XinYi Xyecomm Electronics Co.,Ltd		
TOLERANCE UNLESS OTHERWISE SPECIFIED				
.X±0.2	X.*± 5°	APR. Alex	TITLE: WAFER 1.25 贴片	
.XX±0.1	.X.*± 3°	CHK. Jack	DWG NO. XY-1.25-NPWT-BD	
.XXX±0.05	.XX.*± 1°	DRA. Can	PROJ.  CUSTOMER DRAWING	
		SIZE A4	SCALE 1:1	SHEET 1/1
		REV. A		