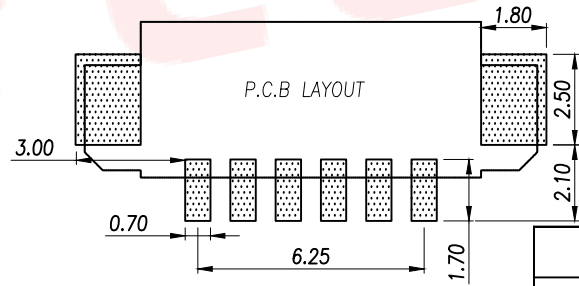
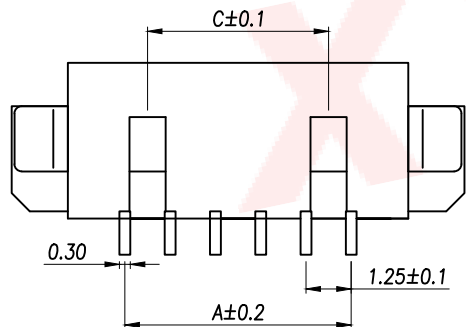
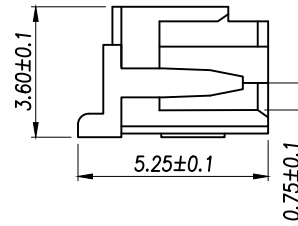
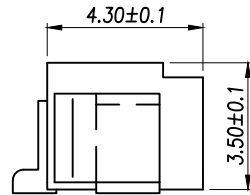
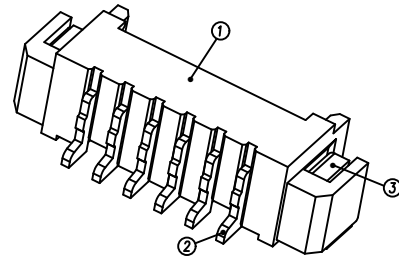


REV.	Q'TY	ECN. NO.	APR.	DATE



Part No	Pin	A	B	C
XY-1.25-2PWB-BD	2	1.25	7.50	
XY-1.25-3PWB-BD	3	2.50	8.75	
XY-1.25-4PWB-BD	4	3.75	10.00	2.50
XY-1.25-5PWB-BD	5	5.00	11.25	3.75
XY-1.25-6PWB-BD	6	6.25	12.50	5.00
XY-1.25-7PWB-BD	7	7.50	13.75	6.25
XY-1.25-8PWB-BD	8	8.75	15.00	7.50
XY-1.25-9PWB-BD	9	10.00	16.25	8.75
XY-1.25-10PWB-BD	10	11.25	17.50	10.00
XY-1.25-11PWB-BD	11	12.50	18.75	11.25
XY-1.25-12PWB-BD	12	13.75	20.00	12.50
XY-1.25-13PWB-BD	13	15.00	21.25	13.75
XY-1.25-14PWB-BD	14	16.25	22.50	15.00
XY-1.25-15PWB-BD	15	17.50	23.75	16.25
XY-1.25-16PWB-BD	16	18.75	25.00	17.50

NOTES:

- 1.BASE: LCP
- 2.PIN: Brass
- 3.Solder Tab: Brass

SPECIFICATIONS:

- 1.Spacing: 1.25
- 2.Voltage Rating: 125V AC DC
- 3.Current Rating: 1A AC DC
- 4.Insulation Resistance: 100MΩ Min
- 5.Contact Resistance: 20mΩ Max
- 6.Withstanding voltage: 500V AC 1/Minute
- 7.Temperatuer Range: -25℃ ~+ 85℃

DIMENSION IN mm		TOLERANCE UNLESS OTHERWISE SPECIFIED		APR. Alex		TITLE: WAFER 1.25 贴片	
.X±0.2	X.*± 5°	CHK.	Jack	DWG NO. XY-1.25-NPWB-BD		CUSTOMER DRAWING	
.XX±0.1	.X.*± 3°	DRA.	Can	PROJ.	SCALE 1:1 SHEET 1/1 REV. A		
.XXX±0.05	.XX.*± 1°			SIZE A4	F-RD-18A		

厦门市辛译精密电子有限公司
Xiamen XinYi Xyecomm Electronics Co.,Ltd