



灵星芯微 精密检测

深圳市灵星芯微电子科技有限公司

Shenzhen Lingxing Microelectronics Technology Co., Ltd.

Tab: 835-12-B4

Number: DS1307-AX-QT-E008EN

DS1307 (LX)

Serial, I²C Real-Time Clock Chip

Product Specification

Specification Revision History:

Version	Date	Description
2023-04-A1	2023-04	New



灵星芯微 芯片经营

Contents

1、 General Description.....	3
2、 Block Diagram And Pin Description	5
2.1、 Block Diagram	5
2.2、 Pin Configurations.....	5
2.3、 Pin Description	5
3、 Electrical Parameter	6
3.1、 Absolute Maximum Ratings.....	6
3.2、 Recommended Operating Conditions	6
3.3、 Electrical Characteristics	6
3.3.1、 DC Characteristics	6
3.3.2、 AC Characteristics	7
4、 Communication Timing Diagram	7
5、 Function Description	7
5.1、 Detailed Description.....	7
5.2、 Oscillator Circuit	7
5.3、 Register Description.....	8
5.4、 Clock And Calendar	8
5.5、 Control Register	8
5.6、 Introduction of Communication Mode.....	9
6、 Typical Application Circuit	12
7、 Package Information	13
7.1、 DIP8	13
7.2、 SOP8	14
8、 Statements And Notes	15
8.1、 The name and content of Hazardous substances or Elements in the product	15
8.2、 Notes	15



灵星芯微 精密经营

1、General Description

DS1307 is a low-power real-time clock (RTC). Full binary-coded decimal (BCD) clock/calendar plus 56 bytes of SRAM. Address and data are transferred serially through an 2-line bidirectional bus. The clock/calendar provides the information of seconds, minutes, hours, day, date, month, and year . The end of the month date is automatically adjusted for months with fewer than 31 days, including corrections for leap year. The clock operates in either the 24-hour or 12-hour format with AM/PM indicator. DS1307 has a built-in power-sense circuit that detects power failures and automatically switches to the backup supply. Timekeeping operation continues while the part operates from the backup supply.

Features:

- Clock counting, leap year adjustment, the number of years can reach 2100 years.
- Built-in 56-byte SRAM register
- I²C interface
- Programmable output square wave signal
- Automatic detection of power failure and power switching
- Packaging information:DIP8/SOP8



Ordering Information:

Tube packing specifications:

Part number	Packaging form	Marking code	Tube quantity	Boxed tube quantity	Boxed quantity	Notes
DS1307ZN(LX)	SOP8	DS1307ZN	100 PCS/tube	100 tube/box	10000 PCS/box	Dimensions of plastic enclosure: 4.9mm×3.9mm Pin spacing: 1.27mm
DS1307N(LX)	DIP8	DS1307N	50 PCS/tube	40 tube/box	2000 PCS/box	Dimensions of plastic enclosure: 9.2mm×6.4mm Pin spacing: 2.54mm

Reel packing specifications:

Part number	Packaging form	Marking code	Reel quantity	Boxed reel quantity	Notes
DS1307ZN(LX)	SOP8(1)	DS1307ZN	2500 PCS/reel	5000 PCS/box	Dimensions of plastic enclosure: 4.9mm×3.9mm Pin spacing:1.27mm
DS1307ZN(LX)	SOP8(2)	DS1307ZN	4000 PCS/reel	8000 PCS/box	Dimensions of plastic enclosure: 4.9mm×3.9mm Pin spacing:1.27mm

Note: If the physical information is inconsistent with the ordering information, please refer to the actual product.



3、Electrical Parameter

3.1、Absolute Maximum Ratings

($T_{amb}=25^{\circ}\text{C}$, unless otherwise specified)

Characteristic	Symbol	Conditions	Value	Unit	
input voltage	V_I	all pins except GND	-0.5 to 7.0	V	
operating temperature	T_{amb}	-	-40 to +85	$^{\circ}\text{C}$	
storage temperature	T_{stg}	-	-65 to 125	$^{\circ}\text{C}$	
lead temperature	T_L	10s	DIP	250	$^{\circ}\text{C}$
			SOP	260	$^{\circ}\text{C}$

3.2、Recommended Operating Conditions

($T_{amb}=-40^{\circ}\text{C}$ to $+85^{\circ}\text{C}$, GND=0V, unless otherwise specified)

Characteristic	Symbol	Min.	Typ.	Max.	Unit
supply voltage	V_{CC}	4.5	5.0	5.5	V
input high-level voltage	V_{IH}	2.4	-	$V_{CC}+0.3$	V
input low-level voltage	V_{IL}	-0.3	-	+0.8	V
backup power voltage	V_{BAT}	2.0	3.0	3.5	V

3.3、Electrical Characteristics

3.3.1、DC Characteristics

($T_{amb}=-40^{\circ}\text{C}$ to $+85^{\circ}\text{C}$, GND=0V, $V_{CC}=4.5$ to 5.5V , $V_{BAT}=0\text{V}$, unless otherwise specified)

Parameter	Symbol	Conditions	Min.	Typ.	Max.	Unit
active supply current	I_{CCA}	$V_{CC}=5\text{V}$, $f_{SCL}=100\text{KHz}$	-	-	1.5	mA
standby curreny	I_{CCS}	$V_{CC}=5\text{V}$, $SDA=SCL=5\text{V}$	-	-	200	μA
V_{BAT} current	I_{BAT}	$V_{CC}=0\text{V}$, $V_{BAT}=3\text{V}$, SQW OUT OFF	-	300	1000	nA
		$V_{CC}=0\text{V}$, $V_{BAT}=3\text{V}$, SQW OUT ON	-	480	1000	nA
V_{BAT} data-retention current	I_{BATDR}	$V_{CC}=0\text{V}$, $V_{BAT}=3\text{V}$	-	100	-	nA
V_{BAT} leakage current	I_{BATLKG}	$V_{CC}=5\text{V}$, $V_{BAT}=3\text{V}$	-	100	-	nA
input leakage current	I_{LI}	SCL, SDA, $V_{IN}=V_{CC}$ or GND	-1	-	1	μA
output high resistance leakage current	I_{LO}	SDA, SQW/OUT	-1	-	1	μA
output low-level voltage	V_{OL}	SQW/OUT, $I_{OL}=5\text{mA}$	-	-	0.4	V
power-fail voltage	V_{PF}	$V_{BAT}=3\text{V}$	$1.216 \times V_{BAT}$	$1.25 \times V_{BAT}$	$1.284 \times V_{BAT}$	V

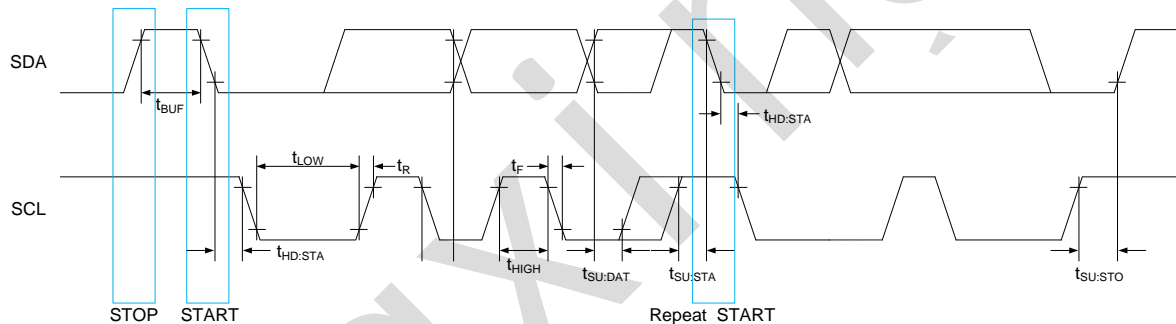


3.3.2、AC Characteristics

($T_{amb} = -40^{\circ}\text{C}$ to $+85^{\circ}\text{C}$, $GND = 0\text{V}$, $V_{CC} = 4.5$ to 5.5V , $V_{BAT} = 0\text{V}$, unless otherwise specified)

Parameter	Symbol	Conditions	Min.	Typ.	Max.	Unit
SCL clock frequency	f_{SCL}	-	0	-	100	KHz
bus free time between a STOP and START condition	t_{BUF}	-	4.7	-	-	us
hold time (repeated) START condition	$t_{HD:STA}$	-	4.0	-	-	us
LOW period of the SCL clock	t_{LOW}	-	4.7	-	-	us
HIGH period of the SCL clock	t_{HIGH}	-	4.0	-	-	us
setup time for a repeated START condition	$t_{SU:STA}$	-	4.7	-	-	us
data hold time	$t_{HD:DAT}$	-	0	-	-	us
data setup time	$t_{SU:DAT}$	-	250	-	-	ns
rise time of both SDA and SCL signals	t_R	-	-	-	1000	ns
fall time of both SDA and SCL signals	t_F	-	-	-	300	ns
setup time for STOP condition	$t_{SU:STO}$	-	4.7	-	-	us

4、Communication Timing Diagram



5、Function Description

5.1、Detailed Description

DS1307 is a low-power clock/calendar with 56 bytes of SRAM. The clock/calendar provides seconds, minutes, hours, day, date, month, and year information. The date at the end of the month and leap year is automatically adjusted. DS1307 has built-in power detection circuit, which can detect power failure or automatically switch to standby power supply. When V_{CC} falls below $1.25 \times V_{BAT}$, the device terminates and resets the device address counter to prevent erroneous data from being written to the device. When V_{CC} falls below V_{BAT} , the device switches into a battery-backup mode. The device switches from battery to V_{CC} when V_{CC} is greater than $V_{BAT} + 0.2\text{V}$ and the communication is valid when V_{CC} is greater than $1.25 \times V_{BAT}$.

5.2、Oscillator Circuit

Characteristic	Symbol	Min.	Typ.	Max.	Unit
nominal frequency	f_o	-	32.768	-	KHz
serial resistance	ESR	-	-	45	K Ω
load capacitance	C_L	-	12.5	-	pF



5.3、Register Description

The following table shows the address map for the DS1307 RTC and SRAM registers. The RTC registers are located in address locations 00H to 07H. The SRAM registers are located in address locations 08H to 3FH. During a multibyte access, when the address pointer reaches 3FH, it will automatically jump to 00H.

Address	BIT7	BIT6	BIT5	BIT4	BIT3	BIT2	BIT1	BIT0	Function	Range
00H	CH	10 Seconds			Seconds				Seconds	00-59
01H	0	10 Minutes			Minutes				Minutes	00-59
02H	0	12	PM/AM	10 Hour	Hours			hours	1-12+AM/PM	
		24	10 Hour						0-23	
03H	0	0	0	0	Day			Day	01-07	
04H	0	0	10 Date		Date			Date	01-31	
05H	0	0	0	10 Month	Month			Month	01-12	
06H	10 Year				Year			Year	00-99	
07H	OUT	0	0	SQWE	0	0	RS1	RS0	Control	-
08H-3FH	-								RAM 56×8	00H-FFH

Note: When power on, the status of RTC and RAM registers is uncertain, and initialization configuration is required.

5.4、Clock And Calendar

The time and calendar information is obtained by reading the appropriate register bytes. The time and calendar are set or initialized by writing the appropriate register bytes. The contents of the time and calendar registers are in the BCD format. The day-of-week register increments at midnight. The clock register adopts BCD format, BIT 7 of second register is the clock halt (CH) bit. When CH=1, the oscillator is disabled. When CH=0, the oscillator is enabled. When power-on, CH needs to be set to “0” because the state of the register is undefined.

Bit 6 of the hour register is defined as the 12-hour or 24-hour mode selection bit. When BIT6=1, the 12-hour mode is selected. In the 12-hour mode, BIT5 is the AM/PM bit and the logic high is PM when BIT5=1. In the 24-hour mode, the fifth bit is the second 10-hour bit (20 to 23 hours). The hours value must be re-entered when the 12/24-hour mode bit is changed.

The week register is incremented at midnight, and the value of the week is defined by the user(i.e., if 1 equals Sunday, then 2 equals Monday, and so on).

5.5、Control Register

DS1307 control register is used to control the operation of SQW/OUT pin.

BIT7	BIT6	BIT5	BIT4	BIT3	BIT2	BIT1	BIT0
OUT	0	0	SQWE	0	0	RS1	RS0

Bit7: Output Control (OUT). When SQWE=0, BIT7 controls the output level state of SQW/OUT.

Bit4: Square-Wave Enable (SQWE). When SQWE=1, SQW/OUT outputs a square wave. The output frequency is selected by RS1 and RS0.

Bits 1 and 0: Rate Select (RS1, RS0). When the square wave output is enabled, these two bits control the square wave frequency of the output.



The truth table of the control register is as follows:

SQWE	OUT	RS1	RS0	SQW/OUT Output
0	0	X	X	0
0	1	X	X	0
1	X	0	0	1Hz
1	X	0	1	4.096KHz
1	X	1	0	8.192KHz
1	X	1	1	32.768KHz

5.6、Introduction of Communication Mode

The DS1307 supports the I²C protocol. The bus must be controlled by a master device that generates the serial clock (SCL), controls the bus access, and generates the START and STOP conditions. The DS1307 operates as a slave on the I²C bus.

The following points shall be paid attention to during I²C communication: 1. Data transfer can be initiated only when the bus is not busy. 2. During data transfer, the data line must remain stable as long as the clock line is HIGH. Changes in the data line while the clock line is HIGH will be interpreted as control signals.

Accordingly, the following bus conditions have been defined:

A. Bus not busy: Both data and clock lines remain HIGH.

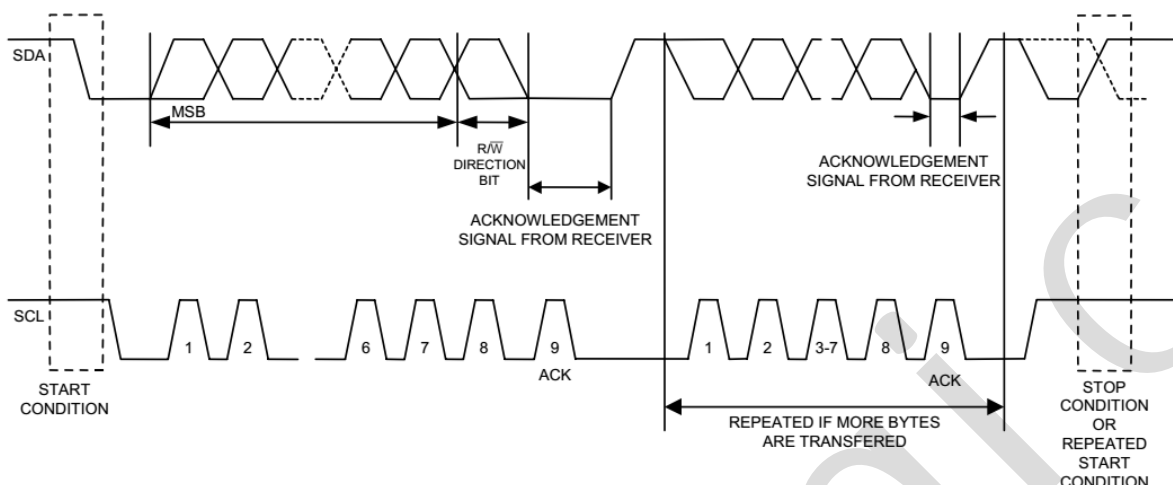
B. START data transfer: The data line changes from HIGH to LOW when the clock line is HIGH.

C. STOP data transfer: The data line changes from LOW to HIGH, when the clock line is HIGH.

D. Data valid: After a START condition, the data line is stable for the duration of the HIGH period of the clock signal. The data on the line must be changed during the LOW period of the clock signal.

Each data transfer is initiated with a START condition and terminated with a STOP condition. The number of data bytes transferred between START and STOP conditions is not limited, and is determined by the master device. The information is transferred byte-wise and each receiver acknowledges with a ninth bit. operates in the standard mode (100kHz) only.

E. Acknowledge: When Each receiving device is addressed, it is obliged to generate an acknowledge after thereception of each byte. The master device must generate an extra clock pulse which is associated with this acknowledge bit. A device that acknowledges must pull down the SDA line during the acknowledge clock pulse and the SDA line keeps LOW during the HIGH period of the clock pulse. A master signal issues an end signal to the slave by not generating an acknowledgement on the last byte that has been clocked out of the slave. In this case, the slave must leave the data line HIGH to enable the master to generate the STOP condition.



The above figure details how data is transferred on the I²C bus. Depending upon the state of the R/W bit, two types of data transfer are possible:

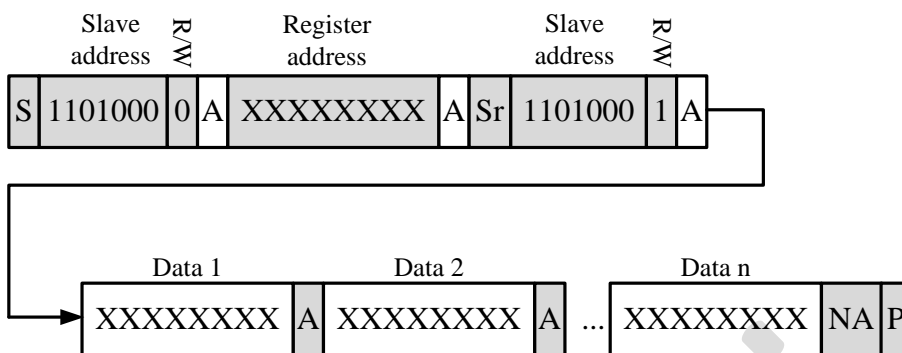
- (1) **Data transfer from a master transmitter to a slave receiver.** The first byte transmitted by the master is the slave address. Next follows a number of data bytes. The slave returns an acknowledge bit after each received byte. Data is transferred with the most significant bit (MSB) first.
- (2) **Data transfer from a slave transmitter to a master receiver.** The first byte (the slave address) is transmitted by the master. The slave then returns an acknowledge bit. This is followed by the slave transmitting a number of data bytes. The master returns an acknowledge bit after all received bytes other than the last byte. At the end of the last received byte, a “not acknowledge” is returned. A transfer is ended with a STOP condition or with a repeated START condition. Since a repeated START condition is also the beginning of the next serial transfer, the bus will not be released. Data is transferred with the most significant bit (MSB) first.

The DS1307 can operate in the following two modes:

- (1) **Slave Receiver Mode (Write Mode):** Serial data and clock are received through SDA and SCL. After each byte is received an acknowledge bit is transmitted. START and STOP conditions are recognized as the beginning and end of a serial transfer. Hardware performs address recognition after reception of the slave address and direction bit. The slave address byte is the first byte received after the master generates the START condition. The slave address byte contains the 7-bit DS1307 address, which is 1101000, followed by the direction bit (R/W). After the DS1307 acknowledges the slave address + write bit, the master transmits a one-byte address to the DS1307. This sets the register pointer on the DS1307, then DS1307 acknowledges the transfer. The master can then transmit zero or more bytes of data, then DS1307 acknowledges each byte received. The register pointer automatically increments after each data byte are written. The master will generate a STOP condition to terminate the data write.



Data Read (Write Pointer, Then Read)—Slave Receive and Transmit



S:Start

Sr:Repeated Start

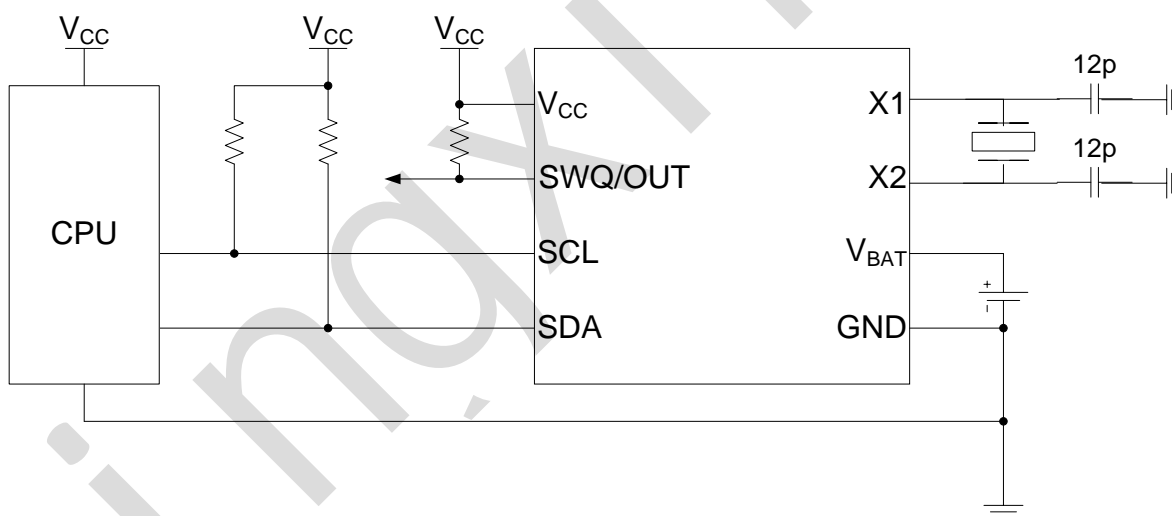
Master to slave

NA:Not acknowledge

A:Acknowledge(ACK) P:Stop

Slave to master

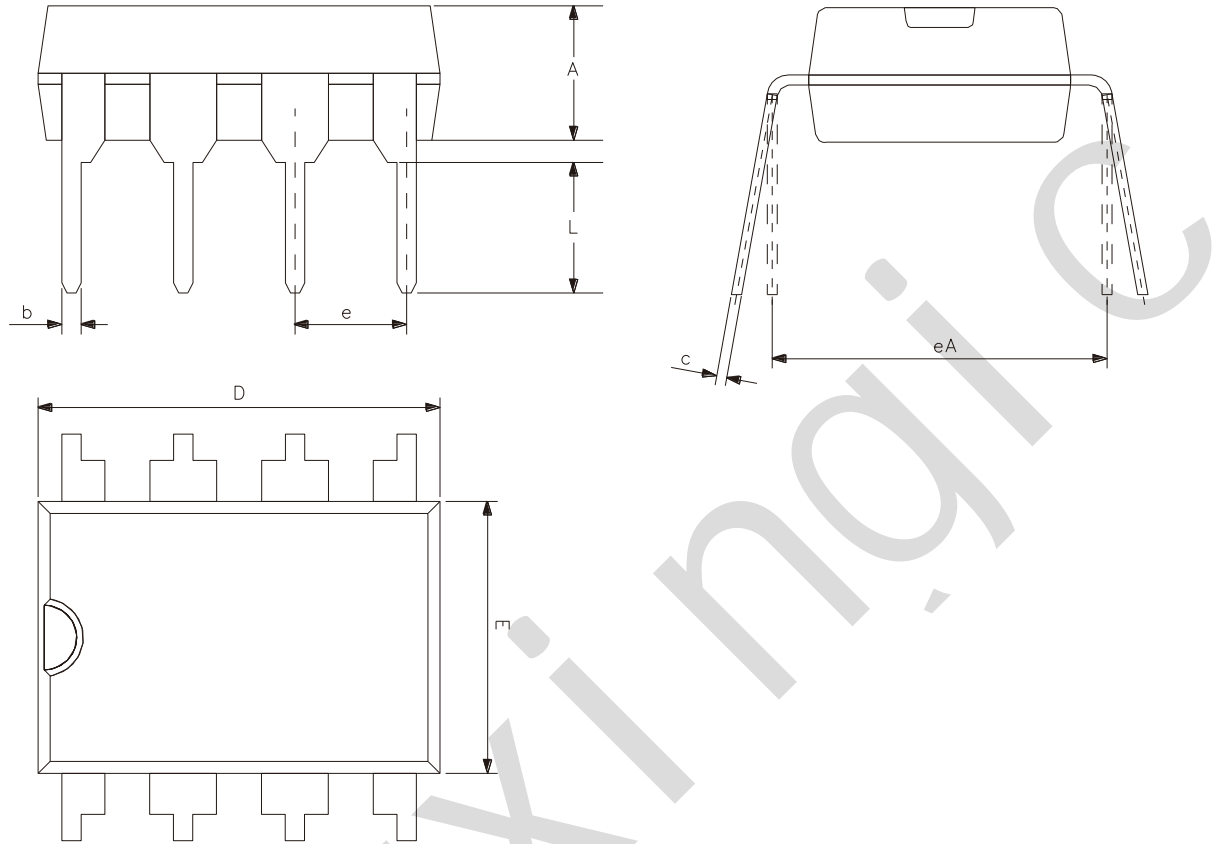
6、Typical Application Circuit





7、Package Information

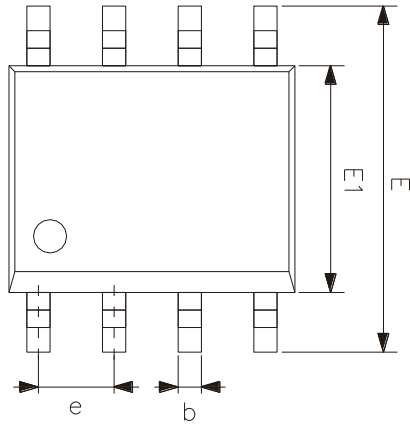
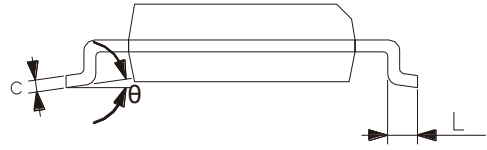
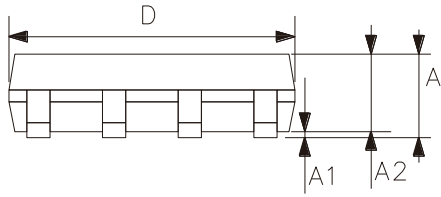
7.1、DIP8



Symbol	Dimensions (mm)	
	Min.	Max.
A	3.00	3.60
b	0.36	0.56
c	0.20	0.36
D	9.00	9.45
E	6.15	6.60
e	2.54	
eA	7.62	9.30
L	3.00	-



7.2、SOP8



Symbol	Dimensions (mm)	
	Min.	Max.
A	1.35	1.80
A1	0.05	0.25
A2	1.25	1.55
D	4.70	5.10
E	5.80	6.30
E1	3.70	4.10
b	0.306	0.51
c	0.19	0.25
e	1.27	
L	0.40	0.89
θ	0°	8°



8、 Statements And Notes

8.1、 The name and content of Hazardous substances or Elements in the product

Part name	Hazardous substances or Elements									
	Lead and lead compounds	Mercury and mercury compounds	Cadmium and cadmium compounds	Hexavalent chromium compounds	Polybrominated biphenyls	Polybrominated biphenyl ethers	Dibutyl phthalate	Butylbenzyl phthalate	Di-2-ethylhexyl phthalate	Diisobutyl phthalate
Lead frame	○	○	○	○	○	○	○	○	○	○
Plastic resin	○	○	○	○	○	○	○	○	○	○
Chip	○	○	○	○	○	○	○	○	○	○
The lead	○	○	○	○	○	○	○	○	○	○
Plastic sheet installed	○	○	○	○	○	○	○	○	○	○
explanation	○: Indicates that the content of hazardous substances or elements in the detection limit of the following the SJ/T11363-2006 standard. ×: Indicates that the content of hazardous substances or elements exceeding the SJ/T11363-2006 Standard limit requirements.									

8.2、 Notes

We Recommend you to read this chapter carefully before using this product.

The information in this chapter is provided for reference only and Lingxing disclaims any express or implied warranties, including but not limited to applicability, special application or non-infringement of third party rights.

This product is not suitable for critical equipment such as life-saving, life-sustaining or safety equipment. It is also not suitable for applications that may result in personal injury, death, or serious property or environmental damage due to product malfunction or failure. Lingxing will not be liable for any damages incurred by the customers at their own risk for such applications.

The customer is responsible for conducting all necessary tests Lingxing's application to avoid failure in the application or the application of the customer's third party users. Lingxing does not accept any liability.

The Company reserves the right to change or improve the information published in this chapter at any time. The information in this chapter are subject to change without notice. We recommend the customer to consult our sales staff before purchasing.

Please obtain related materials form Lingxing's regular channels and we are not responsible for its content if it is provided by sources other than our company.

In case of any conflict between the Chinese and English version, the version is subject to the Chinese one.