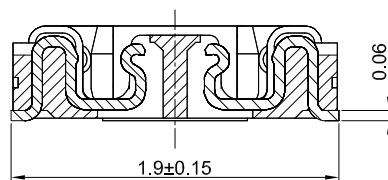
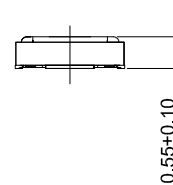
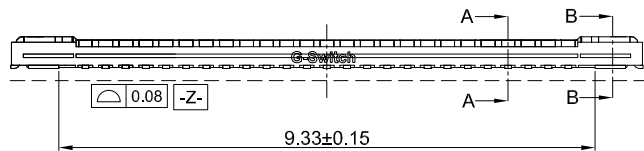


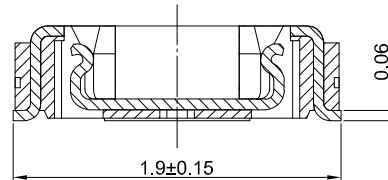
GT-B0354 F S V 06 -XX B 12 01

**G-Switch**  
**Series No**  
**F-Female**  
**Termpoint**  
 S-SMT  
**ANGLE**  
 V-180°

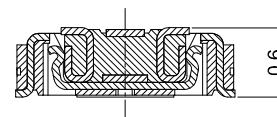
**Terminal Plating**  
 12-Au 2u" All  
**Housing Colour**  
 B-Black  
**Pin Q' PY**  
 50Pin  
**Height**  
 06-0.55mm



SECION:A-A 30:1



SECION:B-B 30:1



MATING HEIGHT 2:1

**G-Switch Specification:**

- 1.Current rated: 0.3A AC/DC (Signal Pin)  
Current rated: 5A AC/DC (Power Pin)
- 2.Voltage rating: 50V AC/DC
- 3.Withstanding voltage: 150V AC for 1 min
- 4.Contact resistance: 50mΩ max.
- 5.Insulation resistance: 50MΩ min
- 6.Durability cycle: 30 Cycles
- 7.Removal force: 0.015kgf/Pin min
- 8.Operating temperature range: -55°C ~ +85°C

SCALE: 1:1 UNIT: mm

SIZE: A4

Unless otherwise  
 General Tolerance:  
 X ±0.40  
 X.x ±0.30  
 X.xx ±0.20  
 X° ±5°  
 X.x° ±3°

Title: BTB 0.35 Pitch 180° H0.55mm 50Pin  
 SMT Type Female Connector

Molde Code: GT-B0354FSV06-50B1201

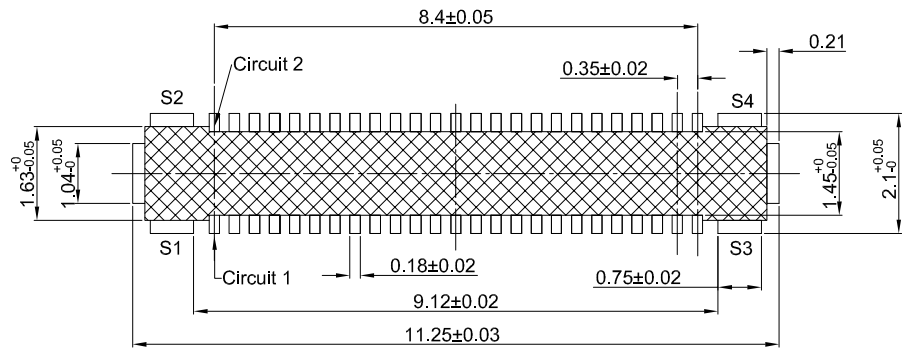
DRAWN	CHECKED	APPROVED	DATE
Hu	Hu	Chen	2022,12,28



REV: A0 SHEET: 1/2

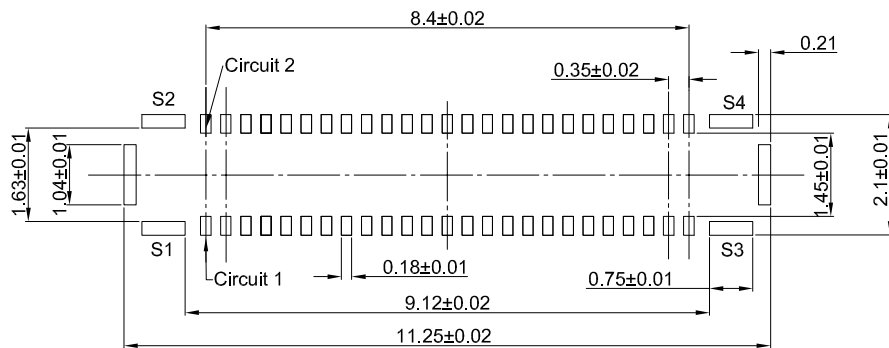
PART NAME	NUMBER	MATERIAL	REMARK
POWER PIN	S1-S4	Copper Alloy	Au 2u" All
SIGNAL PIN	PIN1 - PIN50	Copper Alloy	Au 2u" All
HOUSING	1PCS	LCP,94V-0	BLACK



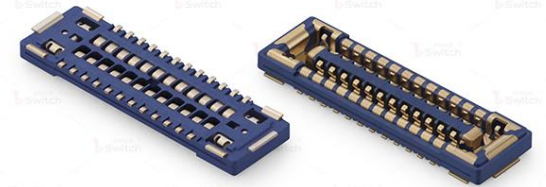


PCB REFERENCE DIAGRAM  
TOLERANCE:±0.05

□ SOLDER AREA  
 ⊗ NO EXPOSED METAL IN THIS AREA



RECOMMENDED METAL MASK DIMENSIONS  
METAL MASK THICKNESS: 80um



GT-B0354 F S V 06 -XX B 12 01

**G-Switch**  
**Series No**  
**F-Female**  
**Termipoint**  
 S-SMT  
**ANGLE**  
 V-180°

**Terminal Plating**  
 12-Au 2u" All  
**Housing Colour**  
 B-Black  
**Pin Q' PY**  
 50Pin  
**Height**  
 06-0.55mm

**G-Switch Specification:**

- 1.Current rated: 0.3A AC/DC (Signal Pin)  
 Current rated: 5A AC/DC (Power Pin)
- 2.Voltage rating: 50V AC/DC
- 3.Withstanding voltage: 150V AC for 1 min
- 4.Contact resistance: 50mΩ max.
- 5.Insulation resistance: 50MΩ min
- 6.Durability cycle: 30 Cycles
- 7.Removal force: 0.015kgf/Pin min
- 8.Operating temperature range: -55°C ~ +85°C

POWER PIN	S1-S4	Copper Alloy	Au 2u" All
SIGNAL PIN	PIN1 - PIN50	Copper Alloy	Au 2u" All
HOUSING	1PCS	LCP,94V-0	BLACK
PART NAME	NUMBER	MATERIAL	REMARK



SCALE: 1:1 UNIT: mm  
 SIZE: A4

Unless otherwise  
 General Tolerance:  
 X ±0.40  
 X.x ±0.30  
 X.xx ±0.20  
 X° ±5°  
 X.x° ±3°

Title: BTB 0.35 Pitch 180° H0.55mm 50Pin  
 SMT Type Female Connector

Molde Code: GT-B0354FSV06-50B1201

DRAWN	CHECKED	APPROVED	DATE
Hu	Hu	Chen	2022,12,28



REV: A0 SHEET: 2/2