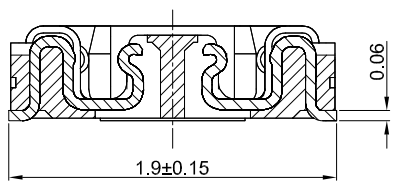
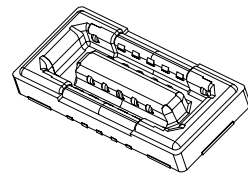
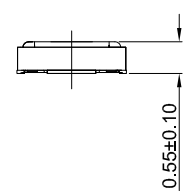
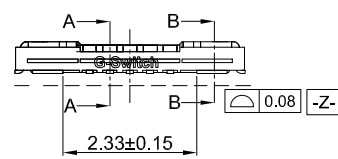
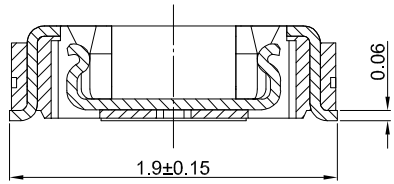


MATING HEIGHT 2:1



SECCION:A-A 30:1



SECCION:B-B 30:1



GT-B0354 F S V 06 -XX B 12 01

- G-Switch**
- Series No**
- F-Female**
- Termpoint**
S-SMT
- ANGLE**
V-180°
- Terminal Plating**
12-Au 2u" All
- Housing Colour**
B-Black
- Pin Q' PY**
10Pin
- Height**
06-0.55mm

G-Switch Specification:

- 1.Current rated: 0.3A AC/DC (Signal Pin)
Current rated: 5A AC/DC (Power Pin)
- 2.Voltage rating: 50V AC/DC
- 3.Withstanding voltage: 150V AC for 1 min
- 4.Contact resistance: 50mΩ max.
- 5.Insulation resistance: 50MΩ min
- 6.Durability cycle: 30 Cycles
- 7.Removal force: 0.015kgf/Pin min
- 8.Operating temperature range: -55°C ~ +85°C

POWER PIN	S1-S4	Copper Alloy	Au 2u" All
SIGNAL PIN	PIN1 - PIN50	Copper Alloy	Au 2u" All
HOUSING	1PCS	LCP,94V-0	BLACK
PART NAME	NUMBER	MATERIAL	REMARK



SCALE: 1:1 UNIT: mm
SIZE: A4

Unless otherwise General Tolerance:
X ±0.40
X.x ±0.30
X.xx ±0.20
X° ±5°
X.x° ±3°

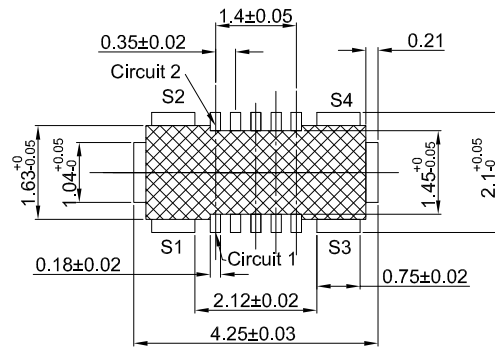
Title: BTB 0.35 Pitch 180° H0.55mm 10Pin
SMT Type Female Connector

Molde Code: GT-B0354FSV06-10B1201

DRAWN	CHECKED	APPROVED	DATE
Hu	Hu	Chen	2022.12.28

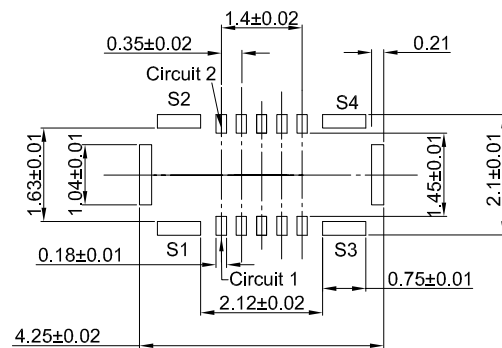


REV: A0 SHEET: 1/2



PCB REFERENCE DIAGRAM
TOLERANCE:±0.05

□ SOLDER AREA
 ⊗ NO EXPOSED METAL IN THIS AREA



RECOMMENDED METAL MASK DIMENSIONS
METAL MASK THICKNESS: 80um



GT-B0354 F S V 06 -XX B 12 01

G-Switch
Series No
F-Female
Termipoint
 S-SMT
ANGLE
 V-180°

Terminal Plating
 12-Au 2u" All
Housing Colour
 B-Black
Pin Q' PY
 10Pin
Height
 06-0.55mm

G-Switch Specification:

- 1.Current rated: 0.3A AC/DC (Signal Pin)
Current rated: 5A AC/DC (Power Pin)
- 2.Voltage rating: 50V AC/DC
- 3.Withstanding voltage: 150V AC for 1 min
- 4.Contact resistance: 50mΩ max.
- 5.Insulation resistance: 50MΩ min
- 6.Durability cycle: 30 Cycles
- 7.Removal force: 0.015kgf/Pin min
- 8.Operating temperature range: -55°C ~ +85°C

POWER PIN	S1-S4	Copper Alloy	Au 2u" All
SIGNAL PIN	PIN1 - PIN50	Copper Alloy	Au 2u" All
HOUSING	1PCS	LCP,94V-0	BLACK
PART NAME	NUMBER	MATERIAL	REMARK



SCALE: 1:1	UNIT: mm	Title: BTB 0.35 Pitch 180° H0.55mm 10Pin SMT Type Female Connector	
SIZE: A4		Unless otherwise General Tolerance: X ±0.40 X.x ±0.30 X.xx ±0.20 X* ±5° X.x* ±3°	
Molde Code: GT-B0354FSV06-10B1201		DRAWN	CHECKED
		APPROVED	DATE
		Hu	Hu
		Chen	2022,12,28



REV: A0	SHEET: 2/2
---------	------------