

1

2

3

4

5

A

A

B

B

C

C

D

D

E

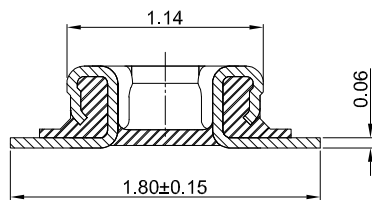
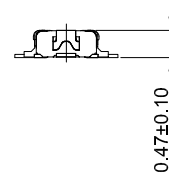
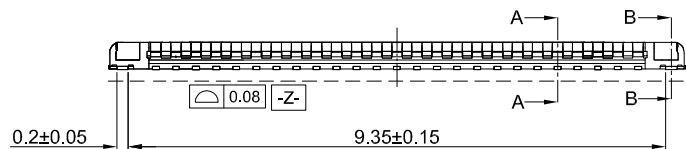
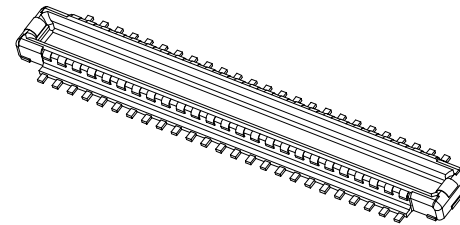
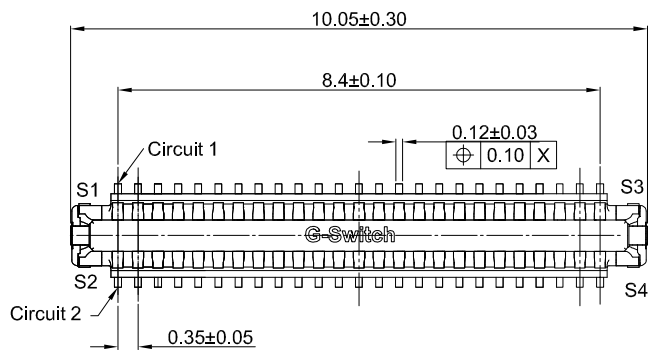
E



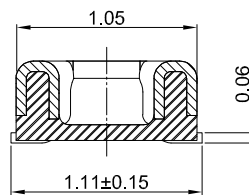
GT-B0354 M S V 05 -XX B 12 01

G-Switch
Series No
M-Male
Termpoint
 S-SMT
ANGLE
 V-180°

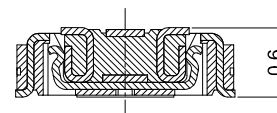
Terminal Plating
 12-Au 2u" All
Housing Colour
 B-Black
Pin Q' PY
 50Pin
Height
 05-0.47mm



SECION:A-A 30:1



SECION:B-B 30:1



MATING HEIGHT 2:1

G-Switch Specification:

- 1.Current rated: 0.3A AC/DC (Signal Pin)
Current rated: 5A AC/DC (Power Pin)
- 2.Voltage rating: 50V AC/DC
- 3.Withstanding voltage: 150V AC for 1 min
- 4.Contact resistance: 50mΩ max.
- 5.Insulation resistance: 50MΩ min
- 6.Durability cycle: 30 Cycles
- 7.Removal force: 0.015kgf/Pin min
- 8.Operating temperature range: -55°C ~ +85°C

SCALE: 1:1 UNIT: mm
 SIZE: A4

Title: BTB 0.35 Pitch 180° H0.47mm 50Pin
 SMT Type Male Connector

Unless otherwise
 General Tolerance:
 X ±0.40
 X.x ±0.30
 X.xx ±0.20
 X° ±5°
 X.x° ±3°

Molde Code: GT-B0354MSV05-50B1201			
DRAWN	CHECKED	APPROVED	DATE
Hu	Hu	Chen	2022,12,28



REV: A0 SHEET: 1/2

POWER PIN	S1-S4	Copper Alloy	Au 2u" All
SIGNAL PIN	PIN1 - PIN50	Copper Alloy	Au 2u" All
HOUSING	1PCS	LCP,94V-0	BLACK
PART NAME	NUMBER	MATERIAL	REMARK



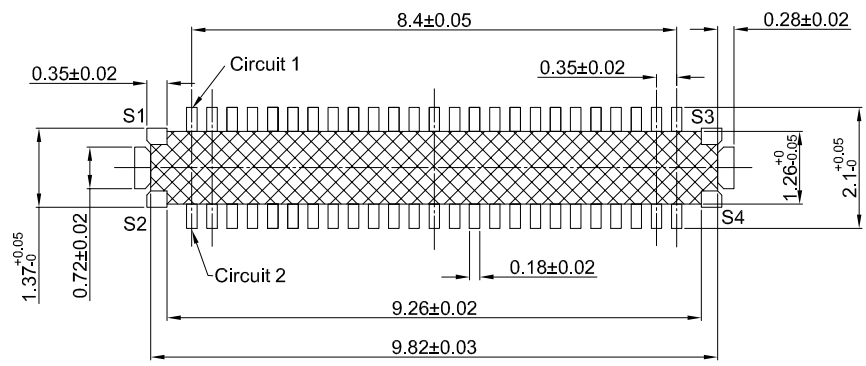
1

2

3

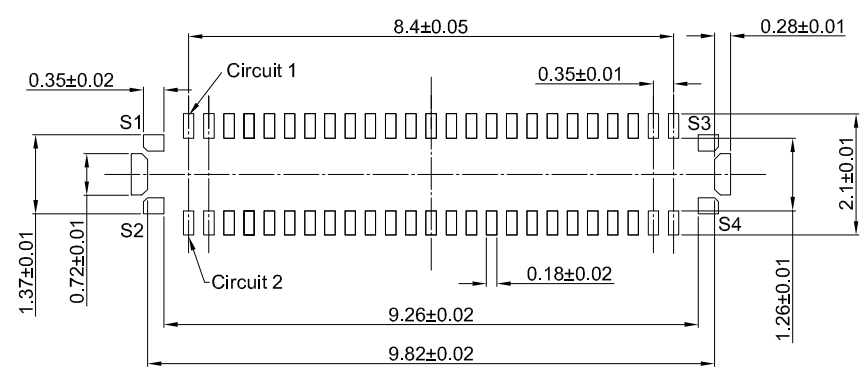
4

5

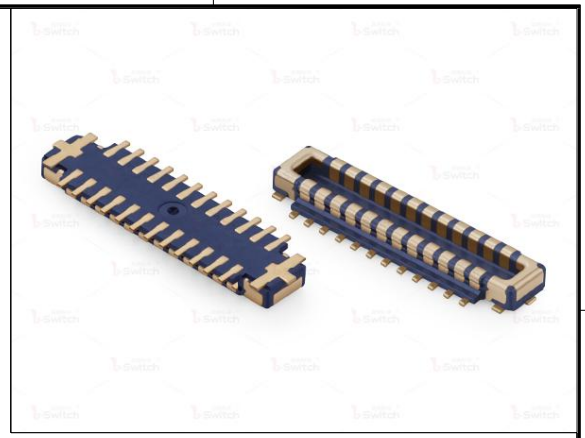


PCB REFERENCE DIAGRAM
TOLERANCE:±0.05

□ SOLDER AREA
 ▨ NO EXPOSED METAL IN THIS AREA



RECOMMENDED METAL MASK DIMENSIONS
METAL MASK THICKNESS: 80um



GT-B0354 M S V 05 -XX B 12 01

G-Switch
Series No
M-Male
Termpoint
 S-SMT
ANGLE
 V-180°

Terminal Plating
 12-Au 2u" All
Housing Colour
 B-Black
Pin Q' PY
 50Pin
Height
 05-0.47mm

- G-Switch Specification:**
- Current rated: 0.3A AC/DC (Signal Pin)
Current rated: 5A AC/DC (Power Pin)
 - Voltage rating: 50V AC/DC
 - Withstanding voltage: 150V AC for 1 min
 - Contact resistance: 50mΩ max.
 - Insulation resistance: 50MΩ min
 - Durability cycle: 30 Cycles
 - Removal force: 0.015kgf/Pin min
 - Operating temperature range: -55°C ~ +85°C

POWER PIN	S1-S4	Copper Alloy	Au 2u" All
SIGNAL PIN	PIN1 - PIN50	Copper Alloy	Au 2u" All
HOUSING	1PCS	LCP,94V-0	BLACK
PART NAME	NUMBER	MATERIAL	REMARK



SCALE: 1:1	UNIT: mm	Title: BTB 0.35 Pitch 180° H0.47mm 50Pin	
SIZE: A4		SMT Type Male Connector	
Unless otherwise General Tolerance:		Molde Code: GT-B0354MSV05-50B1201	
X	±0.40	DRAWN	CHECKED
X.x	±0.30	APPROVED	DATE
X.xx	±0.20		
X°	±5°		
X.x°	±3°		
		Hu	Hu
		Chen	2022.12.28



REV: A0	SHEET: 2/2
---------	------------