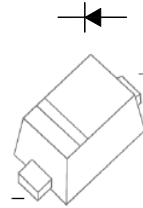


FEATURES

- Small surface mounting type
- Low I_R
- High reliability

MECHANICAL DATA

- * Case: Molded plastic
- * Epoxy: UL 94V-0 rate flame retardant
- * Metallurgically bonded construction
- * Polarity: Color band denotes cathode end
- * Mounting position: Any



SOD-523



VOLTAGE RANGE
40 Volts
CURRENT
200mA

MAXIMUM RATINGS AND ELECTRICAL CHARACTERISTICS

Absolute Maximum Ratings ($T_a = 25\text{ }^\circ\text{C}$)

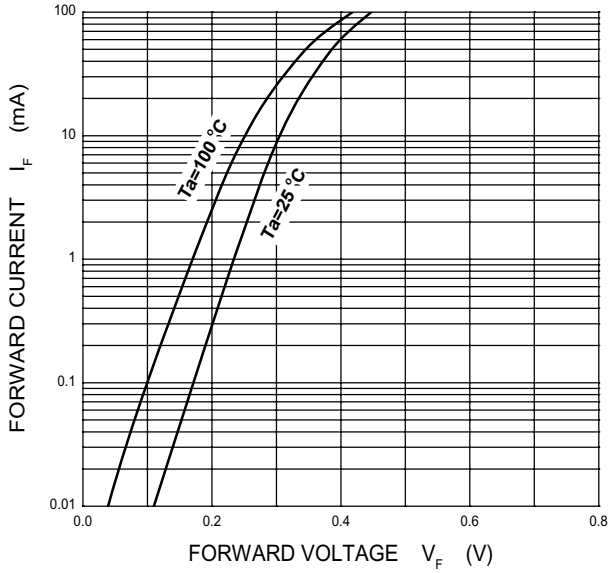
Parameter	Symbol	Limit	Unit
DC reverse voltage	V_R	40	V
Mean rectifying current	I_o	0.2	A
Non-repetitive peak forward surge current@ $t=8.3\text{ms}$	I_{FSM}	1	A
Power Dissipation	P_D	150	mW
Thermal resistance from junction to ambient	$R_{\theta JA}$	667	$^\circ\text{C}/\text{W}$
Junction temperature	T_J	125	$^\circ\text{C}$
Storage temperature	T_{STG}	-55~+150	

Characteristics at $T_a = 25\text{ }^\circ\text{C}$

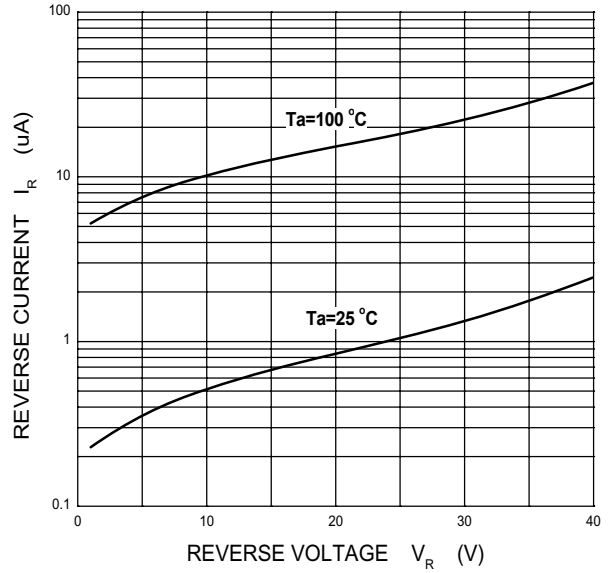
Parameter	Symbol	Min	Typ	Max	Unit	Conditions
Forward voltage	V_F		0.304 0.446	0.39 0.55	V	$I_F=10\text{mA}$ $I_F=100\text{mA}$
Reverse current	I_R		0.605 2.837	1 10	μA	$V_R=10\text{V}$ $V_R=40\text{V}$

RATING AND CHARACTERISTIC CURVES

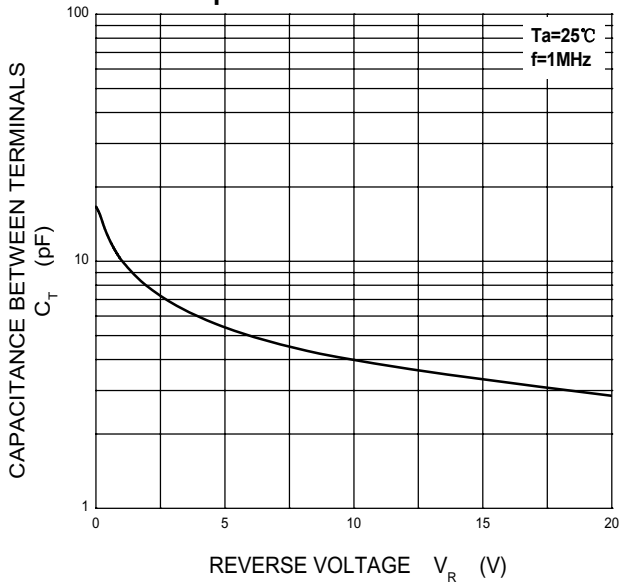
Forward Characteristics



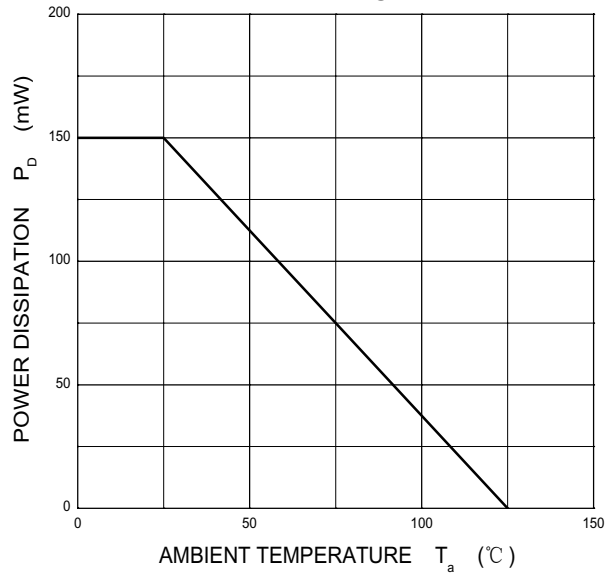
Reverse Characteristics



Capacitance Characteristics



Power Derating Curve



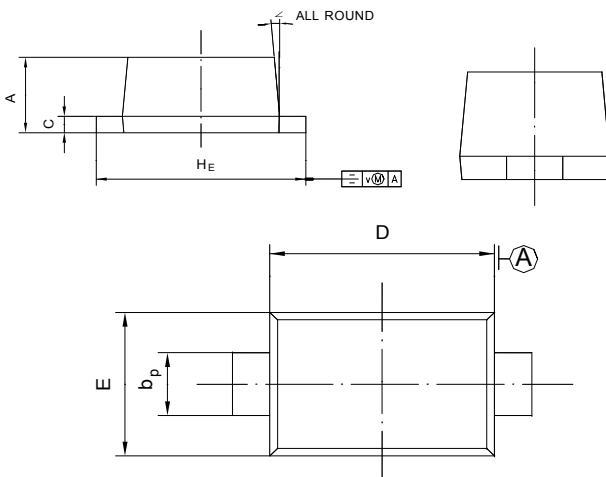
Soldering parameters

Reflow Condition		Pb-Free assembly (see as below)
Pre Heat	-Temperature Min ($T_{s(min)}$)	+150°C
	-Temperature Max($T_{s(max)}$)	+200°C
	-Time (Min to Max) (ts)	60-180 secs.
Average ramp up rate (Liquid us Temp (T_L) to peak)		3°C/sec. Max
$T_{s(max)}$ to T_L - Ramp-up Rate		3°C/sec. Max
Reflow	-Temperature(T_L)(Liquid us)	+217°C
	-Temperature(t_L)	60-150 secs.
Peak Temp (T_P)		+260(+0/-5)°C
Time within 5°C of actual Peak Temp (t_p)		30 secs. Max
Ramp-down Rate		6°C/sec. Max
Time 25°C to Peak Temp (T_P)		8 min. Max
Do not exceed		+260°C

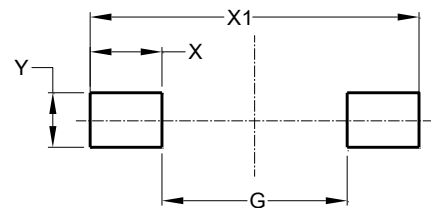


Package Dimensions & Suggested Pad Layout

SOD523

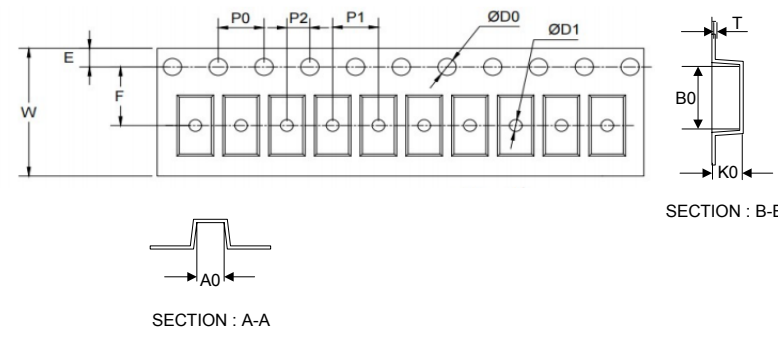
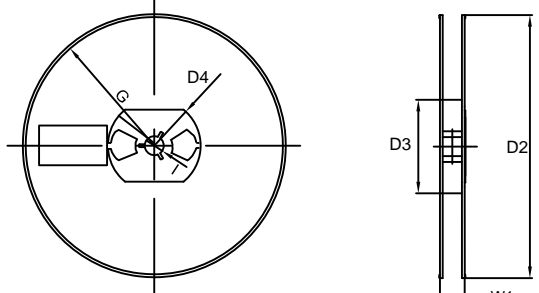


UNIT	A	b_P	C	D	E	H_E	V	∇
mm	0.70 0.50	0.40 0.20	0.14 0.05	1.30 1.10	0.90 0.75	1.70 1.50	0.1	5°



Dimensions	Value (in mm)
G	0.85
X	0.70
X1	2.25
Y	0.80

Tape & reel specification

Tape	Symbol	Dimension (mm)	
	P0	4.00±0.20	
	P1	2.00±0.20	
	P2	2.00±0.20	
	D0	1.55±0.20	
	D1	0.50±0.20	
	E	1.55±0.25	
	F	3.60±0.20	
	W	8.00±0.20	
	A0	1.30±0.20	
	B0	2.35±0.20	
	K0	0.95±0.20	
	T	0.20±0.20	
	<p>7" Reel</p> 	D2	177.0±5.0
		D3	55Min.
		D4	R24.6±2.0
G		R82.0±2.0	
I		13.0±2.0	
W1		10.20±3.0	
Quantity: 3000PCS			