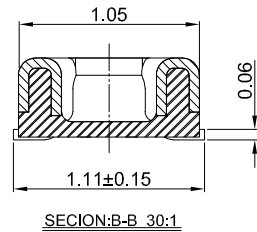
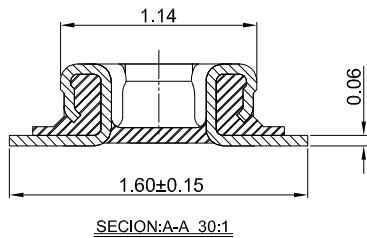
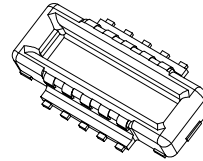
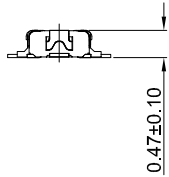
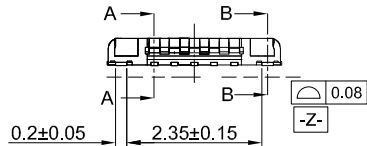


MATING HEIGHT 2:1



GT-B0354 M S V 05 -XX B 12 01

G-Switch
Series No
M-Male
Termipoint
 S-SMT
ANGLE
 V-180°

Terminal Plating
 12-Au 2u" All
Housing Colour
 B-Black
Pin Q' PY
 10Pin
Height
 05-0.47mm

G-Switch Specification:

- Current rated: 0.3A AC/DC (Signal Pin)
Current rated: 5A AC/DC (Power Pin)
- Voltage rating: 50V AC/DC
- Withstanding voltage: 150V AC for 1 min
- Contact resistance: 50mΩ max.
- Insulation resistance: 50MΩ min
- Durability cycle: 30 Cycles
- Removal force: 0.015kgf/Pin min
- Operating temperature range: -55°C ~ +85°C

SCALE: 1:1 UNIT: mm
 SIZE: A4

Title: BTB 0.35 Pitch 180° H0.47mm 10Pin
 SMT Type Male Connector

Unless otherwise
 General Tolerance:

X ±0.40
 X.x ±0.30
 X.xx ±0.20
 X° ±5°
 X.x° ±3°

Molde Code: GT-B0354MSV05-10B1201

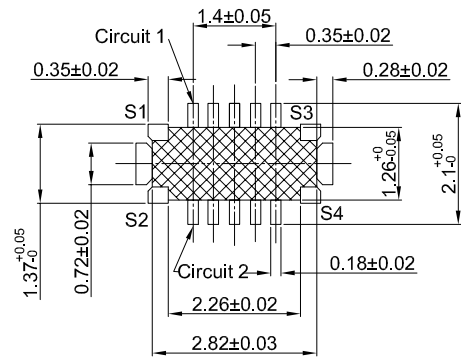
DRAWN	CHECKED	APPROVED	DATE
Hu	Hu	Chen	2022,12,28



REV: A0 SHEET: 1/2

PART NAME	NUMBER	MATERIAL	REMARK
POWER PIN	S1-S4	Copper Alloy	Au 2u" All
SIGNAL PIN	PIN1 - PIN50	Copper Alloy	Au 2u" All
HOUSING	1PCS	LCP,94V-0	BLACK

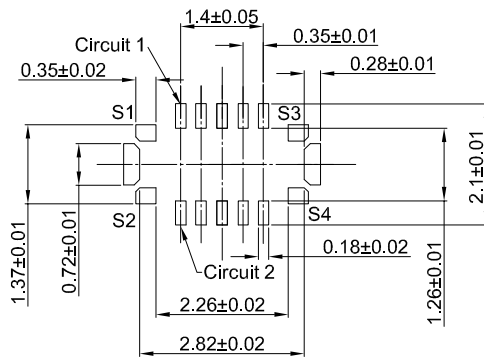




PCB REFERENCE DIAGRAM

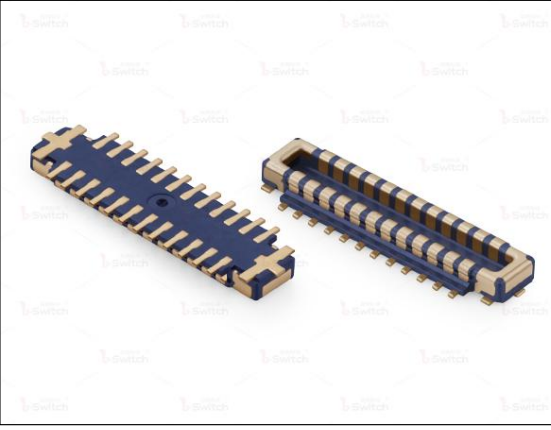
TOLERANCE:±0.05

- SOLDER AREA
- NO EXPOSED METAL IN THIS AREA



RECOMMENDED METAL MASK DIMENSIONS

METAL MASK THICKNESS: 80um



GT-B0354 M S V 05 -XX B 12 01

- G-Switch**
- Series No**
- M-Male**
- Termpoint**
S-SMT
- ANGLE**
V-180°
- Terminal Plating**
12-Au 2u" All
- Housing Colour**
B-Black
- Pin Q' PY**
10Pin
- Height**
05-0.47mm

G-Switch Specification:

- 1.Current rated: 0.3A AC/DC (Signal Pin)
Current rated: 5A AC/DC (Power Pin)
- 2.Voltage rating: 50V AC/DC
- 3.Withstanding voltage: 150V AC for 1 min
- 4.Contact resistance: 50mΩ max.
- 5.Insulation resistance: 50MΩ min
- 6.Durability cycle: 30 Cycles
- 7.Removal force: 0.015kgf/Pin min
- 8.Operating temperature range: -55°C ~ +85°C

POWER PIN	S1-S4	Copper Alloy	Au 2u" All
SIGNAL PIN	PIN1 - PIN50	Copper Alloy	Au 2u" All
HOUSING	1PCS	LCP,94V-0	BLACK
PART NAME	NUMBER	MATERIAL	REMARK



SCALE: 1:1	UNIT: mm	Title: BTB 0.35 Pitch 180° H0.47mm 10Pin SMT Type Male Connector			
SIZE: A4		Molde Code: GT-B0354MSV05-10B1201			
Unless otherwise General Tolerance: X ±0.40 X.x ±0.30 X.xx ±0.20 X° ±5° X.x° ±3°		DRAWN	CHECKED	APPROVED	DATE
		Hu	Hu	Chen	2022,12,28
		REV: A0	SHEET: 2/2		

