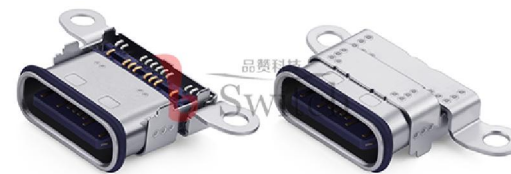
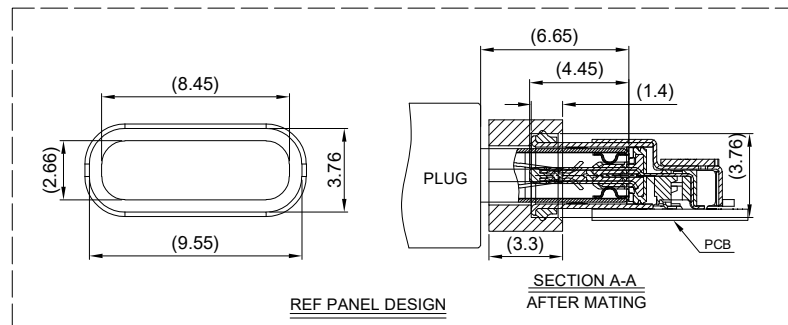
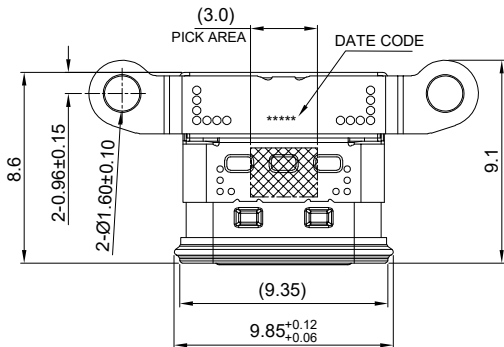
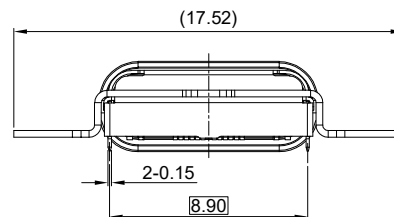
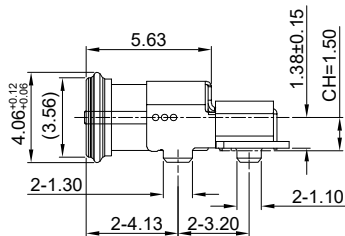
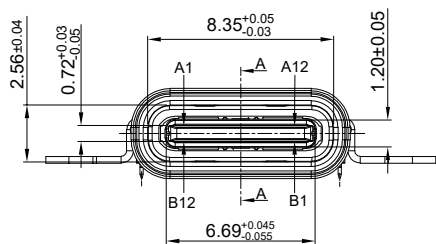


A



B

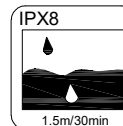
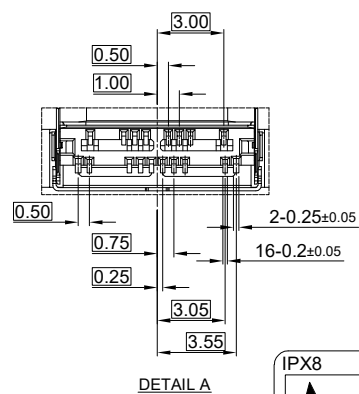
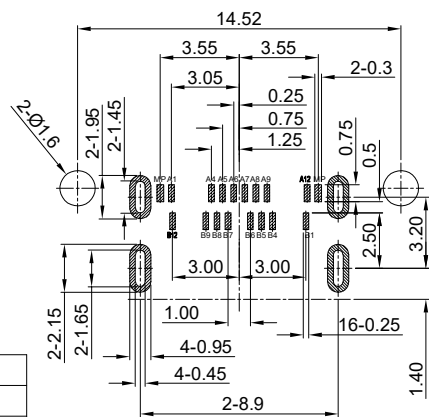
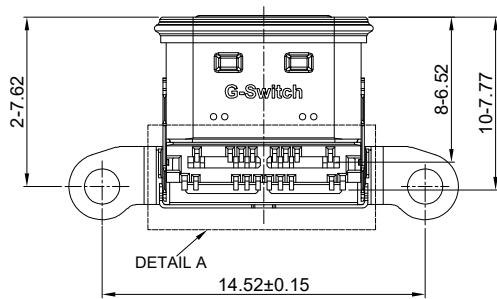


**G-Switch USB-C Specification:**

1. Current rated: 5A on vbus/1.25A on vconn/0.25A on other
2. Voltage rating: 24V AC
3. Withstanding voltage: 100V AC/minute
4. Contact resistance: 40mΩ Max
5. Insulation resistance: 100MΩ Min
6. Operating temperature: -40°C ~ +85°C
7. Mating force: 5N~20N
8. Unmating force: 8N~20N
9. Durability cycle: 10,000 cycles
10. Waterproof grade: IP-X8.
11. Compliant with: IEC62680-1-3

品赞电子(东莞)有限公司

D



A1	A2	A3	A4	A5	A6	A7	A8	A9	A10	A11	A12
GND			VBUS	CC1	D+	D-	SBU1	VBUS			GND
First			First	Second	Second	Second	Second	First			First
B12	B11	B10	B9	B8	B7	B6	B5	B4	B3	B2	B1
GND			VBUS	SBU2	D-	D+	CC2	VBUS			GND
First			First	Second	Second	Second	Second	First			First

10	BRACKET	SUS301	Ni30u"MIN PLATED
9	EMI	SUS301	Ni30u"MIN PLATED
8	ADHESIVE	EPOXY RESIN	BLACK
7	WATERPROOF RING	SILIGA GEL	BLACK
6	INSIDE PLATE	SUS304	--
5	OUT SHELL	SUS304	Ni30u"MIN PLATED
4	INNER SHELL	SUS316	--
3	MID PLATE	SUS301	--
2	TERMINALS	COPPER ALLOY C7025	Au3u"MIN PLATING ON CONTACT AREA Au1u"MIN PLATING ON SOLDER AREA
1	HOUSING	PA9T	BLACK UL 94 V-0
NO.	PARTS	MATERIAL	REMARKS

PCB REFERENCE DIAGRAM  
TOLERANCE:±0.05



SCALE: 1:1 UNIT: mm  
SIZE: A4

Unless otherwise General Tolerance:  
X. ±0.40  
X.x ±0.30  
X.xx ±0.20  
X.xxx ±0.10  
X" ±5°

Title: IPX8 Horizontal Type-C 16P Female  
SMT CH=1.5 L=9.1mm

Molde Code: GT-USB-9045F

DRAWN	CHECKED	APPROVED	DATE
Wu	Xia	Chen	2024.12.17



REV: A1 SHEET: 1/1