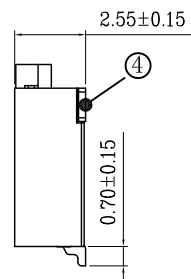
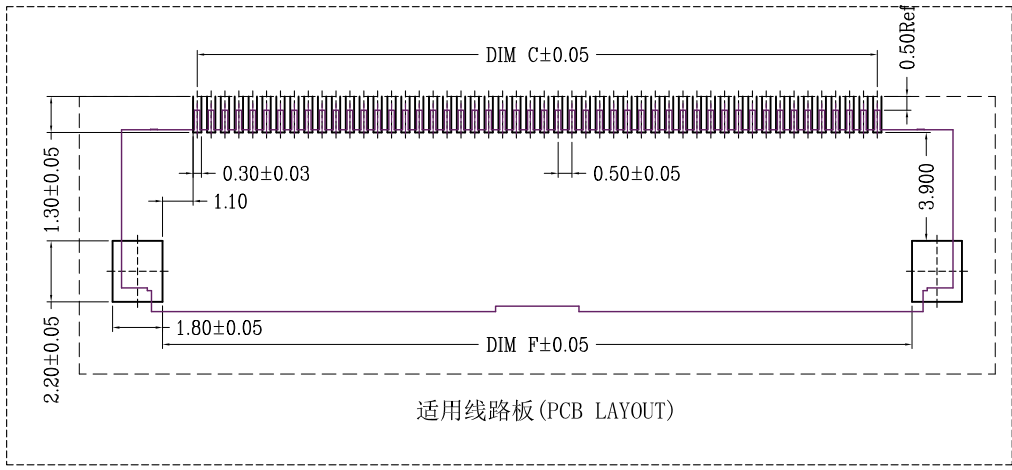
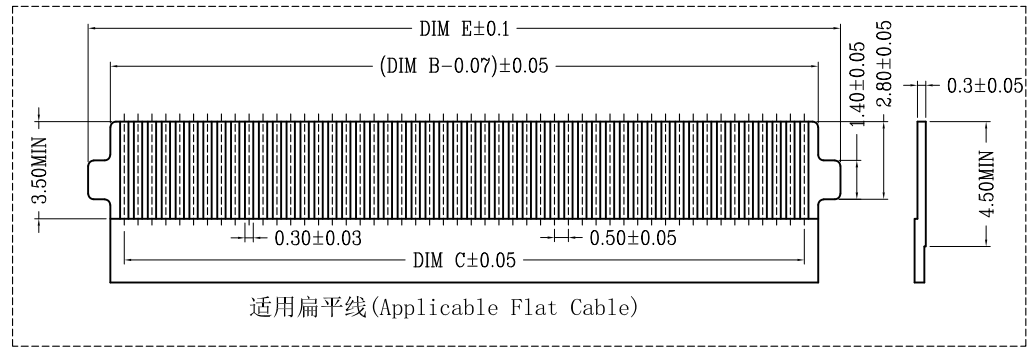
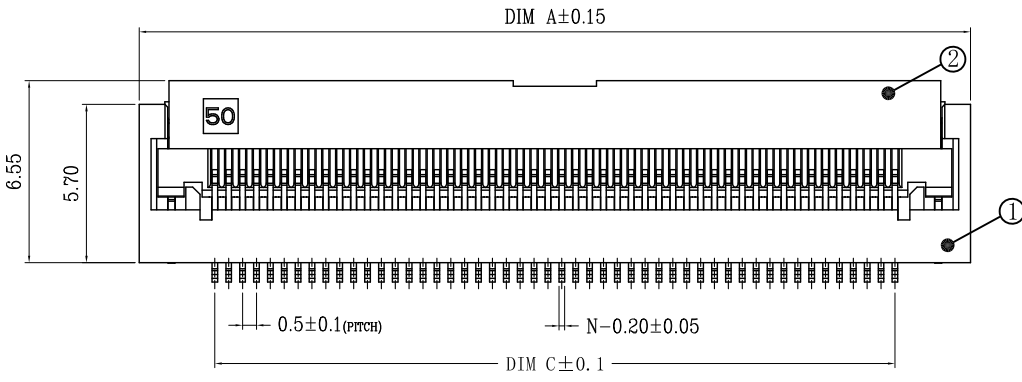
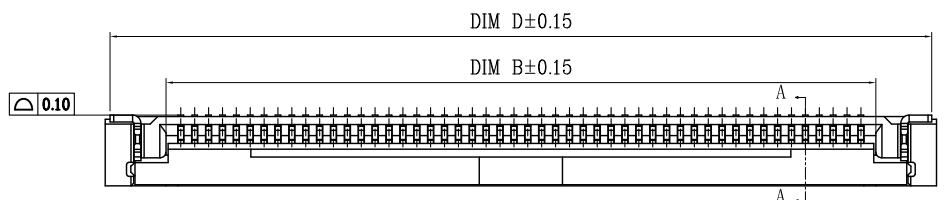


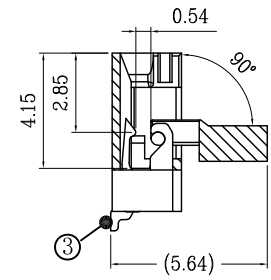
版次	更新摘要	日期	序号	品名	材质
0	新图制定	2022.3.25			



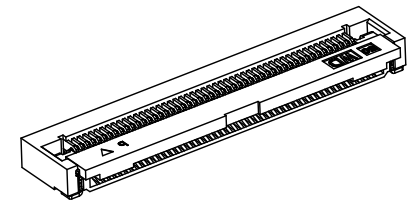
技术指标:

1. 塑件表面应光洁、无毛边、无明显收缩、缺陷、裂纹等现象。
2. 温度范围: -25° C ~ 85° C.
3. 额定电流: 0.5A
4. 额定电压: 50V, AC.
5. 接触电阻: 50mΩ MAX.
6. 绝缘电阻: 500MΩ Min.
7. 耐电压: 150V AC/1Minute
8. 产品料号: 5001-FPC0525-**-R1-00-B

JM FPC CONNECTOR SERIES
 PITCH: 0.5
 HIGH: 2.55
 ALTERNATE PACKING: R: 卷
 PIN
 standby



SECTION A-A
SCALE 1:1



一般公差 (TOLERANCE)
 X ± 0.50 .XX ± 0.10
 X ± 0.20 .XXX ± 0.05
 ANGLES ± 1°

深圳市文章济美科技有限公司

品名 (TITLE)	0.5 Pitch掀盖卧式下接带扣 (H=2.55) 业务图			制图 (DR)
料号 (DWG.NO)	5001-FPC0525-**R1-00-B			校对 (CHKD)
比例 (SCALE)	1:1	单位 (UNITS)	mm	审核 (APPD)
张数 (SHEET)	1 OF 2	尺寸 (SIZE)	A4	REV

CKT	DIM A	DIM B	DIM C	DIM D	DIM E	DIM F
5	7.45	3.07	2.00	7.10	4.60	4.50
6	7.95	3.57	2.50	7.60	5.10	5.00
7	8.45	4.07	3.00	8.10	5.60	5.50
8	8.95	4.57	3.50	8.60	6.10	6.00
9	9.45	5.07	4.00	9.10	6.60	6.50
10	9.95	5.57	4.50	9.60	7.10	7.00
11	10.45	6.07	5.00	10.10	7.60	7.50
12	10.95	6.57	5.50	10.60	8.10	8.00
13	11.45	7.07	6.00	11.10	8.60	8.50
14	11.95	7.57	6.50	11.60	9.10	9.00
15	12.45	8.07	7.00	12.10	9.60	9.50
16	12.95	8.57	7.50	12.60	10.10	10.00
17	13.45	9.07	8.00	13.10	10.60	10.50
18	13.95	9.57	8.50	13.60	11.10	11.00
19	14.45	10.07	9.00	14.10	11.60	11.50
20	14.95	10.57	9.50	14.60	12.10	12.00
21	15.45	11.07	10.00	15.10	12.60	12.50
22	15.95	11.57	10.50	15.60	13.10	13.00
23	16.45	12.07	11.00	16.10	13.60	13.50
24	16.95	12.57	11.50	16.60	14.10	14.00
25	17.45	13.07	12.00	17.10	14.60	14.50
26	17.95	13.57	12.50	17.60	15.10	15.00
27	18.45	14.07	13.00	18.10	15.60	15.50
28	18.95	14.57	13.50	18.60	16.10	16.00
29	19.45	15.07	14.00	19.10	16.60	16.50
30	19.95	15.57	14.50	19.60	17.10	17.00
31	20.45	16.07	15.00	20.10	17.60	17.50
32	20.95	16.57	15.50	20.60	18.10	18.00
33	21.45	17.07	16.00	21.10	18.60	18.50
34	21.95	17.57	16.50	21.60	19.10	19.00
35	22.45	18.07	17.00	22.10	19.60	19.50
36	22.95	18.57	17.50	22.60	20.10	20.00
37	23.45	19.07	18.00	23.10	20.60	20.50
38	23.95	19.57	18.50	23.60	21.10	21.00
39	24.45	20.07	19.00	24.10	21.60	21.50
40	24.95	20.57	19.50	24.60	22.10	22.00
41	25.45	21.07	20.00	25.10	22.60	22.50
42	25.95	21.57	20.50	25.60	23.10	23.00

CKT	DIM A	DIM B	DIM C	DIM D	DIM E	DIM F
43	26.45	22.07	21.00	26.10	23.60	23.50
44	26.95	22.57	21.50	26.60	24.10	24.00
45	27.45	23.07	22.00	27.10	24.60	24.50
46	27.95	23.57	22.50	27.60	25.10	25.00
47	28.45	24.07	23.00	28.10	25.60	25.50
48	28.95	24.57	23.50	28.60	26.10	26.00
49	29.45	25.07	24.00	29.10	26.60	26.50
50	29.95	25.57	24.50	29.60	27.10	27.00
51	30.45	26.07	25.00	30.10	27.60	27.50
52	30.95	26.57	25.50	30.60	28.10	28.00
53	31.45	27.07	26.00	31.10	28.60	28.50
54	31.95	27.57	26.50	31.60	29.10	29.00
55	32.45	28.07	27.00	32.10	29.60	29.50
56	32.95	28.57	27.50	32.60	30.10	30.00
57	33.45	29.07	28.00	33.10	30.60	30.50
58	33.95	29.57	28.50	33.60	31.10	31.00
59	34.45	30.07	29.00	34.10	31.60	31.50
60	34.95	30.57	29.50	34.60	32.10	32.00
61	35.45	31.07	30.00	35.10	32.60	32.50
62	35.95	31.57	30.50	35.60	33.10	33.00
63	36.45	32.07	31.00	36.10	33.60	33.50
64	36.95	32.57	31.50	36.60	34.10	34.00
65	37.45	33.07	32.00	37.10	34.60	34.50
66	37.95	33.57	32.50	37.60	35.10	35.00
67	38.45	34.07	33.00	38.10	35.60	35.50
68	38.95	34.57	33.50	38.60	36.10	36.00
69	39.45	35.07	34.00	39.10	36.60	36.50
70	39.95	35.57	34.50	39.60	37.10	37.00
71	40.45	36.07	35.00	40.10	37.60	37.50
72	40.95	36.57	35.50	40.60	38.10	38.00
73	41.45	37.07	36.00	41.10	38.60	38.50
74	41.95	37.57	36.50	41.60	39.10	39.00
75	42.45	38.07	37.00	42.10	39.60	39.50
76	42.95	38.57	37.50	42.60	40.10	40.00
77	43.45	39.07	38.00	43.10	40.60	40.50
78	43.95	39.57	38.50	43.60	41.10	41.00
79	44.45	40.07	39.00	44.10	41.60	41.50
80	44.95	40.57	39.50	44.60	42.10	42.00



一般公差 (TOLERANCE)
 X ±.50 .XX ±.10
 X ±.20 .XXX ±.05
 ANGLES ±1°

深圳市文章济美科技有限公司

品名 (TITLE) 0.5 Pitch掀盖卧式下接带扣(H=2.55)业务图	制图 (DR)
料号 (DWG.NO) 5001-FPC0525-***R1-00	校对 (CHKD)
比例 (SCALE) 1:1	审核 (APPD)
单位 (UNITS) mm	张数 (SHEET) 2 OF 2
	SIZE A4
	REV A