

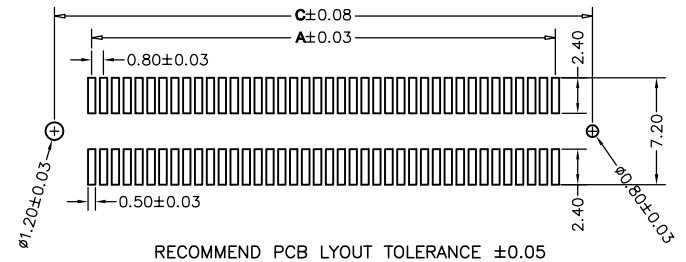
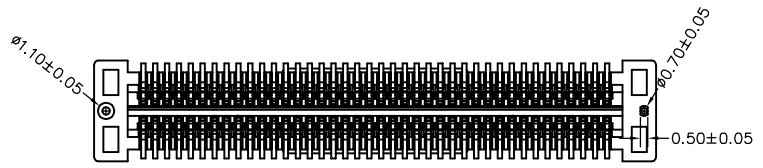
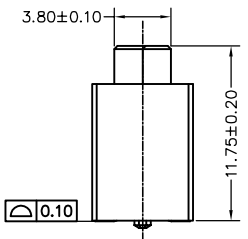
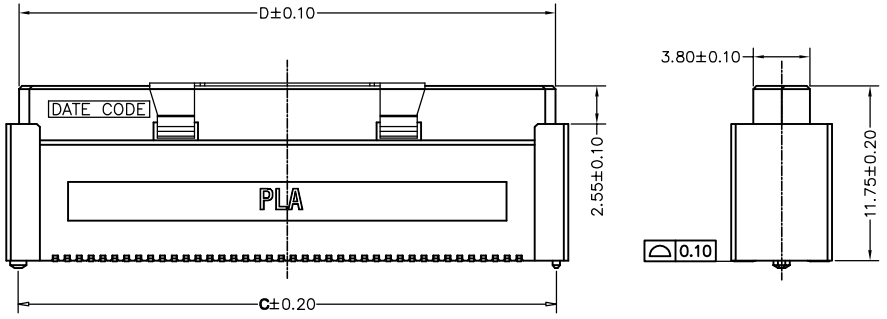
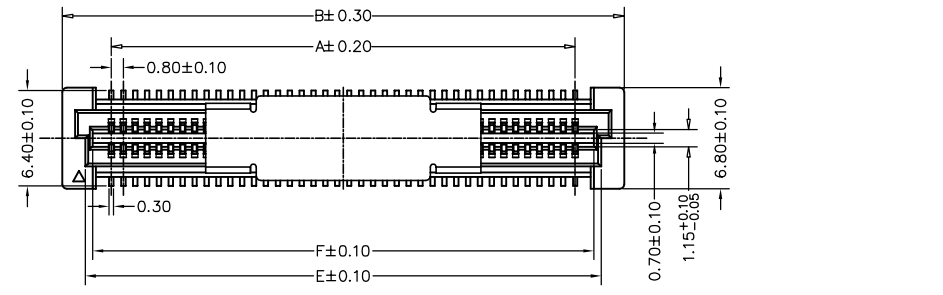
REV	ECN. NO.	DESC.	APPD.
A	WE211008	新版发行	LWW 211013

- NOTES: (UNLESS OTHERWISE SPECIFIED)
1. DIMENSION SHALL BE INTERPRETED PER ANSI Y14.5M-1994
 2. INSERTION FORCE: 150g MAX. PER CONTACT.
 3. WITHDRAW FORCE: 25g MIN. PER CONTACT.
 4. DURABILITY: 30 CYCLES .
 5. VOLTAGE RATING:50V AC
 6. CURRENT RATING:1.0 AMPERE.
 7. CONTACT RESISTANCE:50 m ohms MAX. FOR INITIAL.
 8. DIELECTRIC WITHSTANDING VOLTAGE: 500V AC rms./MINUTE.
 9. INSULATION RESISTANCE: 100 Megohms MIN..
 10. HARMFUL MATERIAL SHOULD BE COMPLIANT TO DOC. STANDARDS.
 11. PRODUCT NUMBER MATRIX:

5001-BAP08117-**FR-00-B

Standby

包装: REEL
 FEMALE: 母座
 FIN
 HIGH: S1-11.75MM
 0.8 Pitch
 JMECONN BTB CONNECTOR SERIES



CIRCUITS	DIM.A	DIM.B	DIM.C	DIM.D	DIM.E	DIM.F
40	15.20	21.80	20.20	20.10	18.70	17.70
60	23.20	29.80	28.20	28.10	26.70	25.70
80	31.20	37.80	36.20	36.10	34.70	33.70
100	39.20	45.80	44.20	44.10	42.70	41.70
120	47.20	53.80	52.20	52.10	50.70	49.70
140	55.20	61.80	60.20	60.10	58.70	57.70
160	63.20	69.80	68.20	68.10	66.70	65.70
180	71.20	77.80	76.20	76.10	74.70	73.70
200	79.20	85.80	84.20	84.10	82.70	81.70

X.± 0.30	.X± 0.25	.XX± 0.20	NAME<INTENDED USE>: 0.8MM BTB CONN.	东莞市文章济美电子有限公司
X.'± 3'	.X'± 2'	.XX'±	PART NO.<INTENDED USE>: 5001-BAP08117-**FR-00-B	TITLE: CUSTOMER DRAWING
UNITS: mm	DATE: 2021-10-13	MAT'L	APPD:	DWG NO.: 600-0000-0399
CHKD:	DR:	SCALE	SHEET	REV
		N/A	1/1	A