

SPECIFICATION FOR APPROVAL

承 認 書

CUSTOMER

客戶名稱：

NUMBER

編號： L-4520A

DESCRIPTION

品 名： Common Mode Line Filter

QUANTITY

數量： 20 PCS

PART NO.

型 號： CCM4520A -901

DATE

日期： 2025-03-04

CUSTOMER PART NO.

客戶料號：

NOTE

注解：

APPROVAL SIGNATURE

客戶承認簽章

Approved By 核 准	Checked By 审 查	Drawn By 制 作
李 庆 辉	苏 高 峰	劳 水 花

深圳市柯爱亚电子有限公司

Shenzhen Ceaiya Electronics Co., Ltd.

深圳地址：深圳市龙华区高新技术开发区捷顺科技中心 B706

东莞地址：东莞市清溪镇力合紫荆智造中心 10 栋一单元

Http : //www.szceaiya.com Tel: 0769-89333213



CUSTOMER:	SPECIFICATIONS (R e v i s i o n s)	TYPE CCM4520A-901
-----------	---	-----------------------------

History of change

Rev.	Effective Date	Changed Contents	Change reasons	Approved By
A0	2025-03-04	New release	/	

Note :	Spec. No. L-4520A
--------	----------------------



SPECIFICATIONS

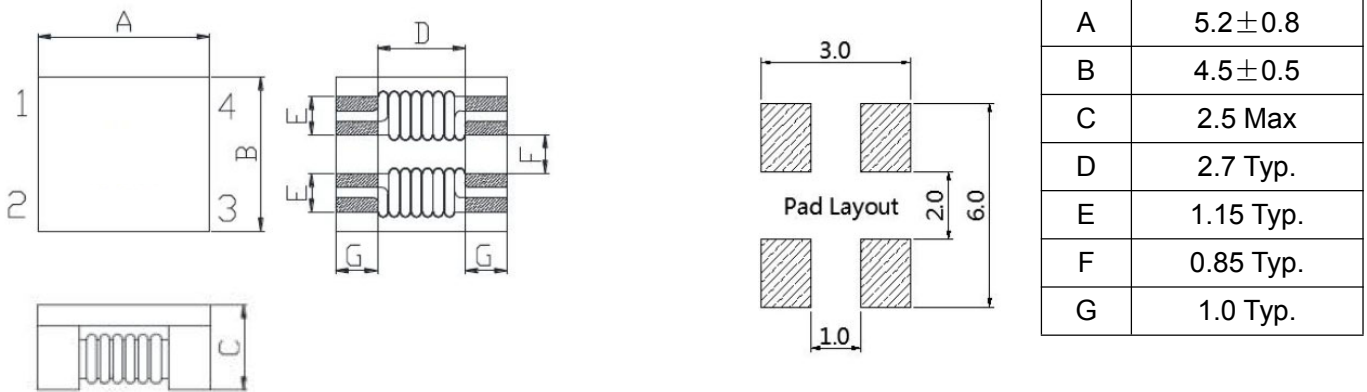
TYPE:
CCM4520A-901

1. Scope

This specification apply for CCM4520A Common mode filter

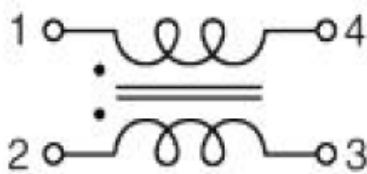
2. Appearance

2-1. Dimensions(mm)



3. Coils Specification

3-1. Connection (Bottom View)



3-2. Electronical characteristics

Part No.	Impedance(Ω) (at 100MHz)		DC Resistance (mΩ)Max. [1 line]	Rated Current (A) Max.	Rated Volt. (Vdc) Max.	IR (MΩ) Min.
	MIN	TYP				
CCM4520A -901	650	900	68	2.1	50	10

- a . Rated Current: Temp. rise 40°C Typ.
- b . Operating temp.: -40°C----+125°C (Temp. rise included)
- c . Storage Temperature: -20°C up to +40°C,75% RH Max.

Note :	Spec. No. L-4520A
--------	----------------------

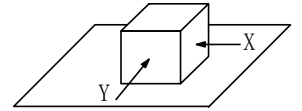
SPECIFICATIONS

TYPE:
CCM4520A -901

4. General Characteristics

- 4-1. Storage Temperature range : $-40^{\circ}\text{C} \sim +100^{\circ}\text{C}$
- 4-2. Operating temperature range: $-40^{\circ}\text{C} \sim +100^{\circ}\text{C}$ (Including coil's self temperature rise)

4-3. External appearance : No external defects can be found in the visual inspection.



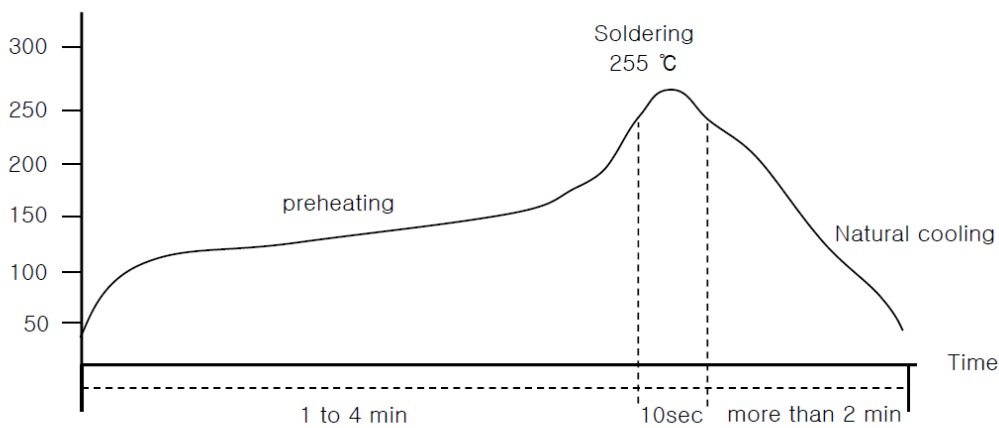
4-4. Electrode strength : No electrode detachment should be found when the device is pushed in two directions of X and Y with the force of 10.0N for 10 ± 2 seconds after soldering between copper plate and the electrodes. (Refer to figure at right)

4-5. Vibration test : Inductance deviation is within $\pm 3.0\%$ after 1 hour sweeping vibration in each three directions, namely, forward and backward, up and down, right and left. The frequency is $10 \sim 55 \sim 10\text{Hz}$ and the amplitude of 1 minute cycle is 1.5mm PP.

4-6. Humidity test : Inductance deviation is within $\pm 5.0\%$ after 96 ± 4 hours test under the condition of relative humidity of $90 \sim 95\%$ and temperature of $60 \pm 2^{\circ}\text{C}$, and 1 hour storage under room ambient conditions after the device is wiped with dry cloth.

4-7. Recommended reflow condition :

Temperature $^{\circ}\text{C}$



Temperature and humidity . After that , no mechanical and electrical defect should be found .

Note :	Spec. No. L-4520A
--------	----------------------

SPECIFICATIONS

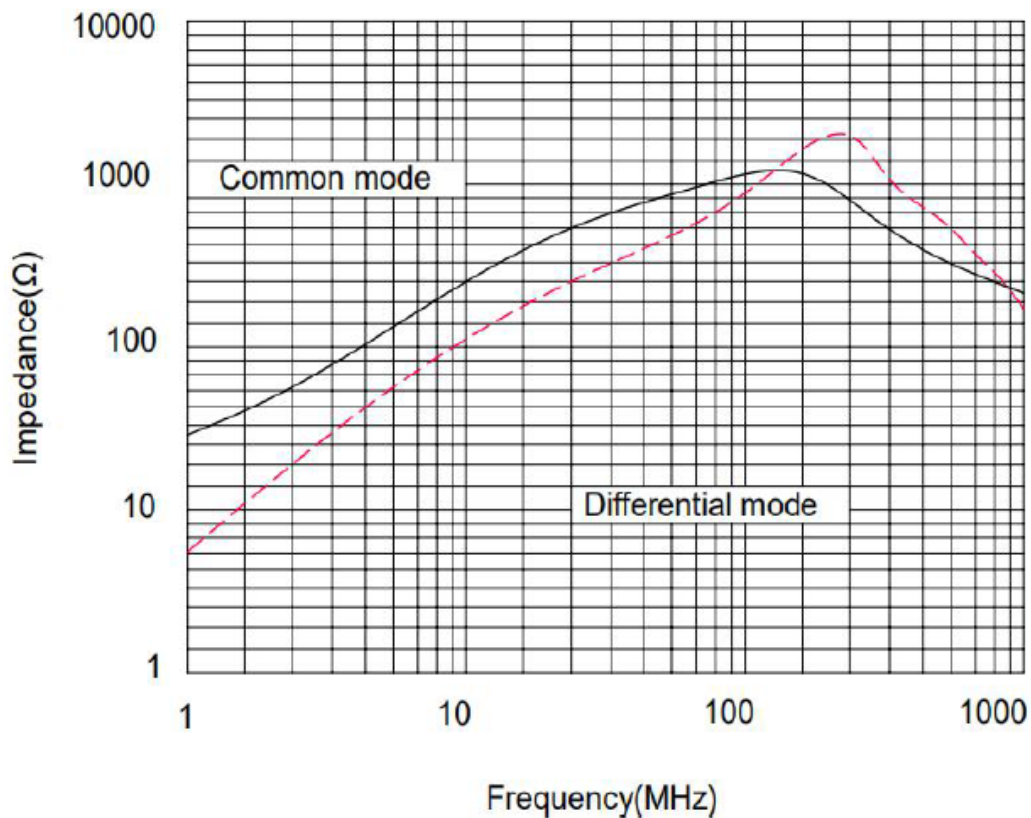
TYPE:

CCM4520A-901

5. Material list

No.	ITEM	DESCRIPTION
1	CORE	FERRITE
2	WIRE	P180 G1 180°C
3	CASE	LCP
4	Outer Electrodes	Sn99%、Ag0.3%、Cu0.7%

6. TYPICAL ELECTRICAL CHARACTERISTICS



Note :

Spec. No.

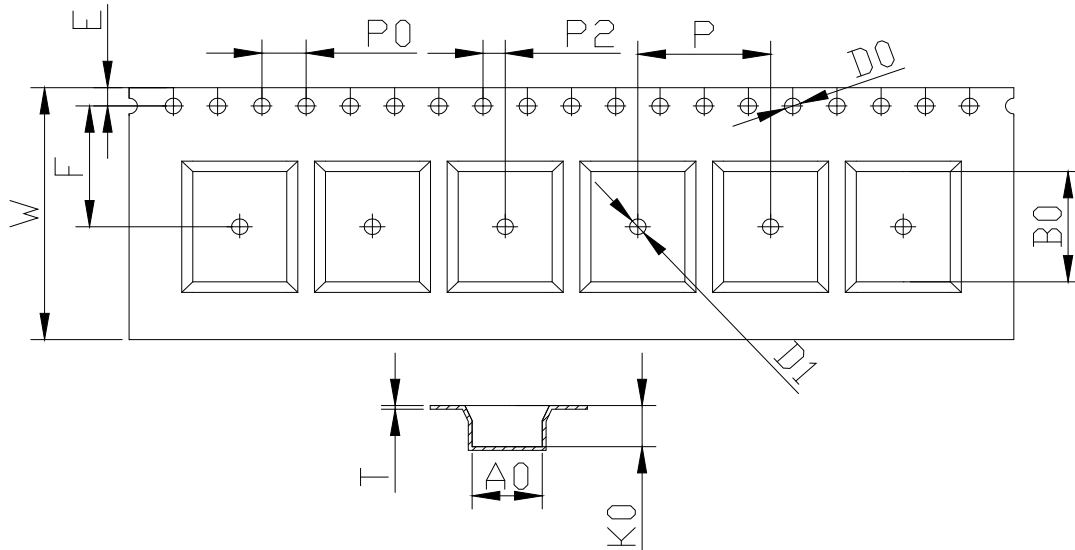
L-4520A

SPECIFICATIONS

TYPE:
CCM4520A-901

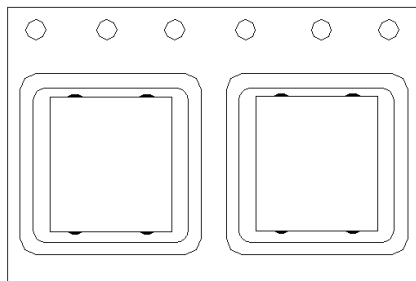
7. PACKAGING INFORMATION:

(1) Configuration



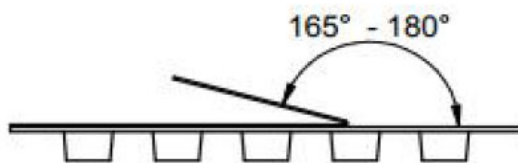
ITEM	W	A0	B0	K0	P	F	E	D0	D1	P0	P2	T
DIM	12.00	4.8	5.45	2.3	8.00	5.50	1.75	1.50	1.50	4.00	2.00	0.40
TOLE	+0.20	±0.1	±0.1	±0.1	±0.1	±0.1	±0.1	+0.1	+0.1	±0.1	±0.1	±0.05

热封编带，编带方向如图所示：



(2). Dimensions

Style	Distance	Pull-of force
12	8mm	10~120g



(3) PACKAGE SPECIFICATION:

1000PCS/Reel

Note :	Spec. No. L-4520A
--------	----------------------