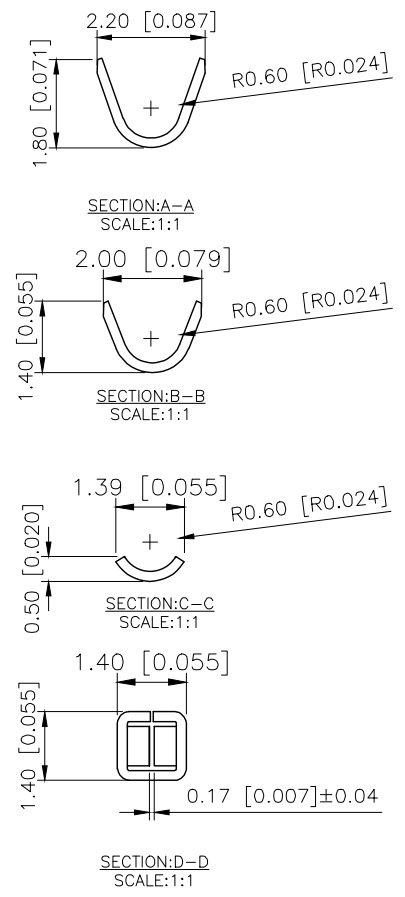
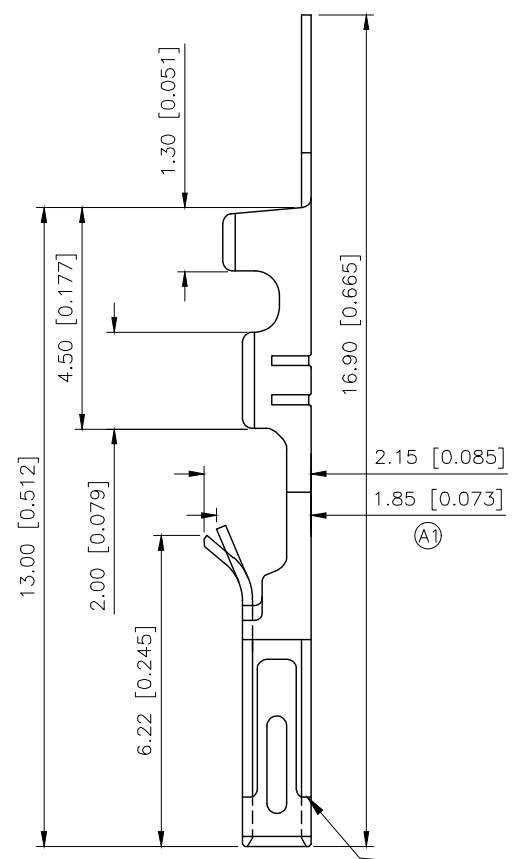
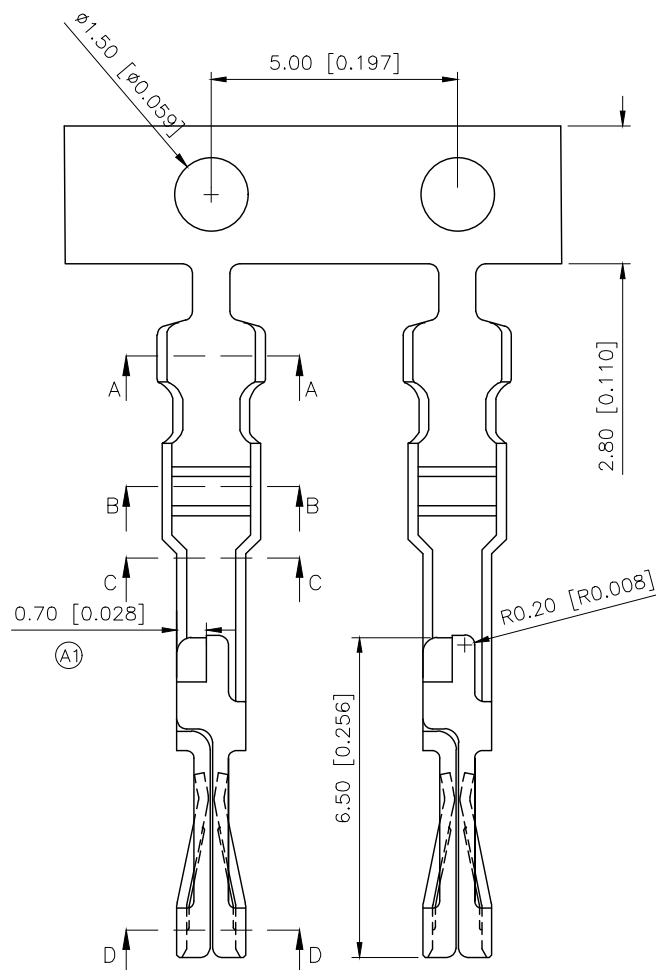


REVISIONS					
REV.	ECN NO.	LOCATION	DESCRIPTION	DATE	DESIGN
A1	N/A	(A1) X2		2024.12.17	
A2	N/A			2025.09.05	



Specifications:

Voltage rating:250V AC/DC
250V AC/DC

Current rating:1A AC/DC
1A AC/DC

Withstanding voltage:1500V AC/minute
1500V AC/

Temperature range:-40 ~+125
-40 ~+125

Insulation resistance: 1000MΩ
1000MΩ

Contact resistance:≤20mΩ MAX
≤20mΩ MAX

PART NO.:

X9555 I-P SN-B2

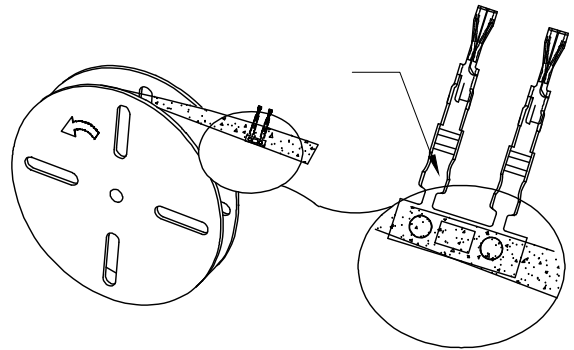
Series Number.

Category: T-terminal

Material:P-Phosphor Bronze

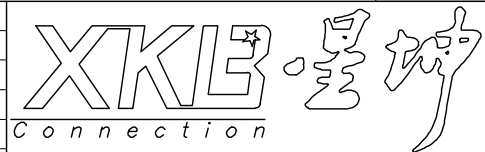
Plating:SN-Tin Plating

Other Types B2-Loose Type



X9555T-PSN-B2	Phosphor Bronze	AWG#22-28	Tin-Plated	X9555H-A1(2x14~2x32) X9555H-A2(2x14~2x32) X9555H-A3(2x14~2x32) X9555H-B(2x14~2x20) X9555H-B1(2x14~2x32) X9555H-B2(2x14~2x20) X9555H-B3(2x14~2x32)
PART NO	Material	Wire Range	Finish(Pin and Solder tab)	Suitable XKB Housing

AuGLAR	±5°
X.	±0.40
X.x	±0.30
X.xx	±0.20
X.xxx	±0.15
UNSPECIFIED TOLERANCES	



DESIGN	VIEW:	MODEL TYPE: 2.54mm Crimp Style Connector
CHECKED	UNIT: mm/in	PART NO.: X9555T-PSN-B2
APPROVED	SIZE: A4	DWG NO.: