

| REVISIONS |         |          |             |            |        |
|-----------|---------|----------|-------------|------------|--------|
| REV.      | ECN NO. | LOCATION | DESCRIPTION | DATE       | DESIGN |
| A1        | N/A     |          |             | 2024.11.11 |        |
| A2        | N/A     |          |             | 2026.03.09 |        |

**SPECIFICATIONS**

- Voltage rating:500V AC/DC
- Current rating:1A AC/DC
- Withstanding Voltage:1000V AC/minute
- Temperature range:-40°C~+125°C
- Insulation resistance: 1000MΩ
- Contact resistance ≤20mΩ
- After environment testing ≤30mΩ

PART NO.:

X9127 F V-10 B2-9T SN RE

Series No

Category:F-Female

Welding Board Angle:V-Stright 180°

Row No.Pin No:XX-04~26Pin

Plug the Pin & Special No.:

B2-have ears, no platform, both missing

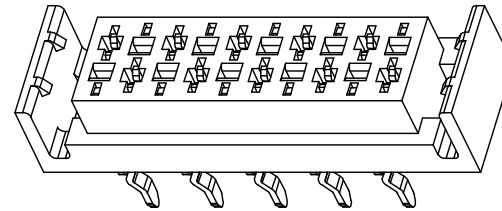
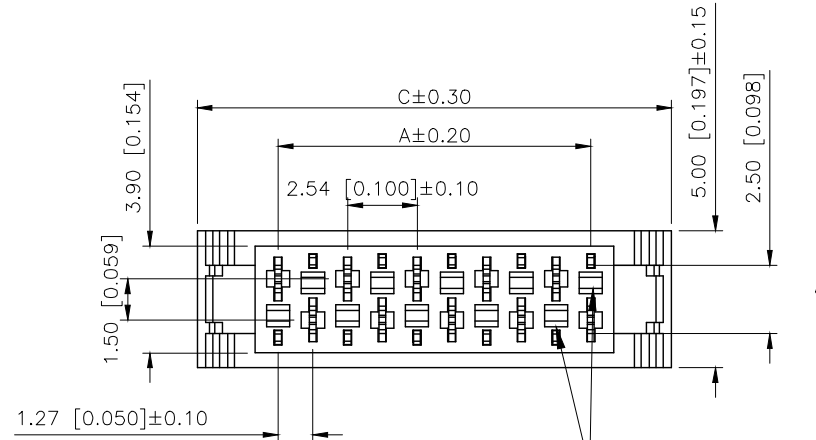
Material: 9T-Nylon 9T 94V-0

Plating Category: SN-Bright tin Plating

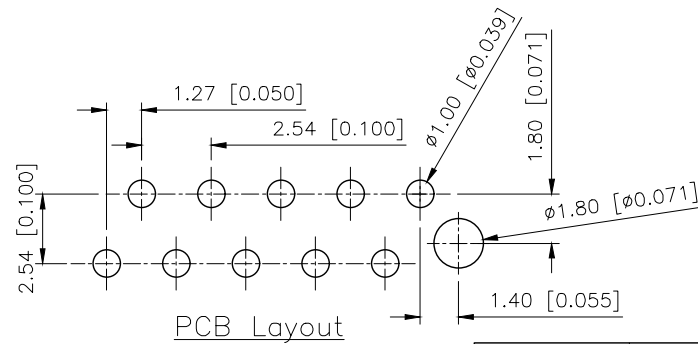
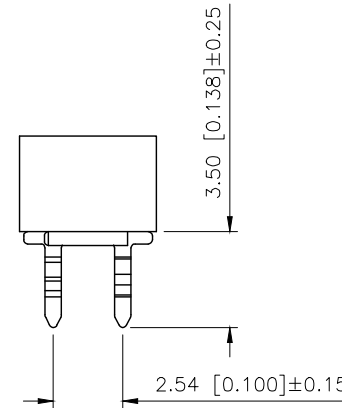
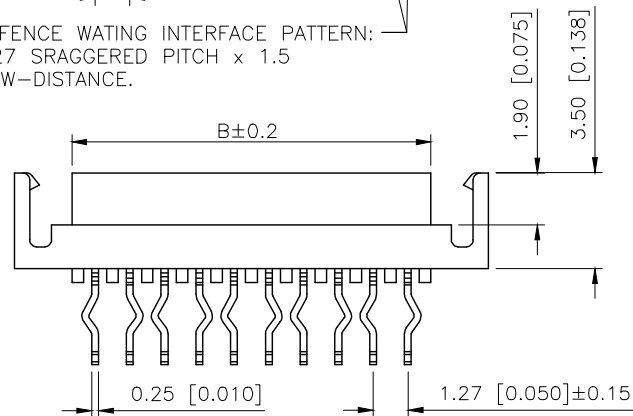
Color: RE-Red RD-purplish red

| Poles | DIM.A | DIM.B | DIM.C | Poles | DIM.A | DIM.B | DIM.C |
|-------|-------|-------|-------|-------|-------|-------|-------|
| 4     | 3.81  | 5.50  | 9.71  | 16    | 19.05 | 20.74 | 24.95 |
| 6     | 6.35  | 8.04  | 12.25 | 18    | 21.59 | 23.28 | 27.49 |
| 8     | 8.89  | 10.58 | 14.79 | 20    | 24.13 | 25.82 | 30.03 |
| 10    | 11.43 | 13.12 | 17.33 | 22    | 26.67 | 28.36 | 32.57 |
| 12    | 13.97 | 15.66 | 19.87 | 24    | 29.21 | 30.90 | 35.11 |
| 14    | 16.51 | 18.20 | 22.41 | 26    | 31.75 | 33.44 | 37.65 |

|                     |              |                  |               |             |                       |
|---------------------|--------------|------------------|---------------|-------------|-----------------------|
| X9127FV-10B2-9TSNRD | Purplish red | PA9T UL<br>94V-0 | Brass         | Tin-Plated  | X9127W                |
| X9127FV-10B2-9TSNRE | RED          |                  |               |             |                       |
| PART NO             | Color        | Material         | Material(Pin) | Finish(Pin) | Suitable XKB<br>Wafer |



REFERENCE WATING INTERFACE PATTERN:  
1.27 SRAGGERED PITCH x 1.5  
ROW-DISTANCE.



|                        |       |
|------------------------|-------|
| AuGLAR                 | ±5°   |
| X.                     | ±0.40 |
| X.x                    | ±0.30 |
| X.xx                   | ±0.20 |
| X.xxx                  | ±0.15 |
| UNSPECIFIED TOLERAUCES |       |



|          |             |   |
|----------|-------------|---|
| DESIGN   | VIEW:       | MODEL TYPE:<br>1.27mm Crimp Style Connectors( ) |
| CHECKED  | UNIT: mm/in | PART NO.:<br>X9127FV-10B2-9TSNRE                |
| APPROVED | SIZE: A4    | DWG NO.:  |