

## 1. Description

The UMW AP1501 series of regulators are monolithic integrated circuits that provide all the active functions for a step-down (buck) switching regulator, capable of driving a 3A load with excellent line and load regulation. These devices are available in fixed output voltages of 3.3V, 5V, 12V, and an adjustable output version. Requiring a minimum number of external components, these regulators are simple to use and include internal frequency compensation, and a fixed-frequency oscillator. The AP1501 series operates at a switching frequency of 150kHz thus allowing smaller sized filter components than what would be needed with lower frequency switching regulators. Available in a standard 5-lead TO-220 package with several different lead bend options, and a 5-lead TO-263 surface mount package.

## 3. Applications

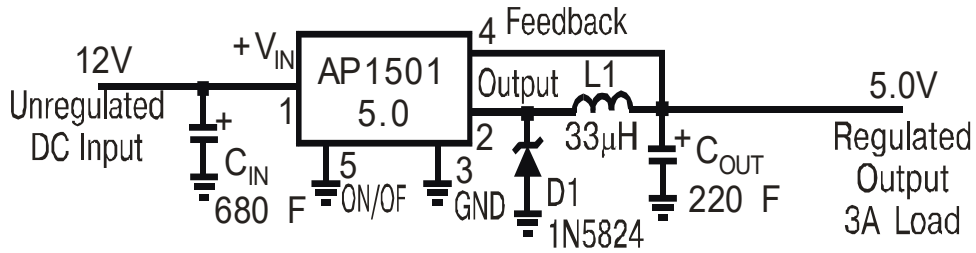
- Simple high-efficiency step-down (buck) regulator
- On-card switching regulators

## 2. Features

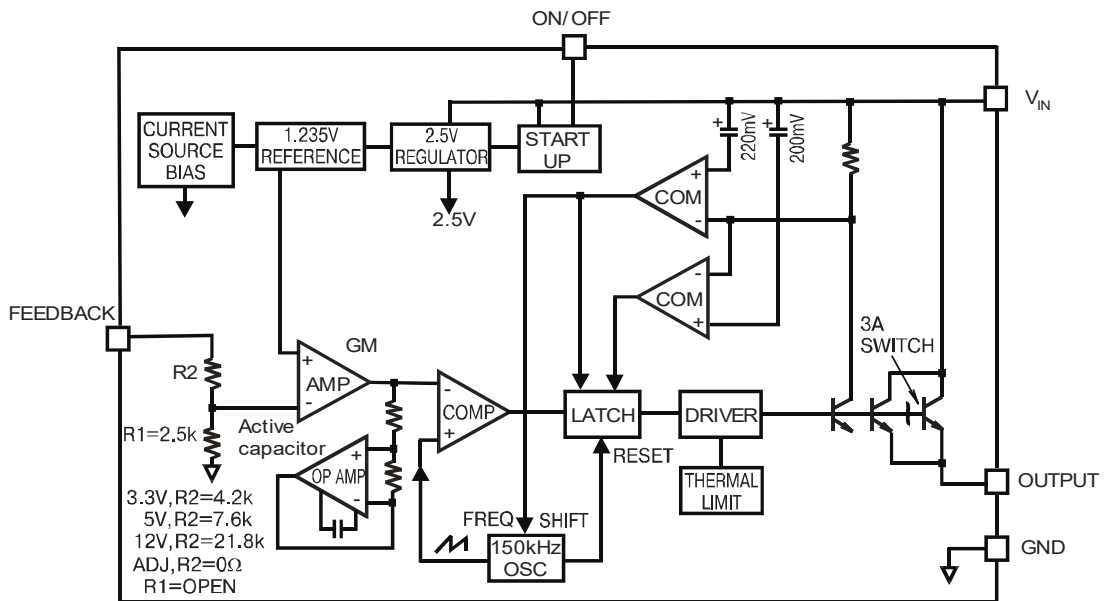
- 3.3V, 5V, 12V, and adjustable output versions
  - Adjustable version output voltage range 1.2V to 37V
  - $\pm 4\%$  max over line and load conditions
  - Available in TO-220 and TO-263 packages
  - Guaranteed 3A output load current
  - Input voltage range up to 40V
  - Requires only 4 external components
  - Excellent line and load regulation specifications
  - 150 kHz fixed frequency internal oscillator
  - TTL shutdown capability
  - Low power standby mode,  $I_Q$  typically 80 $\mu$ A
  - High efficiency
  - Uses readily available standard inductors
  - Thermal shutdown and current limit protection
- 
- Positive to negative converter



## 4. Typical Application (Fixed Output Voltage Versions)

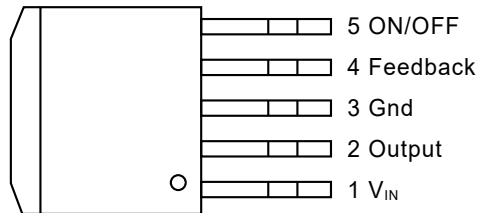


## 5. Block Diagram





## 6. Pinning information



**TO263-5L**

Name	Description	Pin Functions
$V_{IN}$	Input supply voltage	This is the positive input supply for the IC switching regulator. A suitable input bypass capacitor must be present at this pin to minimize voltage transients and to supply the switching currents needed by the regulator
Output	Switching output	Internal switch. The voltage at this pin switches between $(+V_{IN} - V_{SAT})$ and approximately $-0.5V$ , with a duty cycle of approximately $V_{OUT} / V_{IN}$ . To minimize coupling to sensitive circuitry, the PC board copper area connected to this pin should be kept to a minimum
Gnd	Ground	Circuit ground
Feedback	Output voltage feedback	Senses the regulated output voltage to complete the feedback loop
ON/OFF	ON/OFF shutdown Active is "Low" or floating	Allows the switching regulator circuit to be shut down using logic level signals thus dropping the total input supply current to approximately $80\mu A$ . Pulling this pin below a threshold voltage of approximately $1.3V$ turns the regulator on, and pulling this pin above $1.3V$ (up to a maximum of $25V$ ) shuts the regulator down. If this shutdown feature is not needed, the ON /OFF pin can be wired to the ground pin or it can be left open, in either case the regulator will be in the ON condition



## 7. Absolute Maximum Ratings (Note 1)

Parameter	Rating
Maximum Supply Voltage	45V
ON /OFF Pin Input Voltage	$-0.3 \leq V \leq +40V$
Feedback Pin Voltage	$-0.3 \leq V \leq +40V$
Output Voltage to Ground (Steady State)	-1V
Power Dissipation	Internally limited
Storage Temperature Range	$-65^{\circ}\text{C}$ to $+150^{\circ}\text{C}$
ESD Susceptibility	400V
Human Body Model (Note 2)	2kV
Vapor Phase (60 sec.)	$+215^{\circ}\text{C}$
Infrared (10 sec.)	$+245^{\circ}\text{C}$
T Package (Soldering, 10 sec.)	$+260^{\circ}\text{C}$
Maximum Junction Temperature	$+150^{\circ}\text{C}$

## 8. Operating Conditions

Parameter	Rating
Temperature Range	$-40^{\circ}\text{C} \leq T_J \leq +125^{\circ}\text{C}$
Supply Voltage	4.5V to 40V



## 9.1 Electrical Characteristics

Specifications with standard type face are for  $T_J=25^\circ\text{C}$ , and those with boldface type apply over full Operating Temperature Range

Parameter	Symbol	Conditions	Typ (Note 3)	Limit (Note 4)	Units
<b>System Parameters (Note 5) Test Circuit Figure 1 (AP1501-3.3)</b>					
Output Voltage	$V_{OUT}$	$4.7V \leq V_{IN} \leq 40V, 0.2A \leq I_{LOAD} \leq 3A$	3.3		V
				3.168/3.135	V(min)
				3.432/3.465	V(max)
Efficiency	$\eta$	$V_{IN}=12V, I_{LOAD}=3A$	73		%
<b>System Parameters (Note 5) Test Circuit Figure 1 (AP1501-5.0)</b>					
Output Voltage	$V_{OUT}$	$7V \leq V_{IN} \leq 40V, 0.2A \leq I_{LOAD} \leq 3A$	5		V
				4.800/4.750	V(min)
				5.200/5.250	V(max)
Efficiency	$\eta$	$V_{IN}=12V, I_{LOAD}=3A$	80		%
<b>System Parameters (Note 5) Test Circuit Figure 1 (AP1501-12)</b>					
Output Voltage	$V_{OUT}$	$15V \leq V_{IN} \leq 40V, 0.2A \leq I_{LOAD} \leq 3A$	12		V
				11.52/11.40	V(min)
				12.48/12.60	V(max)
Efficiency	$\eta$	$V_{IN}=12V, I_{LOAD}=3A$	90		%
<b>System Parameters (Note 5) Test Circuit Figure 1 (AP1501-ADJ)</b>					
Output Voltage	$V_{OUT}$	$4.5V \leq V_{IN} \leq 40V, 0.2A \leq I_{LOAD} \leq 3A$ $V_{OUT}$ programmed for 3V. Circuit of Figure 1.	1.23		V
				1.193/1.180	V(min)
				1.267/1.280	V(max)
Efficiency	$\eta$	$V_{IN}=12V, V_{OUT}=3V, I_{LOAD}=3A$	73		%



## 9.2 Electrical Characteristics (All Output Voltage Versions)

Specifications with standard type face are for  $T_J=25^{\circ}\text{C}$ , and those with boldface type apply over full Operating Temperature Range, Unless otherwise specified,  $V_{IN}=12\text{V}$  for the 3.3V, 5V, and Adjustable version and  $V_{IN}=24\text{V}$  for the 12V version.  $I_{LOAD}=500\text{mA}$

Parameter	Symbol	Conditions	Typ (Note 3)	Limit (Note 4)	Units
<b>Device Parameters</b>					
Feedback Bias Current	$I_B$	Adjustable Version Only $V_{FB}=1.3\text{V}$	10		nA
				20/100	nA(max)
Oscillator Frequency	$f_o$	(Note 6)	150		kHz
				127/110	kHz(min)
				173/173	kHz(max)
Saturation Voltage	$V_{SAT}$	$I_{OUT}=5\text{A}$ , No outside circuit $V_{FR}=0\text{V}$ force driver on	1.5	1.6	V
			1.5	1.7	V(max)
Max Duty Cycle (ON)	DC	(Note 8)	100		%
Min Duty Cycle (OFF)		(Note 9)	0		%
Current Limit	$I_{CL}$	Peak Current (Notes 7, 8)	4.5		A
			4	3.6	A(min)
				4.5	A(max)
Output Leakage	Output=0V	$I_L$		200	$\mu\text{A(max)}$
Current	Output=-1V				
		$V_{IN}=40\text{V}$	2	60	mA
Quiescent Current	$I_Q$	(Note 9)	5		mA
				10	mA(max)
Standby Quiescent Current	$I_{STBY}$	ON/OFF pin=5V (OFF) (Note 10)	80		$\mu\text{A}$
				200/250	$\mu\text{A(max)}$



Parameter	Symbol	Conditions	Typ (Note 3)	Limit (Note 4)	Units
Thermal Resistance	$\theta_{JC}$	TO-220 or TO-263 Package Junction to Case	2		$^{\circ}\text{C/W}$
	$\theta_{JA}$	TO-220 Package, Junction to Ambient (Note 11)	50		$^{\circ}\text{C/W}$
	$\theta_{JA}$	TO-263 Package, Junction to Ambient (Note 12)	50		$^{\circ}\text{C/W}$
	$\theta_{JA}$	TO-263 Package, Junction to Ambient (Note 13)	30		$^{\circ}\text{C/W}$
	$\theta_{JA}$	TO-263 Package, Junction to Ambient (Note 14)	20		$^{\circ}\text{C/W}$
<b>ON/OFF CONTROL Test Circuit Figure 1</b>					
ON/OFF Pin Logic Input Threshold Voltage	$V_{IH}$	Low (Regulator ON)	1.3		V
	$V_{IL}$	High (Regulator OFF)		0.6	V(max)
				2	V(min)
ON/OFF Pin Input Current	$I_H$	$V_{\text{LOGIC}}=2.5\text{V}$ (Regulator OFF)	5		$\mu\text{A}$
				15	$\mu\text{A}(\text{max})$
	$I_L$	$V_{\text{LOGIC}}=0.5\text{V}$ (Regulator ON)	0.02		$\mu\text{A}$
				5	$\mu\text{A}(\text{max})$

Note 1: Absolute Maximum Ratings indicate limits beyond which damage to the device may occur. Operating Ratings indicate conditions for which the device is intended to be functional, but do not guarantee specific performance limits. For guaranteed specifications and test conditions, see the Electrical Characteristics.

Note 2: The human body model is a 100 pF capacitor discharged through a 1.5k resistor into each pin.

Note 3: Typical numbers are at 25°C and represent the most likely norm.

Note 4: All limits guaranteed at room temperature (standard type face) and at temperature extremes (bold type face). All room temperature limits are 100% production tested. All limits at temperature extremes are guaranteed via correlation using standard Statistical Quality Control (SQC) methods. All limits are used to calculate Average Outgoing Quality Level (AOQL).

Note 5: External components such as the catch diode, inductor, input and output capacitors, and voltage programming resistors can affect switching regulator system performance. When the AP1501 is used as shown in the Figure 1 test circuit, system performance will be as shown in system parameters section of Electrical Characteristics.



Note 6: The switching frequency is reduced when the second stage current limit is activated. The amount of reduction is determined by the severity of current over-load.

Note 7: No diode, inductor or capacitor connected to output pin.

Note 8: Feedback pin removed from output and connected to 0V to force the output transistor switch ON.

Note 9: Feedback pin removed from output and connected to 12V for the 3.3V, 5V, and the ADJ. version, and 15V for the 12V version, to force the output transistor switch OFF.

Note 10:  $V_{IN}=40V$ .

Note 11: Junction to ambient thermal resistance (no external heat sink) for the TO-220 package mounted vertically, with the leads soldered to a printed circuit board with (1 oz.) copper area of approximately 1 in<sup>2</sup>.

Note 12: Junction to ambient thermal resistance with the TO-263 package tab soldered to a single printed circuit board with 0.5 in<sup>2</sup> of (1 oz.) copper area.

Note 13: Junction to ambient thermal resistance with the TO-263 package tab soldered to a single sided printed circuit board with 2.5 in<sup>2</sup> of (1 oz.) copper area.

Note 14: Junction to ambient thermal resistance with the TO-263 package tab soldered to a double sided printed circuit board with 3 in<sup>2</sup> of (1 oz.) copper area on the AP1501S side of the board, and approximately 16 in<sup>2</sup> of copper on the other side of the p-c board.



## 10.1 Typical Characteristic

<p>Figure 1: Normalized Output Voltage</p>	<p>Figure 2: Line Regulation</p>
<p>Figure 3: Efficiency</p>	<p>Figure 4: Switch Saturation Voltage</p>
<p>Figure 5: Switch Current Limit</p>	<p>Figure 6: Dropout Voltage</p>



## 10.2 Typical Characteristic

<p>Figure 7: Operating Quiescent Current</p>	<p>Figure 8: Shutdown Quiescent Current</p>
<p>Figure 9: Minimum Operating Supply Voltage</p>	<p>Figure 10: ON/OFF Threshold Voltage</p>
<p>Figure 11: ON/OFF Pin Current (Sinking)</p>	<p>Figure 12: Switching Frequency</p>



## 10.3 Typical Characteristic

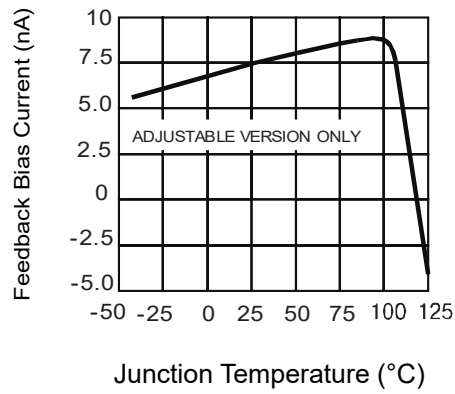


Figure 13: Feedback Pin Bias Current

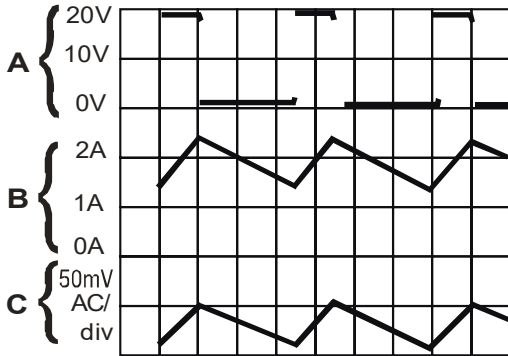


## 10.4 Typical Characteristic

Continuous Mode Switching Waveforms

$V_{IN}=20V, V_{OUT}=5V, I_{LOAD}=2A$

$L=32\mu H, C_{OUT}=220\mu F, C_{OUT}ESR=50m\Omega$



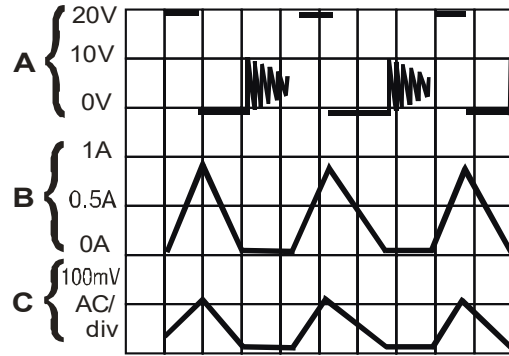
A: Output Pin Voltage, 10V/ div  
 B: Inductor Current 1A/ div  
 C: Output Ripple Voltage, 50mV/ div

**Horizontal Time Base: 2 $\mu$ s/div**

Continuous Mode Switching Waveforms

$V_{IN}=20V, V_{OUT}=5V, I_{LOAD}=500mA$

$L=10\mu H, C_{OUT}=330\mu F, C_{OUT}ESR=45m\Omega$



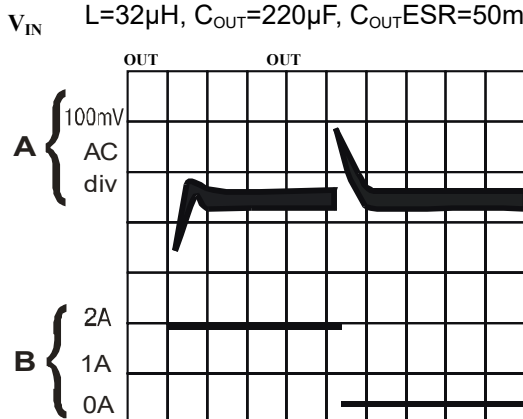
A: Output Pin Voltage, 10V/div  
 B: Inductor Current 1A/ div  
 C: Output Ripple Voltage, 100mV/div

**Horizontal Time Base: 2 $\mu$ s/div**

Load Transient Response for Continuous Mode

$V_{IN}=20V, V_{OUT}=5V, I_{LOAD}=500mA$  to 2A

$L=32\mu H, C_{OUT}=220\mu F, C_{OUT}ESR=50m\Omega$



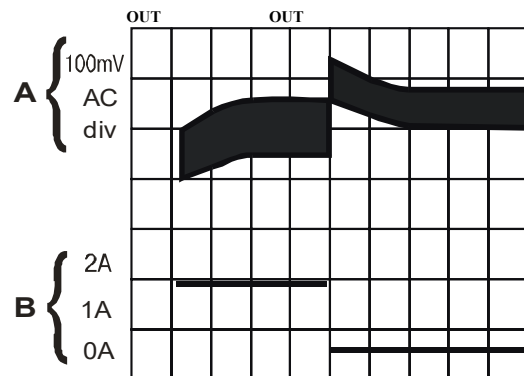
A: Output Voltage, 100mV/div.(AC)  
 B: 500mA to 2A Load Pulse

**Horizontal Time Base: 100 $\mu$ s/div**

Load Transient Response for Continuous Mode

$V_{IN}=20V, V_{OUT}=5V, I_{LOAD}=500mA$  to 2A

$L=10\mu H, C_{OUT}=330\mu F, C_{OUT}ESR=45m\Omega$

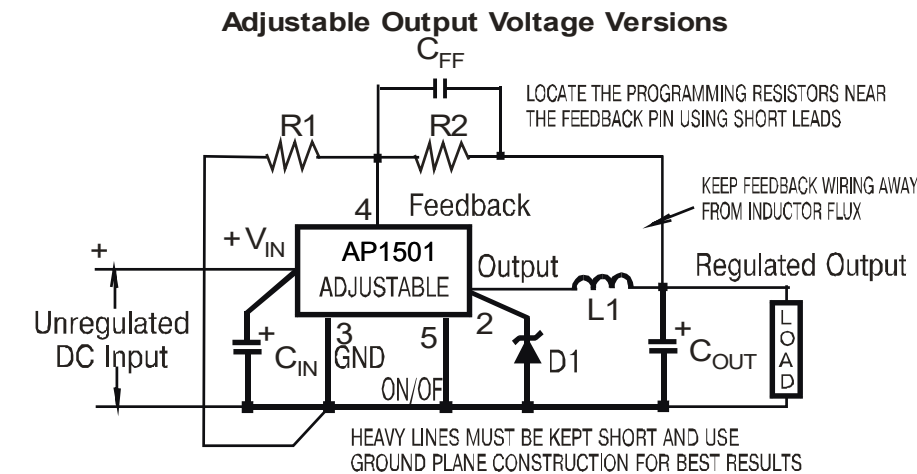
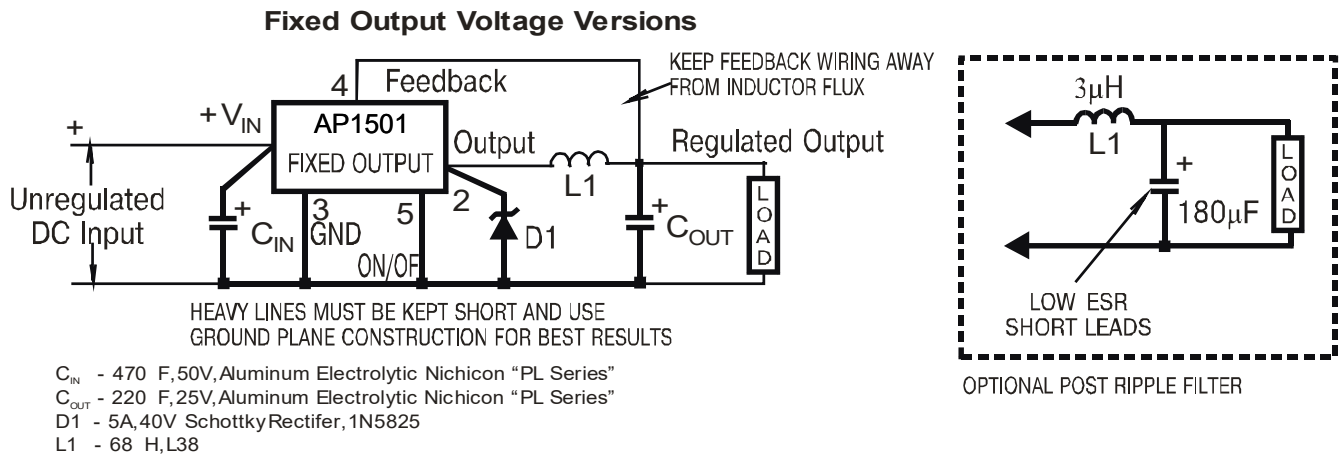


A: Output Voltage, 100mV/div. (AC)  
 B: 500mA to 2A Load Pulse

**Horizontal Time Base: 200 $\mu$ s/div**



## 11. Test Circuit And Layout Guidelines



$$V_{OUT} = V_{REF} (1 + R_2/R_1)$$

where  $V_{REF} = 1.23V$

$$R_2 = R_1 (V_{OUT}/V_{REF} - 1)$$

Select R1 to be approximately 1kΩ, use a 1% resistor for best stability

$C_{IN}$  - 470µF, 50V, Aluminum Electrolytic Nichicon "PL Series"

$C_{OUT}$  - 220µF, 35V, Aluminum Electrolytic Nichicon "PL Series"

D1 - 5A, 40V Schottky Rectifier, 1N5825

L1 - 68µH, L38

R1 - 1kΩ, 1%

$C_{FF}$  - see Application Information Section

Figure 1. Standard Test Circuits and Layout Guides



As in any switching regulator, layout is very important. Rapidly switching currents associated with wiring inductance can generate voltage transients which can cause problems. For minimal inductance and ground loops, the wires indicated by heavy lines should be wide printed circuit traces and should be kept as short as possible. For best results, external components should be located as close to the switcher IC as possible using ground plane construction or single point grounding. If open core inductors are used, special care must be taken as to the location and positioning of this type of inductor. Allowing the inductor flux to intersect sensitive feedback, IC groundpath and COUT wiring can cause problems. When using the adjustable version, special care must be taken as to the location of the feedback resistors and the associated wiring. Physically locate both resistors near the IC, and route the wiring away from the inductor, especially an open core type of inductor.

## 12.AP1501 Series Buck Regulator Design Procedure (Fixed Output)

### Procedure (Fixed Output Voltage Version)

#### Given:

$V_{OUT}$ =Regulated Output Voltage (3.3V, 5V or 12V)

$V_{IN(max)}$ =Maximum DC Input Voltage

$I_{LOAD(max)}$ =Maximum Load Current

#### 1. Inductor Selection (L1)

- A. Select the correct inductor value selection guide from Figures Figure 4, Figure 5, or Figure 6. (Output voltages of 3.3V, 5V, or 12V respectively.) For all other voltages, see the design procedure for the adjustable version.
- B. From the inductor value selection guide, identify the inductance region intersected by the Maximum Input Voltage line and the Maximum Load Current line. Each region is identified by an inductance value and an inductor code (LXX).
- C. Select an appropriate inductor from the four manufacturer's part numbers listed in Figure 8.

#### 2. Output Capacitor Selection ( $C_{OUT}$ )

- A. In the majority of applications, low ESR (Equivalent Series Resistance) electrolytic capacitors between 82 $\mu$ F and 820 $\mu$ F and low ESR solid tantalum capacitors between 10 $\mu$ F and 470 $\mu$ F provide the best results. This capacitor should be located close to the IC using short capacitor leads and short copper traces. Do not use capacitors larger than 820 $\mu$ F.



B. To simplify the capacitor selection procedure, refer to the quick design component selection table shown in Figure 2. This table contains different input voltages, output voltages, and load currents, and lists various inductors and output capacitors that will provide the best design solutions.

C. The capacitor voltage rating for electrolytic capacitors should be at least 1.5 times greater than the output voltage, and often much higher voltage ratings are needed to satisfy the low ESR requirements for low output ripple voltage.

### 3. Catch Diode Selection (D1)

A. The catch diode current rating must be at least 1.3 times greater than the maximum load current. Also, if the power supply design must withstand a continuous output short, the diode should have a current rating equal to the maximum current limit of the AP1501. The most stressful condition for this diode is an overload or shorted output condition.

B. The reverse voltage rating of the diode should be at least 1.25 times the maximum input voltage.

C. This diode must be fast (short reverse recovery time) and must be located close to the AP1501 using short leads and short printed circuit traces. Because of their fast switching speed and low forward voltage drop, Schottky diodes provide the best performance and efficiency, and should be the first choice, especially in low output voltage applications. Ultra-fast recovery, or High-Efficiency rectifiers also provide good results. Ultra-fast recovery diodes typically have reverse recovery times of 50 ns or less. Rectifiers such as the 1N5400 series are much too slow and should not be used.

### 4. Input Capacitor (C<sub>IN</sub>)

A low ESR aluminum or tantalum bypass capacitor is needed between the input pin and ground pin to prevent large voltage transients from appearing at the input. This capacitor should be located close to the IC using short leads. In addition, the RMS current rating of the input capacitor should be selected to be at least 1/2 the DC load current. The capacitor manufacturers data sheet must be checked to assure that this current rating is not exceeded. The curve shown in Figure 9 shows typical RMS current ratings for several different aluminum electrolytic capacitor values. For an aluminum electrolytic, the capacitor voltage rating should be approximately 1.5 times the maximum input voltage. The tantalum capacitor voltage rating should be 2 times the maximum input voltage and it is recommended that they be surge current tested by the manufacturer. Use caution when using ceramic capacitors for input bypassing, because it may cause severe ringing at the V<sub>IN</sub> pin.



### Example (Fixed Output Voltage Version)

#### Given:

$$V_{OUT}=5V$$

$$V_{IN(max)}=12V$$

$$I_{LOAD(max)}=3A$$

#### 1. Inductor Selection (L1)

A. Use the inductor selection guide for the 5V version shown in Figure 5.

B. From the inductor value selection guide shown in Figure 5, the inductance region intersected by the 12V horizontal line and the 3A vertical line is 33  $\mu$ H, and the inductor code is L40.

C. The inductance value required is 33  $\mu$ H. From the table in Figure 8, go to the L40 line and choose an inductor part number from any of the four manufacturers shown. (In most in-stance, both through hole and surface mount inductors are available.)

#### 2. Output Capacitor Selection (C<sub>OUT</sub>)

A. See section on output capacitors in application information section.

B. From the quick design component selection table shown in Figure 2, locate the 5V output voltage section. In the load current column, choose the load current line that is closest to the current needed in your application, for this example, use the 3A line. In the maximum input voltage column, select the line that covers the input voltage needed in your application, in this example, use the 15V line. Continuing on this line are recommended inductors and capacitors that will provide the best overall performance.

The capacitor list contains both through hole electrolytic and surface mount tantalum capacitors from four different capacitor manufacturers. It is recommended that both the manufacturers and the manufacturer's series that are listed in the table be used.

In this example aluminum electrolytic capacitors from several different manufacturers are available with the range of ESR numbers needed. 330  $\mu$ F 35V Panasonic HFQ Series 330  $\mu$ F 35V Nichicon PL Series.

C. For a 5V output, a capacitor voltage rating at least 7.5V or more is needed. But even a low ESR, switching grade, 220 $\mu$ F 10V aluminum electrolytic capacitor would exhibit approximately 225 mW of ESR (see the curve in Figure 14 for the ESR vs voltage rating). This amount of ESR would result in relatively high output ripple voltage. To reduce the ripple to 1% of the output voltage, or less, a capacitor with a higher value or with a higher voltage rating (lower ESR) should be selected. A 16V or 25V capacitor will reduce the ripple voltage by approximately half



### 3. Catch Diode Selection (D1)

A. Refer to the table shown in Figure 11. In this example, a 5A, 20V, 1N5823 Schottky diode will provide the best performance, and will not be overstressed even for a shorted output.

### 4. Input Capacitor ( $C_{IN}$ )

The important parameters for the Input capacitor are the input voltage rating and the RMS current rating. With a nominal input voltage of 12V, an aluminum electrolytic capacitor with a voltage rating greater than 18V ( $1.5 \times V_{IN}$ ) would be needed. The next higher capacitor voltage rating is 25V.

The RMS current rating requirement for the input capacitor in a buck regulator is approximately 1/2 the DC load current. In this example, with a 3A load, a capacitor with a RMS current rating of at least 1.5A is needed. The curves shown in Figure 9 can be used to select an appropriate input capacitor. From the curves, locate the 35V line and note which capacitor values have RMS current ratings greater than 1.5A. A 680 $\mu$ F/35V capacitor could be used. For a through hole design, a 680 $\mu$ F/35V electrolytic capacitor (Panasonic HFQ series or Nichicon PL series or equivalent) would be adequate. other types or other manufacturers capacitors can be used provided the RMS ripple current ratings are adequate.

For surface mount designs, solid tantalum capacitors can be used, but caution must be exercised with regard to the capacitor surge current rating. The TPS series available from AVX, and the 593D series from Sprague are both surge current tested.



## 13.Series Buck Regulator Design Procedure (Fixed Output) (Continued)

Conditions			Inductor		Output Capacitor			
					Through Hole Electrolytic		Surface Mount Tantalum	
Output Voltage (V)	Load Current (A)	Max Input Voltage (V)	Inductance (μH)	Inductor (#)	Panasonic HFQ Series (μF/V)	Nichicon PL Series (μF/V)	AVX TPS Series (μF/V)	Sprague 595D Series (μF/V)
3.3	3	5	22	L41	470/25	560/16	330/6.3	390/6.3
		7	22	L41	560/35	560/35	330/6.3	390/6.3
		10	22	L41	680/35	680/35	330/6.3	390/6.3
	2	40	33	L40	560/35	470/35	330/6.3	390/6.3
		6	22	L33	470/25	470/35	330/6.3	390/6.3
		10	33	L32	330/35	330/35	330/6.3	390/6.3
5	3	40	47	L39	330/35	270/50	220/10	330/10
		8	22	L41	470/25	560/16	220/10	330/10
		10	22	L41	560/25	560/25	220/10	330/10
	2	15	33	L40	330/35	330/35	220/10	330/10
		9	22	L33	470/25	560/16	220/10	330/10
		20	68	L38	180/35	180/35	100/10	270/10
12	3	40	68	L38	180/35	180/35	100/10	270/10
		15	22	L41	470/25	470/25	100/16	180/16
		18	33	L40	330/25	330/25	100/16	180/16
	2	30	68	L44	180/25	180/25	100/16	120/20
		40	68	LA4	180/35	180/35	100/16	120/20
		15	33	L32	330/25	330/25	100/16	180/16
2	20	68	L38	180/25	180/25	100/16	120/20	
	40	150	L42	82/25	82/25	68/20	68/25	

Figure 2. AP1501 Fixed Voltage Quick Design Component Selection Table



## 14.AP1501 Series Buck Regulator Design Procedure (Adjustable Output)

### Procedure (Adjustable Output Voltage Version)

#### Given:

$V_{OUT}$ =Regulated Output Voltage

$V_{IN(max)}$ =Maximum Input Voltage

$I_{LOAD(max)}$ =Maximum Load Current

$F$ =Switching Frequency (Fixed at a nominal 150 kHz). 1. Programming Output Voltage (Selecting  $R_1$  and  $R_2$ , as shown in Figure 1) Use the following formula to select the appropriate resistor values.

$$V_{OUT}=V_{REF}(1+R_2/R_1) \text{ where } V_{REF}=1.23V$$

Select a value for  $R_1$  between  $240\Omega$  and  $1.5k\Omega$ . The lower resistor values minimize noise pickup in the sensitive feedback pin. (For the lowest temperature coefficient and the best stability with time, use 1% metal film resistors.)

where  $V_{SAT}$ =internal switch saturation voltage= $1.16V$  and  $V_D$ =diode forward voltage drop= $0.5V$

B. Use the  $E \cdot T$  value from the previous formula and match it with the  $E \cdot T$  number on the vertical axis of the Inductor Value Selection Guide shown in Figure 7.

C. on the horizontal axis, select the maximum load current.

D. Identify the inductance region intersected by the  $E \cdot T$  value and the Maximum Load Current value. Each region is identified by an inductance value and an inductor code (LXX).

E. Select an appropriate inductor from the four manufacturer's part numbers listed in Figure 8.

### 3. Output Capacitor Selection ( $C_{OUT}$ )

A. In the majority of applications, low ESR electrolytic or solid tantalum capacitors between  $82 \mu F$  and  $820 \mu F$  provide the best results. This capacitor should be located close to the IC using short capacitor leads and short copper traces. Do not use capacitors larger than  $820 \mu F$ .

B. To simplify the capacitor selection procedure, refer to the quick design table shown in Figure 3. This table contains different output voltages, and lists various output capacitors that will provide the best design solutions.

C. The capacitor voltage rating should be at least 1.5 times greater than the output voltage, and often much higher voltage ratings are needed to satisfy the low ESR requirements needed for low output ripple voltage.



#### 4. Feedforward Capacitor ( $C_{FF}$ ) (See Figure 1)

For output voltages greater than approximately 10V, an additional capacitor is required. The compensation capacitor is typically between 100 pF and 33 nF, and is wired in parallel with the output voltage setting resistor, R2. It provides additional stability for high output voltages, low input-output voltages, and/or very low ESR output capacitors, such as solid tantalum capacitors.

$$C_{FF} = \frac{1}{31 \times 10^3 \times R_2}$$

This capacitor type can be ceramic, plastic, silver mica, etc. (Because of the unstable characteristics of ceramic capacitors made with Z5U material, they are not recommended.)



### Example (Adjustable Output Voltage Version)

#### Given:

$$V_{OUT}=20V$$

$$V_{IN(max)}=28V$$

$$I_{LOAD(max)}=3A$$

F=Switching Frequency (Fixed at a nominal 150 kHz).

1. Programming Output Voltage (Selecting  $R_1$  and  $R_2$ , as shown in Figure 1) Select  $R_1$  to be 1 k $\Omega$ , 1%. Solve for  $R_2$

$$R_2=R_1\left(\frac{V_{OUT}}{V_{REF}}-1\right)=1k\left(\frac{20V}{1.23V}-1\right)$$

$$R_2=1k(16.26-1)=15.26k, \text{ closest 1\% value is } 15.4k\Omega, R_2=15.4k\Omega.$$

#### 2. Inductor Selection (L1)

A. Calculate the inductor Volt • microsecond constant ( $E \cdot T$ ),

$$E \cdot T=(28-20-1.16) \cdot \frac{20+0.5}{28-1.16+0.5} \cdot \frac{1000}{150} \text{ (V} \cdot \mu\text{s)}$$

$$E \cdot T=(6.84) \cdot \frac{20.5}{27.34} \cdot 6.67 \text{ (V} \cdot \mu\text{s)}=34.2 \text{ (V} \cdot \mu\text{s)}$$

B.  $E \cdot T=34.2 \text{ (V} \cdot \mu\text{s)}$

C.  $I_{LOAD(max)}=3A$

D. From the inductor value selection guide shown in Figure 7, the inductance region intersected by the 34 (V• $\mu$ s) horizontal line and the 3A vertical line is 47  $\mu$ H, and the inductor code is L39.

E. From the table in Figure 8, locate line L39, and select an inductor part number from the list of manufacturers part numbers.



### 3. Output Capacitor Selection ( $C_{OUT}$ )

B. From the quick design table shown in Figure 3, locate the output voltage column. From that column, locate the output voltage closest to the output voltage in your application. In this example, select the 24V line. Under the output capacitor section, select a capacitor from the list of through hole electrolytic or surface mount tantalum types from four different capacitor manufacturers. It is recommended that both the manufacturers and the manufacturers series that are listed in the table be used.

In this example, through hole aluminum electrolytic capacitors from several different manufacturers are available.  
220  $\mu$ F/35V Panasonic HFQ Series 150  $\mu$ F/35V Nichicon PL Series.

C. For a 20V output, a capacitor rating of at least 30V or more is needed. In this example, either a 35V or 50V capacitor would work. A 35V rating was chosen, although a 50V rating could also be used if a lower output ripple voltage is needed. Other manufacturers or other types of capacitors may also be used, provided the capacitor specifications (especially the 100 kHz ESR) closely match the types listed in the table. Refer to the capacitor manufacturers data sheet for this information.

### 4. Feedforward Capacitor ( $C_{FF}$ )

The table shown in Figure 3 contains feed forward capacitor values for various output voltages. In this example, a 560pF capacitor is needed.



## 15.Series Buck Regulator Desing Procedure (Adjustable Output)

Output Voltage (V)	Through Hole Output Capacitor			Surface Mount Output Capacitor		
	Panasonic HFQ Series ( $\mu\text{F}/\text{V}$ )	Nichicon PL Series ( $\mu\text{F}/\text{V}$ )	Feedforward capacitor	AVX TPS Series ( $\mu\text{F}/\text{V}$ )	Sprague 595D Series ( $\mu\text{F}/\text{V}$ )	Feedforward Capacitor
2	820/35	820/35	33nF	330/6.3	470/4	33nF
4	560/35	470/35	10nF	330/6.3	390/6.3	10nF
6	470/25	470/25	3.3nF	220/10	330/10	3.3nF
9	330/25	330/25	1.5nF	100/16	180/16	1.5nF
12	330/25	330/25	1nF	100/16	180/16	1nF
15	220/35	220/35	680pF	68/20	120/20	680pF
24	220/35	150/35	560pF	33/25	33/25	220pF
28	100/50	100/50	390pF	10/35	15/50	220pF

Figure 3. Output Capacitor and Feedforward Capacitor Selection Table



## 16.AP1501 Series Buck Regulator Design Procedure

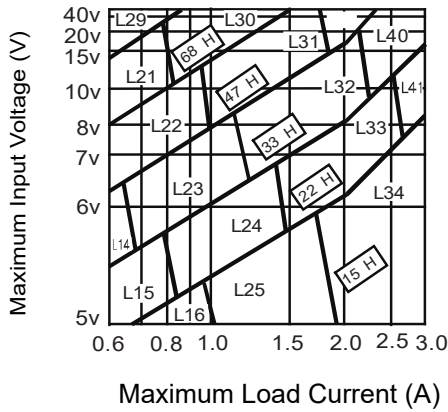


Figure 4: AP1501-3.3

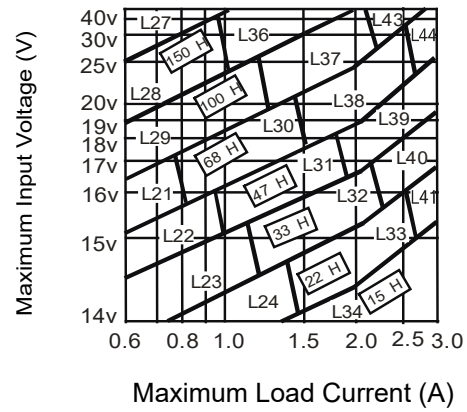


Figure 5: AP1501-12

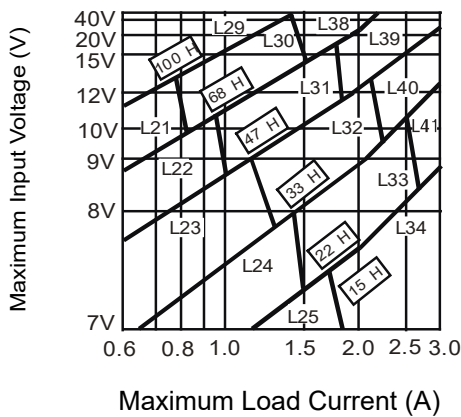


Figure 6: AP1501-5.0

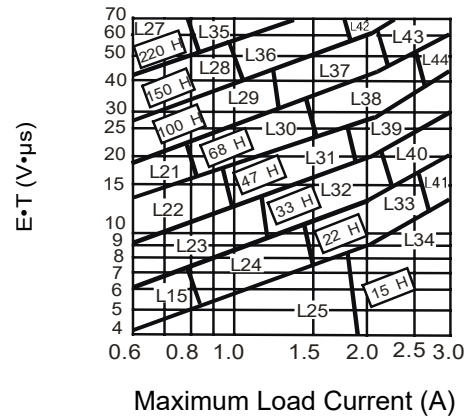


Figure 7: AP1501-ADJ

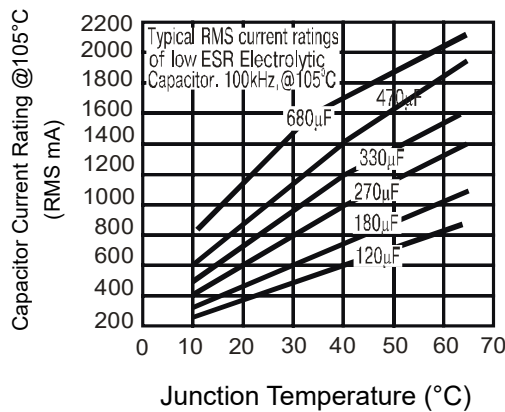


Figure 8: RMS Current Ratings for Low ESR Electrolytic Capacitors (typical)



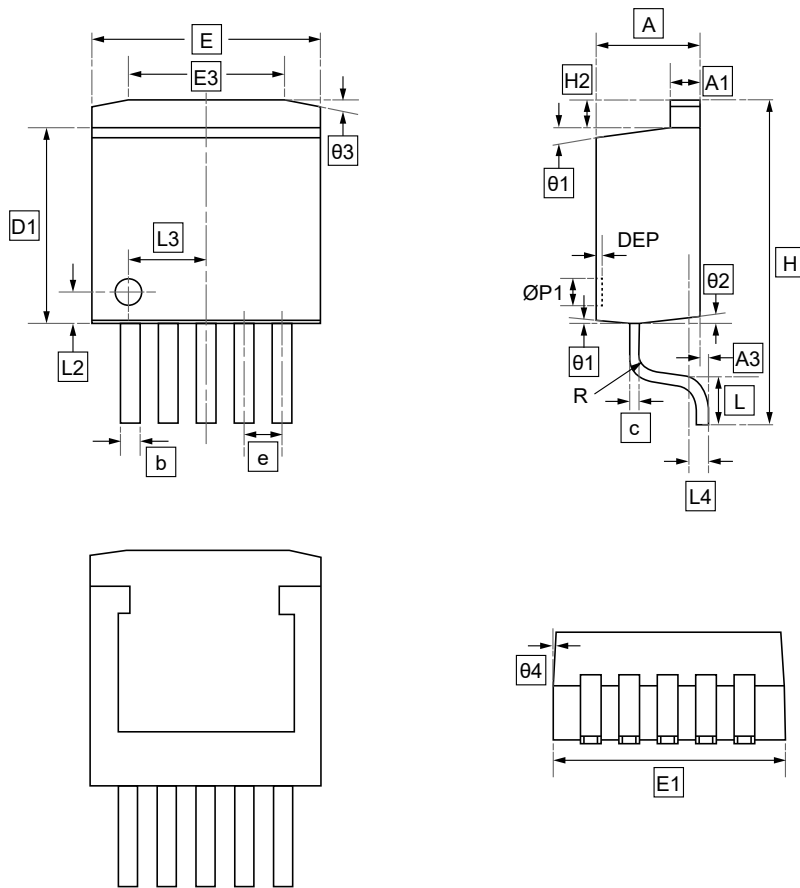
## 17.AP1501 Series Buck Regulator Design Procedure (Continued)

	Inductance (μH)	Current (A)	Schott		Renco		Pulse Engineering		Coilcraft
			Through Hole	Surface Mount	Through Hole	Surface Mount	Through Hole	Surface Mount	Surface Mount
L15	22	0.99	67148350	67148460	RL-1284-22-43	RL1500-22	PE-53815	PE-53815-S	DO3308-223
L21	68	0.99	67144070	67144450	RL-5471-5	RL1500-68	PE-53821	PE-53821-S	DO3316-683
L22	47	1.17	67144080	67144460	RL-5471-6	-	PE-53822	PE-53822-S	DO3316-473
L23	33	1.40	67144090	67144470	RL-5471-7	-	PE-53823	PE-53823-S	DO3316-333
L24	22	1.70	67148370	67148480	RL1283-22-43	-	PE-53824	PE-53825-S	DO3316-223
L25	15	2.10	67148380	67148490	RL-1283-15-43	-	PE-53825	PE-53824-S	DO3316-153
L26	330	0.80	67144100	67144480	RL-5471-1	-	PE-53826	PE-53826-S	DO5022P-334
L27	220	1.00	67144110	67144490	RL-5471-2	-	PE-53827	PE-53827-S	DO5022P-224
L28	150	1.20	67144120	67144500	RL-5471-3	-	PE-53828	PE-53828-S	DO5022P-154
L29	100	1.47	67144130	67144510	RL-5471-4	-	PE-53829	PE-53829-S	DO5022P-104
L30	68	1.78	67144140	67144520	RL-5471-5	-	PE-53830	PE-53830-S	DO5022P-683
L31	47	2.20	67144150	67144530	RL-5471-6	-	PE-53831	PE-53831-S	DO5022P-473
L32	33	2.50	67144160	67144540	RL-5471-7	-	PE-53932	PE-53932-S	DO5022P-333
L33	22	3.10	67148390	67148500	RL-1283-22-43	-	PE-53933	PE-53933-S	DO5022P-223
L34	15	3.40	67148400	67148790	RL-1283-15-43	-	PE-53934	PE-53934-S	DO5022P-153
L35	220	1.70	67144170	-	RL-5473-1	-	PE-53935	PE-53935-S	
L36	150	2.10	67144180	-	RL-5473-4	-	PE-54036	PE-54036-S	
L37	100	2.50	67144190	-	RL-5472-1	-	PE-54037	PE-54037-S	
L38	68	3.10	67144200	-	RL-5472-2	-	PE-54038	PE-54038-S	
L39	47	3.50	67144210		RL-5472-3	-	PE-54039	PE-54039-S	
L40	33	3.50	67144220	67148290	RL-5472-4	-	PE-54040	PE-54040-S	
L41	22	3.50	67144230	67148300	RL-5472-5	-	PE-54041	PE-54041-S	
L42	150	2.70	67148410	-	RL-5473-4	-	PE-54042	PE-54042-S	
L43	100	3.40	67144240	-	RL-5473-2	-	PE-54043		
L44	68	3.40	67144250	-	RL-5473-3	-	PE-54044		

Figure 8. Inductor Manufacturers Part Numbers



## 18.TO263-5 Package Outline Dimensions



### DIMENSIONS (mm are the original dimensions)

Symbol	A	A1	A3	b	c	D1	E	E1	E3	e	H	H2
Min	4.45	1.22	0	0.71	0.38	8.38	9.91	10.03	6.61	1.70	-	-
Max	4.70	1.32	0.15	0.97	0.76	8.89	10.39	10.54	7.11	BSC	14.35	1.27

Symbol	L	L2	L3	L4	Øp1	R	θ1	θ2	θ3	θ4	DEP
Min	1.98	1.47	3.40	0.76	1.07	-	7°	3°	7°	3°	0.10
Max	TYP	REF	REF	TYP	1.32	0.76	TYP	TYP	13°	TYP	0.25



## 19. Ordering Information

UMW yyww  
 AP1501  
 -12 P+  
 ○

yy: Year Code  
 ww: Week Code

Order Code	Marking	Package	Base QTY	Delivery Mode
UMW AP1501-12	AP1501	TO-263	800	Tape and reel
UMW AP1501-3.3	AP1501	TO-263	800	Tape and reel
UMW AP1501-5.0	AP1501	TO-263	800	Tape and reel
UMW AP1501-ADJ	AP1501	TO-263	800	Tape and reel



## **20.Disclaimer**

---

UMW reserves the right to make changes to all products, specifications. Customers should obtain the latest version of product documentation and verify the completeness and currency of the information before placing an order.

When applying our products, please do not exceed the maximum rated values, as this may affect the reliability of the entire system. Under certain conditions, any semiconductor product may experience faults or failures. Buyers are responsible for adhering to safety standards and implementing safety measures during system design, prototyping, and manufacturing when using our products to prevent potential failure risks that could lead to personal injury or property damage.

Unless explicitly stated in writing, UMW products are not intended for use in medical, life-saving, or life-sustaining applications, nor for any other applications where product failure could result in personal injury or death. If customers use or sell the product for such applications without explicit authorization, they assume all associated risks.

When reselling, applying, or exporting, please comply with export control laws and regulations of China, the United States, the United Kingdom, the European Union, and other relevant countries, regions, and international organizations.

This document and any actions by UMW do not grant any intellectual property rights, whether express or implied, by estoppel or otherwise. The product names and marks mentioned herein may be trademarks of their respective owners.