

## SUMMARY

### # Wires



*Image is for illustrative purpose only*

|                  |                         |
|------------------|-------------------------|
| Series           | 00                      |
| Termination type | No contacts / Accessory |
| IP rating        | 0                       |
| AWG wire size    | 0.00 - 0.00             |
| Cable Ø          | 0.00 - 0.00 mm          |
| Status           | Active                  |

### Download

[Request a quote](#)

[Catalog](#)

## TECHNICAL DETAILS

### Mechanics

|                   |  |
|-------------------|--|
| Shell Style/Model | GRA*: Insulating washer  |
| Keying            | No keying  |
| Housing Material  | PEEK (Polyetheretherketone) shell and collet nut, nickel plated [SAE AMS QQ N 290] brass latch sleeve and mid pieces |
| Weight            | .06 g  |

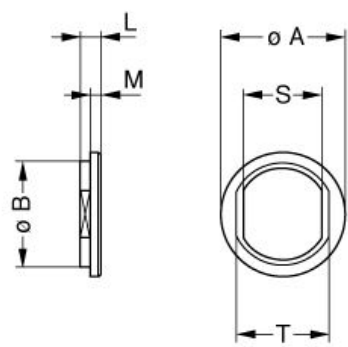
### Performance

|               |
|---------------|
| Configuration |
| Insulator     |
| Rated Current |

### Others

LEMO products and services are provided "as is". LEMO makes no warranties or representations with regard to LEMO product & services or use of them, express, implied or statutory, including for accuracy, completeness, or security. The user is fully responsible for his products and applications using LEMO components.

# DRAWINGS



No keying

## Dimensions

|     | A    | B    | L    | M    | S    | T    |
|-----|------|------|------|------|------|------|
| mm. | 10   | 8.8  | 1.8  | 1    | 6.4  | 8    |
| in. | 0,39 | 0,35 | 0,07 | 0,04 | 0,25 | 0,31 |

# RECOMMENDED BY LEMO

## Tools

LEMO products and services are provided “as is”. LEMO makes no warranties or representations with regard to LEMO product & services or use of them, express, implied or statutory, including for accuracy, completeness, or security. The user is fully responsible for his products and applications using LEMO components.