



DEUTSCH | STRIKE

TE Internal #: SRK06-MDA-32A-001

Housing for Female Terminals, Wire-to-Wire, 32 Position, .118 in / .228 in / .24 in [3.4 mm / 6.1 mm / 3 mm] Centerline, Sealable, Black, STRIKE

[View on TE.com >](#)

Connectors > Automotive Connectors > Automotive Housings > DEUTSCH Strike Housings



Connector System: Wire-to-Wire

Number of Positions: 32

Connector & Housing Type: Housing for Female Terminals

Centerline (Pitch): 3 mm, 3.4 mm, 5.8 mm, 6.1 mm [.118 in, .134 in, .228 in, .24 in]

Sealable: Yes

[All DEUTSCH Strike Housings \(20\)](#)

Features

Product Type Features

Mixed & Hybrid Connector	Yes
Connector Shape	Rectangular
Connector System	Wire-to-Wire
Connector & Housing Type	Housing for Female Terminals
Sealable	Yes
Connector & Contact Terminates To	Wire & Cable
Primary Locking Feature	Integrated in Housing

Configuration Features

Number of Positions	32
Number of Rows	4

Electrical Characteristics

Operating Voltage	48 VAC
Nominal Voltage Architecture	12 V, 24 V

Body Features

Cable Exit Angle	180°
Primary Product Color	Black

Connector & Keying Code	A
-------------------------	---

Contact Features

Contact Size	Size 16, Size 20
Contact Type	Socket
Mating Pin Diameter	1.02 mm, 1.59 mm[.04 in][.063 in]
Contact Current Rating (Max)	7.5 A, 13 A

Mechanical Attachment

Terminal Position Assurance	Yes
Strain Relief	With
Mating Alignment Type	Keyed
Mating Alignment	With
Connector Mounting Type	Cable Mount (Free-Hanging)

Housing Features

Housing Material	PBT
Centerline (Pitch)	3 mm, 3.4 mm, 5.8 mm, 6.1 mm[.118 in][.134 in][.228 in][.24 in]

Dimensions

Connector Height	48.5 mm[1.909 in]
Product Width	38.9 mm[1.532 in]
Product Length	81 mm[3.189 in]
Row-to-Row Spacing	10.85 mm, 11.35 mm, 3.5 mm[.138 in][.427 in][.447 in]
Compatible Insulation Diameter Range	1.55 – 2.41 mm, 1.55 – 3.05 mm[.061 – .095 in][.061 – .12 in]

Usage Conditions

Operating Temperature (Max)	125 °C[257 °F]
Operating Temperature Range	-55 – 125 °C[-67 – 257 °F]

Operation/Application

Circuit Application	Power & Signal
---------------------	----------------

Industry Standards

Degree of Protection	IP68, IP6K9K
Agency/Standard	SAE J2030
UL Flammability Rating	Not tested

Packaging Features

Packaging Quantity	144
Packaging Method	Box

Other

Serviceable	Yes
Connector Position Assurance Capable	No

Product Compliance

For compliance documentation, visit the product page on TE.com>

EU RoHS Directive 2011/65/EU	Compliant
EU ELV Directive 2000/53/EC	Compliant
China RoHS 2 Directive MIIT Order No 32, 2016	No Restricted Materials Above Threshold
EU REACH Regulation (EC) No. 1907/2006	Current ECHA Candidate List: JUNE 2023 (235) Candidate List Declared Against: JAN 2023 (233) Does not contain REACH SVHC
Halogen Content	Not Low Halogen - contains Br or Cl > 900 ppm.
Solder Process Capability	Not reviewed for solder process capability

Product Compliance Disclaimer

This information is provided based on reasonable inquiry of our suppliers and represents our current actual knowledge based on the information they provided. This information is subject to change. The part numbers that TE has identified as EU RoHS compliant have a maximum concentration of 0.1% by weight in homogenous materials for lead, hexavalent chromium, mercury, PBB, PBDE, DBP, BBP, DEHP, DIBP, and 0.01% for cadmium, or qualify for an exemption to these limits as defined in the Annexes of Directive 2011/65/EU (RoHS2). Finished electrical and electronic equipment products will be CE marked as required by Directive 2011/65/EU. Components may not be CE marked. Additionally, the part numbers that TE has identified as EU ELV compliant have a maximum concentration of 0.1% by weight in homogenous materials for lead, hexavalent chromium, and mercury, and 0.01% for cadmium, or qualify for an exemption to these limits as defined in the Annexes of Directive 2000/53/EC (ELV). Regarding the REACH Regulation, the information TE provides on SVHC in articles for this part number is based on the latest European Chemicals Agency (ECHA) ‘Guidance on requirements for substances in articles’ posted at this URL: <https://echa.europa.eu/guidance-documents/guidance-on-reach>


Compatible Parts



TE Part # CAT-D48-SP729
DEUTSCH Sealing Plugs



TE Part # CAT-J67-DSCC16
DEUTSCH Size 16 Crimp Contacts



TE Part # CAT-D48-ST273
DEUTSCH Solid Contacts



TE Part # 1062-20-0322
SOC, SF, SIZE 20, 16-22, SLEVLESS, NI /NI



TE Part # 1062-20-0377
SOC, SF, SIZE 20, 16-22, SLEVLESS, SN /SN



TE Part # 1062-20-0344
SOC, SF, SIZE 20, 16-22, SLEVLESS, AU /SN



TE Part # CAT-ST858-H342
DEUTSCH Strike Headers



TE Part # DT-RT1
EXT TOOL, FRONT RELEASE



TE Part # SRK-BS-MD-90-001
BKSHL, MED, BLK, RA, NW 17/22



TE Part # 1062-20-0622
SOC, SF, SIZE 20, 14-16, NI/NI



TE Part # 1062-20-0244
SOC, SF, SIZE 20, 16-22, AU/SN



TE Part # 1062-20-0222
SOC, SF, SIZE 20, 16-22, NI/NI



TE Part # 1062-20-0122
SOC, SF, SIZE 20, 16-22, NI/NI



TE Part # 1062-20-0144
SOC, SF, SIZE 20, 16-22, AU/SN



TE Part # 1062-20-0177
SOC, SF, SIZE 20, 16-22, SN/SN



TE Part # 1062-20-0277
SOC, SF, SIZE 20, 16-22, SN/SN



TE Part # 1062-20-0644
SOC, SF, SIZE 20, 14-16, AU/SN



TE Part # 1062-20-0677
SOC, SF, SIZE 20, 14-16, SN/SN



TE Part # SRK-BS-MD-90-002
BKSHL, MED, BLK, RA, NW 22

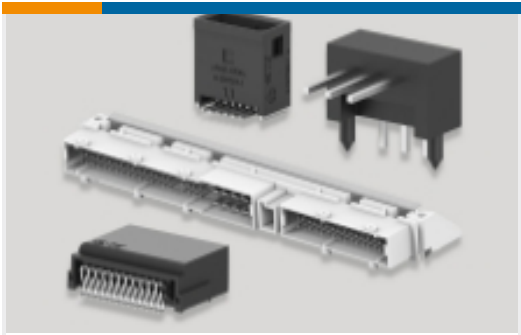


TE Part # SRK-BS-MD-ST-001
BKSHL, MED, BLK, ST, NW 17/22

Also in the Series | STRIKE



Automotive Housings(20)

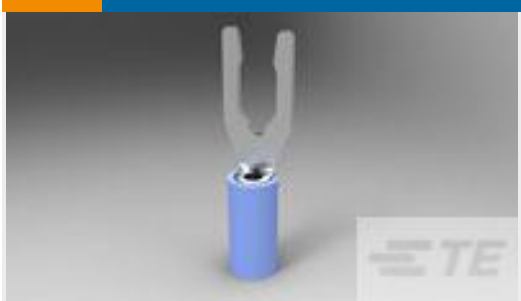


PCB Headers & Receptacles(9)

Customers Also Bought



TE Part #SRK06-MDB-32A-001
DEUTSCH Strike Housings



TE Part #52421-1
TERMINAL,PIDG SPR SPD 16-14 8



TE Part #6609069-4
25FC10 J0=F7750



TE Part #T4113401041-000
M12,MALE,RA,B CODE,4P,PG7,GOLD



TE Part #1-2329328-1
PB OFF/ON HC BLK M3 TERM. IP68



TE Part #2137740-2
HV1100 1POS HEADER 90 DEG ASSY SLD



TE Part #DTSK04-1-08PC
RECEPTACLE, INLINE, KEY C



TE Part #7-1437723-9
T238GA-PG16=INDUSTRIAL CONNECT

Documents

Product Drawings

PLG, 32P, BLK, E, A

English

CAD Files

3D PDF

3D

Customer View Model

ENG_CVM_CVM_SRK06-MDA-32A-001_D.2d_dxf.zip

English

Customer View Model

ENG_CVM_CVM_SRK06-MDA-32A-001_D.3d_igs.zip

English

Customer View Model

ENG_CVM_CVM_SRK06-MDA-32A-001_D.3d_stp.zip

English

By downloading the CAD file I accept and agree to the Terms and Conditions of use.



[Product Specifications](#)

[Application Specification](#)

English