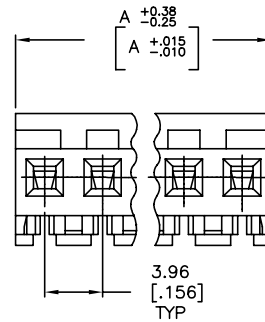
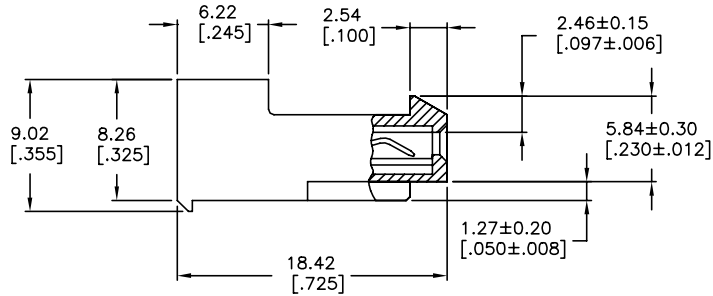
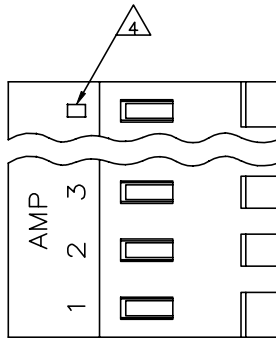


THIS DRAWING IS UNPUBLISHED. RELEASED FOR PUBLICATION  
 © COPYRIGHT - By - TE CONNECTIVITY ALL RIGHTS RESERVED.

| LOC |     | DIST                      |           | REVISIONS |      |  |  |
|-----|-----|---------------------------|-----------|-----------|------|--|--|
| P   | LTR | DESCRIPTION               | DATE      | DWN       | APVD |  |  |
| W   |     | REVISED PER ECR-20-000826 | 29MAY2020 | PC        | SW   |  |  |



|              |    |            |
|--------------|----|------------|
| 95.10[3.744] | 24 | 5-640430-4 |
| 91.13[3.588] | 23 | 5-640430-3 |
| 87.17[3.432] | 22 | 5-640430-2 |
| 83.21[3.276] | 21 | 5-640430-1 |
| 79.25[3.120] | 20 | 5-640430-0 |
| 75.29[2.964] | 19 | 4-640430-9 |
| 71.32[2.808] | 18 | 4-640430-8 |
| 67.36[2.652] | 17 | 4-640430-7 |
| 63.40[2.496] | 16 | 4-640430-6 |
| 59.44[2.340] | 15 | 4-640430-5 |
| 55.47[2.184] | 14 | 4-640430-4 |
| 51.51[2.028] | 13 | 4-640430-3 |
| 47.55[1.872] | 12 | 4-640430-2 |
| 43.59[1.716] | 11 | 4-640430-1 |
| 39.62[1.560] | 10 | 4-640430-0 |
| 35.66[1.404] | 9  | 3-640430-9 |
| 31.70[1.248] | 8  | 3-640430-8 |
| 27.74[1.092] | 7  | 3-640430-7 |
| 23.77[.936]  | 6  | 3-640430-6 |
| 19.81[.780]  | 5  | 3-640430-5 |
| 15.85[.624]  | 4  | 3-640430-4 |
| 11.89[.468]  | 3  | 3-640430-3 |
| 7.92[.312]   | 2  | 3-640430-2 |

1 MATERIAL: CONNECTOR - NYLON UL94-V2 (BLUE).  
 CONTACTS - 0.30[.012] THICK COPPER ALLOY  
 (BRIGHT TIN-LEAD 0.00203[.000080] MIN. THICK  
 FOR CONTACTS 640430-2 THRU 2-640430-4).  
 (MATTE WHISKER MITIGATED TIN 0.00203[.000080]  
 MIN. THICKNESS OVER NICKEL UNDERPLATE FOR  
 3-640430-2 THRU 5-640430-4).

2 CONTACTS ACCEPT 26 AWG WIRE WITH 2.41[.095] MAX  
 INSULATION DIAMETER.

3 CONTACTS MUST ACCEPT 1.14±0.03[.045]  
 POST AND REMAIN LOCKED IN POSITION.

4 IDENTIFICATION NUMBER FOR LAST CIRCUIT MAY  
 NOT APPEAR ON ALL ASSEMBLIES.

5 DIMENSIONS IN BRACKETS ARE IN INCHES.

6 HOUSING FEATURES ARE: CLOSED END WITH LOCKING  
 RAMP.

7 OBSOLETE PARTS: OBSOLETE CIS STREAMLINING PER D.RENAUD/D.SINISI

8 OBSOLETE PARTS

|              |              |    |            |
|--------------|--------------|----|------------|
| △ SUPERCEDED | 95.10[3.744] | 24 | 2-640430-4 |
| △ SUPERCEDED | 91.13[3.588] | 23 | 2-640430-3 |
| △ SUPERCEDED | 87.17[3.432] | 22 | 2-640430-2 |
| △ SUPERCEDED | 83.21[3.276] | 21 | 2-640430-1 |
| △ SUPERCEDED | 79.25[3.120] | 20 | 1-640430-0 |
| △ SUPERCEDED | 75.29[2.964] | 19 | 1-640430-9 |
| △ SUPERCEDED | 71.32[2.808] | 18 | 1-640430-8 |
| △ SUPERCEDED | 67.36[2.652] | 17 | 1-640430-7 |
| △ SUPERCEDED | 63.40[2.496] | 16 | 1-640430-6 |
| △ SUPERCEDED | 59.44[2.340] | 15 | 1-640430-5 |
| △ SUPERCEDED | 55.47[2.184] | 14 | 1-640430-4 |
| △ SUPERCEDED | 51.51[2.028] | 13 | 1-640430-3 |
| △ SUPERCEDED | 47.55[1.872] | 12 | 1-640430-2 |
| △ SUPERCEDED | 43.59[1.716] | 11 | 1-640430-1 |
| △ SUPERCEDED | 39.62[1.560] | 10 | 1-640430-0 |
| △ SUPERCEDED | 35.66[1.404] | 9  | 640430-9   |
| △ SUPERCEDED | 31.70[1.248] | 8  | 640430-8   |
| △ SUPERCEDED | 27.74[1.092] | 7  | 640430-7   |
|              | 23.77[.936]  | 6  | 640430-6   |
|              | 19.81[.780]  | 5  | 640430-5   |
| △ SUPERCEDED | 15.85[.624]  | 4  | 640430-4   |
|              | 11.89[.468]  | 3  | 640430-3   |
|              | 7.92[.312]   | 2  | 640430-2   |

|  |  |                               |      |   |
|--|--|-------------------------------|------|---|
| THIS DRAWING IS A CONTROLLED DOCUMENT. |  | DWN<br>S. CARPENTER 08JUL2003 |      |   |
| DIMENSIONS: mm [INCHES]                |  | CHK<br>D. BOSSI 08JUL2003     |      |   |
| TOLERANCES UNLESS OTHERWISE SPECIFIED: |  | APVD<br>D. BOSSI 08JUL2003    | NAME |   |
| 0 PLC ± -                              |  | PRODUCT SPEC                  |      | MTA 156 CONNECTOR ASSEMBLY,<br>26 AWG, STANDARD |
| 1 PLC ± -                              |  | 108-1051                      |      |   |
| 2 PLC ± -                              |  | APPLICATION SPEC              |      | SIZE<br>A2                                      |
| 3 PLC ± 0.13 [0.005]                   |  | 114-1020                      |      |   |
| 4 PLC ± -                              |  | FINISH                        |      | CAGE CODE<br>00779                              |
| 5 PLC ± -                              |  | MATERIAL                      |      | DRAWING NO<br>640430                            |
| FINISH                                 |  | WEIGHT                        |      | RESTRICTED TO                                   |
| 1                                      |  | CUSTOMER DRAWING              |      | SCALE<br>4:1                                    |
|  |  |                               |      | SHEET<br>1 of 1                                 |
|  |  |                               |      | REV<br>W  |