



Connectors > Automotive Connectors > Automotive Housings > AMPSEAL 16 Housings



Connector System: **Wire-to-Wire**
Number of Positions: **2**
Connector & Housing Type: **Housing for Male Terminals**
Sealable: **Yes**
Mating Pin Diameter: **1.5 mm [.059 in]**

[All AMPSEAL 16 Housings \(226\)](#)

Features

Product Type Features

Mixed & Hybrid Connector	No
Connector Shape	Rectangular
Connector System	Wire-to-Wire
Connector & Housing Type	Housing for Male Terminals
Sealable	Yes
Primary Locking Feature	Integrated in Housing

Configuration Features

Number of Positions	2
Number of Rows	2

Electrical Characteristics

Operating Voltage	12 VDC
Nominal Voltage Architecture	12 V



Body Features

Cable Exit Angle	180°
Primary Product Color	Blue

Contact Features

Contact Type	Pin
Mating Pin Diameter	1.5 mm[.059 in]

Mechanical Attachment

Terminal Position Assurance	Yes
Strain Relief	Without
Mating Alignment Type	Polarizing Rib
Mating Alignment	With
Connector Mounting Type	Cable Mount (Free-Hanging)

Housing Features

Housing Material	PA GF
------------------	-------

Dimensions

Connector Height	13.6 mm[.535 in]
Product Width	48.6 mm[1.913 in]
Product Length	19.8 mm[.78 in]
Row-to-Row Spacing	6.3 mm[.248 in]

Usage Conditions

Operating Temperature (Max)	70 °C, 75 °C, 80 °C, 85 °C, 90 °C, 100 °C, 105 °C[158 °F][167 °F][176 °F][185 °F][194 °F][212 °F][221 °F]
Operating Temperature Range	-40 – 105 °C[-40 – 221 °F]

Industry Standards

UL Flammability Rating	UL 94HB
------------------------	---------

Packaging Features

Packaging Quantity	550
Packaging Method	Package

Other

Serviceable	Yes
Connector Position Assurance Capable	No



Product Compliance

For compliance documentation, visit the product page on TE.com>

EU RoHS Directive 2011/65/EU	Compliant
EU ELV Directive 2000/53/EC	Compliant
China RoHS 2 Directive MIIT Order No 32, 2016	No Restricted Materials Above Threshold
EU REACH Regulation (EC) No. 1907/2006	Current ECHA Candidate List: JUNE 2023 (235) Candidate List Declared Against: JUNE 2023 (235) Does not contain REACH SVHC
Halogen Content	Low Halogen - Br, Cl, F, I < 900 ppm per homogenous material. Also BFR/CFR/PVC Free
Solder Process Capability	Not applicable for solder process capability

Product Compliance Disclaimer

This information is provided based on reasonable inquiry of our suppliers and represents our current actual knowledge based on the information they provided. This information is subject to change. The part numbers that TE has identified as EU RoHS compliant have a maximum concentration of 0.1% by weight in homogenous materials for lead, hexavalent chromium, mercury, PBB, PBDE, DBP, BBP, DEHP, DIBP, and 0.01% for cadmium, or qualify for an exemption to these limits as defined in the Annexes of Directive 2011/65/EU (RoHS2). Finished electrical and electronic equipment products will be CE marked as required by Directive 2011/65/EU. Components may not be CE marked. Additionally, the part numbers that TE has identified as EU ELV compliant have a maximum concentration of 0.1% by weight in homogenous materials for lead, hexavalent chromium, and mercury, and 0.01% for cadmium, or qualify for an exemption to these limits as defined in the Annexes of Directive 2000/53/EC (ELV). Regarding the REACH Regulation, the information TE provides on SVHC in articles for this part number is based on the latest European Chemicals Agency (ECHA) ‘Guidance on requirements for substances in articles’ posted at this URL: <https://echa.europa.eu/guidance-documents/guidance-on-reach>

Compatible Parts



TE Part # 282080-1
AMP SUPERSEAL 1.5 SERIES 2P PL



TE Part # 776540-1
776310-1 SECONDARY LOCK WITH
120 OHM 1/2



TE Part # 281934-2
SINGLE WIRE SEAL

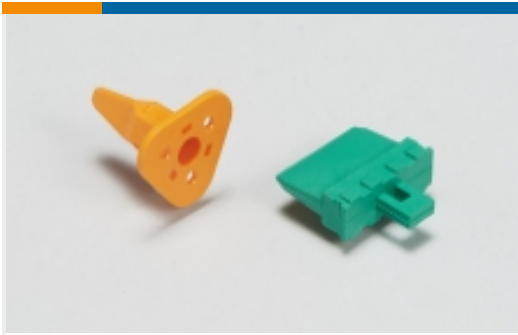


TE Part # 173631-7
070 MLC REC CONT 20-16 GOLD

Also in the Series | AMPSEAL 16



Automotive Connector Caps & Covers
(1)



Automotive Connector Locks &
Position Assurance(2)



Automotive Housings(244)



Automotive Terminals(33)



Connector Backshells(84)



Connector Seals & Cavity Plugs(4)



Data Connectivity Headers(2)



Data Connectivity Housings(3)

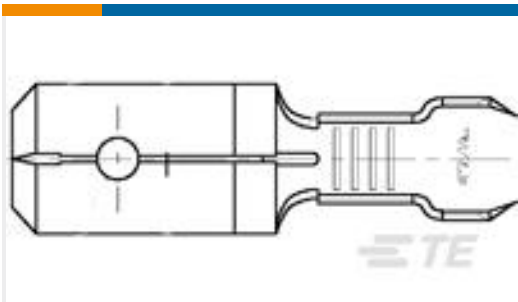


Other Automotive Connector
Accessories(11)

Customers Also Bought



TE Part #52263-3
TERMINAL R PG 8 10



TE Part #42475-4
250 FASTON TAB 22-18 AWG TPBR



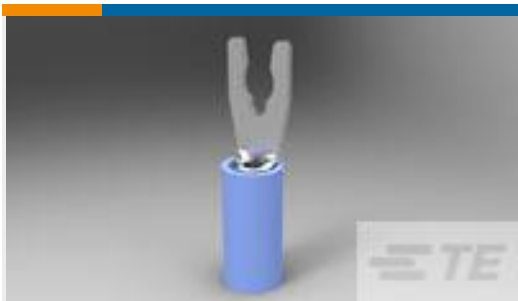
TE Part #3-1564337-1
16POS, MIXED,REC HSG,ASSY



TE Part #3-967325-1
2,5MM BU-GEH 4P,GN



TE Part #2-1534127-1
AMP MCP 2.8 SOCKET HSG.,21POS.
ASSY



TE Part #52934-1
TERMINAL,PIDG SPR SPD 16-14 5



TE Part #184139-1
WIRE SEAL,RUBBER,SENSOR,BLUE



TE Part #217885-6
CRIMPER, WIRE "F"



Documents

Product Drawings

[CAP HOUSING 2 POSITION](#)

English

CAD Files

[3D PDF](#)

English

Customer View Model

[ENG_CVM_776309-1_B.2d_dxf.zip](#)

English

Customer View Model

[ENG_CVM_776309-1_B.3d_igs.zip](#)

English

Customer View Model

[ENG_CVM_776309-1_B.3d_stp.zip](#)

English

By downloading the CAD file I accept and agree to the [Terms and Conditions](#) of use.

Datasheets & Catalog Pages

[ICT Terminals and Connectors Catalogue](#)

English

Product Specifications

[Application Specification](#)

English

Instruction Sheets

[Instruction Sheet \(U.S.\)](#)

English