

## SUMMARY

### # Wires



Image is for illustrative purpose only

Series	1S
Termination type	No contacts / Accessory
IP rating	61 mated (mating interface)
AWG wire size	0.00 - 0.00
Cable Ø	0.00 - 0.00 mm
Status	Active

### Download

[Request a quote](#)

[Catalog](#)

## TECHNICAL DETAILS

### Mechanics

Shell Style/Model	BRR*: Cap spring loaded dust cap for ERA,ERN and EG receptacle or PSA and PK fixed receptacle
Keying	Circular, female
Housing Material	PSU(Polysulfone) shell without treatment, FKM (VITON®)
Variant	G : Gray
Weight	1.12 g

### Performance

Configuration
Insulator
Rated Current

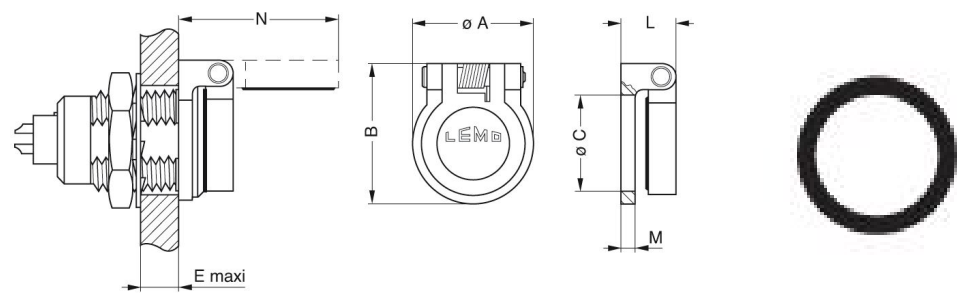
### Others

Endurance (Shell): 5000 mating cycles  
Temp (min / max): -50°C / +150°C  
Axes material: Nickel-plated brass

LEMO products and services are provided "as is". LEMO makes no warranties or representations with regard to LEMO product & services or use of them, express, implied or statutory, including for accuracy, completeness, or security. The user is fully responsible for his products and applications using LEMO components.

Maximum operating temperature: 100°C  
Watertightness: IP61 according to IEC 60529

# DRAWINGS



## Dimensions

	A	B	C	E	L	M	N
mm.	14.2	17.1	12	6	6.3	1.5	20.3
in.	0,56	0,67	0,47	0,24	0,25	0,06	0,80

# RECOMMENDED BY LEMO

## Tools

LEMO products and services are provided “as is”. LEMO makes no warranties or representations with regard to LEMO product & services or use of them, express, implied or statutory, including for accuracy, completeness, or security. The user is fully responsible for his products and applications using LEMO components.