



Connectors > Rectangular Connectors > Standard Rectangular Connectors



Connector Product Type: **Housing Assembly**
Connector & Housing Type: **Receptacle**
Mating Alignment: **With**
Mating Retention: **With**
Mating Retention Type: **Screw**

Features

Product Type Features

Connector Product Type	Housing Assembly
Connector & Housing Type	Receptacle
Connector System	Wire-to-Motor
Sealable	Yes
Connector & Contact Terminates To	Wire & Cable

Configuration Features

Number of Positions	6
Number of Rows	2

Electrical Characteristics

Operating Voltage	380 VAC
-------------------	---------

Body Features

Seal Type	Panel Gasket
-----------	--------------

Contact Features

--	--



Contact Retention Within Housing	With
Contact Current Rating (Max)	5 A

Termination Features

Termination Method to Wire & Cable	Crimp
------------------------------------	-------

Mechanical Attachment

Contact Retention Type Within Housing	Locking Lance
Mating Alignment	With
Mating Retention	With
Mating Retention Type	Screw
Connector Mounting Type	Panel Mount

Housing Features

Centerline (Pitch)	2 mm[.078 in]
--------------------	---------------

Dimensions

Row-to-Row Spacing	6.9 mm[.272 in]
--------------------	-----------------

Usage Conditions

Operating Temperature Range	-40 – 125 °C[-40 – 257 °F]
-----------------------------	----------------------------

Operation/Application

Shielded	Yes
Circuit Application	Power & Signal

Industry Standards

UL Flammability Rating	UL 94V-0
------------------------	----------

Product Compliance

For compliance documentation, visit the product page on [TE.com](#)>

EU RoHS Directive 2011/65/EU	Compliant
EU ELV Directive 2000/53/EC	Compliant
China RoHS 2 Directive MIIT Order No 32, 2016	No Restricted Materials Above Threshold
EU REACH Regulation (EC) No. 1907/2006	Current ECHA Candidate List: JUNE 2023 (235) Candidate List Declared Against: JAN 2021 (211) Does not contain REACH SVHC
Halogen Content	Not Yet Reviewed for halogen content



Solder Process Capability

Not reviewed for solder process capability

Product Compliance Disclaimer

This information is provided based on reasonable inquiry of our suppliers and represents our current actual knowledge based on the information they provided. This information is subject to change. The part numbers that TE has identified as EU RoHS compliant have a maximum concentration of 0.1% by weight in homogenous materials for lead, hexavalent chromium, mercury, PBB, PBDE, DBP, BBP, DEHP, DIBP, and 0.01% for cadmium, or qualify for an exemption to these limits as defined in the Annexes of Directive 2011/65/EU (RoHS2). Finished electrical and electronic equipment products will be CE marked as required by Directive 2011/65/EU. Components may not be CE marked. Additionally, the part numbers that TE has identified as EU ELV compliant have a maximum concentration of 0.1% by weight in homogenous materials for lead, hexavalent chromium, and mercury, and 0.01% for cadmium, or qualify for an exemption to these limits as defined in the Annexes of Directive 2000/53/EC (ELV). Regarding the REACH Regulation, the information TE provides on SVHC in articles for this part number is based on the latest European Chemicals Agency (ECHA) 'Guidance on requirements for substances in articles' posted at this URL: <https://echa.europa.eu/guidance-documents/guidance-on-reach>

Compatible Parts



TE Part # 2271277-1
GROUNDING SHELL FOR MMC CONNECTOR




TE Part # 2271279-2
REC. TERMINAL FOR MMC CONNECTOR

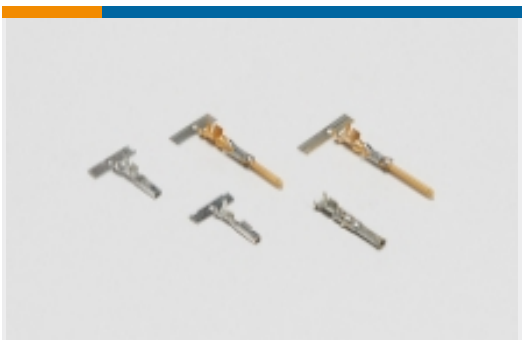


TE Part # 2271280-1
SUB ASSEMBLY FOR MMC MOTOR SIDER


Also in the Series | Micro Motor




Connector Contacts(1)




Power Contacts(2)




Rectangular Caps & Covers(2)



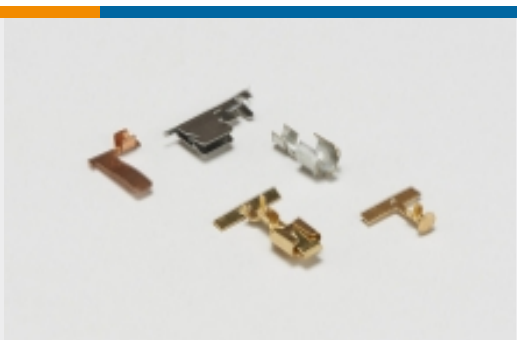
Rectangular Connector Hardware(1)




Rectangular Connector Housings(1)



Rectangular Power Connectors(3)



Special Purpose Terminals(1)



Standard Rectangular Connectors(4)

Customers Also Bought



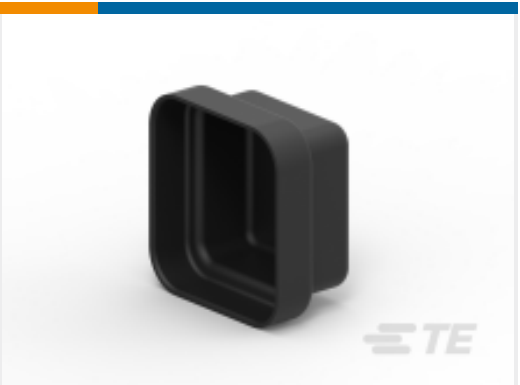
TE Part #1-1318119-4
DYNAMIC D-2100 REC HSG 8P



TE Part #2271279-2
REC. TERMINAL FOR MMC CONNECTOR



TE Part #2271280-1
SUB ASSEMBLY FOR MMC MOTOR SIDER



TE Part #2271284-1
DUST CAP FOR ENCODER



TE Part #2280413-1
CCII TAB REC CONN 22-18 ASSY

Documents

Product Drawings

SUB ASSEMBLY FOR MMC CABLE W/O TERMINALS

English

CAD Files

3D PDF

3D

Customer View Model

ENG_CVM_CVM_2271522-1_1.2d_dxf.zip

English

Customer View Model

ENG_CVM_CVM_2271522-1_1.3d_igs.zip

English

Customer View Model

ENG_CVM_CVM_2271522-1_1.3d_stp.zip

English

By downloading the CAD file I accept and agree to the [Terms and Conditions](#) of use.

Product Specifications

Application Specification

English