

PB7B2FM3M1CAL00Y500

✓ ACTIVE

Alcoswitch | Alcoswitch PB7

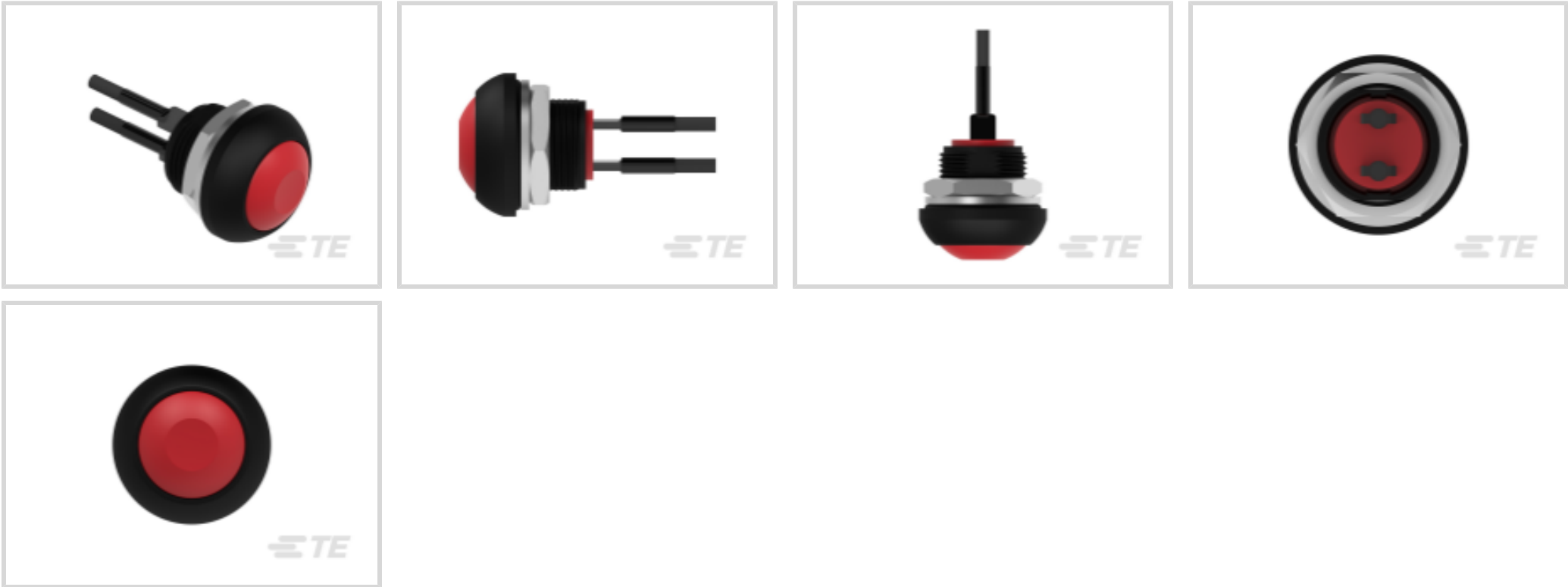
TE Internal #: 2329386-7

Push Button Switches, Single Pole - Single Throw Configuration (Pole-Throw), Switch, Single Actuator, Flush Actuator Profile, Threaded, Alcoswitch PB7

[View on TE.com >](#)



Relays, Contactors & Switches > Switches > Push Button Switches



Configuration (Pole-Throw): **Single Pole - Single Throw**

Push Button Switch Product Type: **Switch**

Number of Actuators: **Single**

Actuator Profile: **Flush**

Bushing Style: **Threaded**

Features

Product Type Features

Switch Type	Pushbutton
Dust Proof	Yes
Push Button Switch Product Type	Switch
Illuminated	No
Actuator Style	Round

Configuration Features

ESD Grounding Terminal	Without
Detent Style	Audible
Ganged	No
Configuration (Pole-Throw)	Single Pole - Single Throw
Number of Actuators	Single
Snap Action	Without
Support Bracket	Without
Tactile	No



Operating Function	Momentary
--------------------	-----------

Electrical Characteristics

Push Button Switch Voltage Rating	50 VDC
-----------------------------------	--------

Body Features

Case Material	Diallyl Phthalate (DAP)
Actuator Material	Polyamide
Actuator Profile	Flush
Bushing Style	Threaded
Bushing Thread Size	M12 x .75
Actuator Color	Red

Contact Features

Push Button Switch Contact Current Rating	.12 A
Switch Contact Plating Material	Gold over Silver

Termination Features

Termination Type	Long Leads
------------------	------------

Mechanical Attachment

Mounting Angle	Vertical
Push Button Switch Mounting Type	Panel

Housing Features

Process Sealed	Yes
----------------	-----

Industry Standards

IP Rating	IP68
-----------	------

Packaging Features

Packaging Method	Loose Piece
------------------	-------------

Product Compliance

For compliance documentation, visit the product page on TE.com>

EU RoHS Directive 2011/65/EU	Compliant with Exemptions
EU ELV Directive 2000/53/EC	Compliant with Exemptions
China RoHS 2 Directive MIIT Order No 32, 2016	Restricted Materials Above Threshold
EU REACH Regulation (EC) No. 1907/2006	Current ECHA Candidate List: JUNE 2023 (235)



Candidate List Declared Against: JUNE 2023 (235)  
SVHC > Threshold:  
Pb (4% in Component Part)


Article Safe Usage Statements:  
Do not eat, drink or smoke when using this product. Wash thoroughly after handling. Recycle if possible and dispose of the article by following all applicable governmental regulations relevant to your geographic location.

Halogen Content	Low Halogen - Br, Cl, F, I < 900 ppm per homogenous material. Also BFR/CFR/PVC Free
Solder Process Capability	Not reviewed for solder process capability


Product Compliance Disclaimer

This information is provided based on reasonable inquiry of our suppliers and represents our current actual knowledge based on the information they provided. This information is subject to change. The part numbers that TE has identified as EU RoHS compliant have a maximum concentration of 0.1% by weight in homogenous materials for lead, hexavalent chromium, mercury, PBB, PBDE, DBP, BBP, DEHP, DIBP, and 0.01% for cadmium, or qualify for an exemption to these limits as defined in the Annexes of Directive 2011/65/EU (RoHS2). Finished electrical and electronic equipment products will be CE marked as required by Directive 2011/65/EU. Components may not be CE marked. Additionally, the part numbers that TE has identified as EU ELV compliant have a maximum concentration of 0.1% by weight in homogenous materials for lead, hexavalent chromium, and mercury, and 0.01% for cadmium, or qualify for an exemption to these limits as defined in the Annexes of Directive 2000/53/EC (ELV). Regarding the REACH Regulation, the information TE provides on SVHC in articles for this part number is based on the latest European Chemicals Agency (ECHA) 'Guidance on requirements for substances in articles' posted at this URL: <https://echa.europa.eu/guidance-documents/guidance-on-reach>


Compatible Parts




TE Part # 2329383-3  
PB OFF/ON FC YLW M1 TERM. IP68




TE Part # 2329359-1  
PN OFF/ON HC BLK M1 TERM IP68  
500MM LHS



TE Part # 2329359-2  
PN OFF/ON HC RED M1 TERM IP68  
500MM LHS



TE Part # 2329361-3  
PB OFF/ON RC YLW M1 TERM IP68  
500MM L



TE Part # 2329387-4  
PB OFF/ON FC BLK M1 TERM GRE  
LED IP68

Also in the Series | Alcoswitch PB7



Push Button Switches(30)

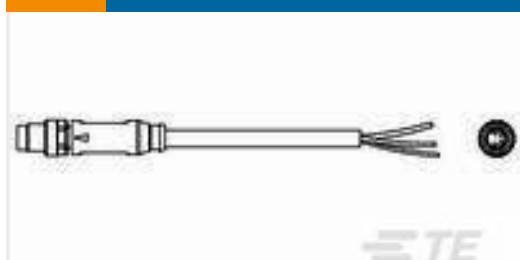
Customers Also Bought



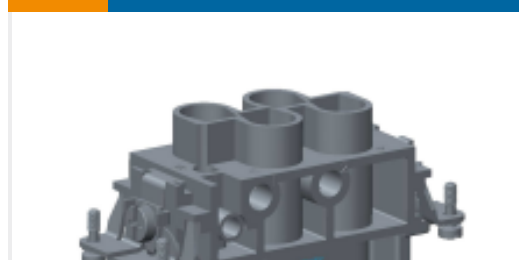
TE Part #3-644486-4  
14P MTA100 SHRDED HDR ASSY SN



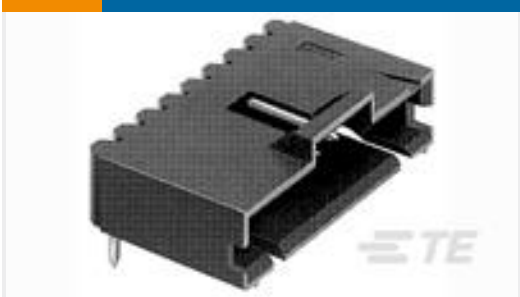
TE Part #66107-3  
III+ PIN,26-24,15AU/FL,LP



TE Part #2273002-1  
M8 x 1.0 straight plug Pigtail



TE Part #T2100042201-000  
HK4/0-004-F,WITH ONE SLOT SCREW



TE Part #5-104935-3  
03 MTE HDR SRRA LATCH



TE Part #1241152-5  
5P HV100 REC. CON, SMD, GOLD, BLISTER



TE Part #66332-5  
III+ PIN,24-20,TIN-LEAD,STRIP



TE Part #1825043-3  
UP01DTANLA04,MICROSWITCH,SNAP



TE Part #2-382811-1  
SHUNT, ECON, PHBRN, BLACK



TE Part #2329362-7  
PB ON/OFF RC RED M1 TERM IP68 500MM LHS

Documents

Product Drawings

PB ON/OFF FC RED M1 TERM IP68 500MM LHS

English

CAD Files

3D PDF

3D

Customer View Model

ENG\_CVM\_CVM\_2329386-7\_A.2d\_dxf.zip



English

Customer View Model

[ENG\\_CVM\\_CVM\\_2329386-7\\_A.3d\\_igs.zip](#)

English

Customer View Model

[ENG\\_CVM\\_CVM\\_2329386-7\\_A.3d\\_stp.zip](#)

English

By downloading the CAD file I accept and agree to the [Terms and Conditions](#) of use.

Datasheets & Catalog Pages

[IP68 Sub Mini PB Data Sheet](#)

English