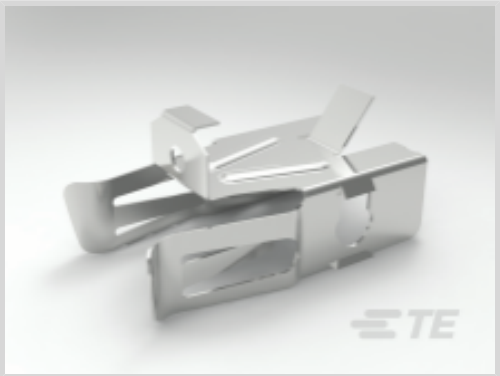




Terminals & Splices > Special Purpose Terminals



Terminal Material Thickness: **.51 mm [ .02 in ]**  
Terminal Plating Material: **Unplated**  
Sealable: **No**  
Operating Temperature Range: **-40 – 200 °C [ -40 – 356 °F ]**

Features

Product Type Features

|                   |            |
|-------------------|------------|
| Terminal Features | Heavy Duty |
| Sealable          | No         |

Contact Features

|                           |          |
|---------------------------|----------|
| Terminal Plating Material | Unplated |
|---------------------------|----------|

Dimensions

|                             |                |
|-----------------------------|----------------|
| Terminal Material Thickness | .51 mm[.02 in] |
|-----------------------------|----------------|

Usage Conditions

|                             |                            |
|-----------------------------|----------------------------|
| Insulation Option           | Uninsulated                |
| Operating Temperature Range | -40 – 200 °C[-40 – 356 °F] |

Product Compliance

[For compliance documentation, visit the product page on TE.com>](#)

|   |   |
|---|---|
| EU RoHS Directive 2011/65/EU                  | Compliant   |
| EU ELV Directive 2000/53/EC                   | Compliant   |
| China RoHS 2 Directive MIIT Order No 32, 2016 | No Restricted Materials Above Threshold   |
| EU REACH Regulation (EC) No. 1907/2006        | Current ECHA Candidate List: JUNE 2023 (235)<br>Candidate List Declared Against: JUNE 2023 (235)<br>Does not contain REACH SVHC |



|                           |   |
|---------------------------|---|
| Halogen Content           | Low Halogen - Br, Cl, F, I < 900 ppm per homogenous material. Also BFR/CFR/PVC Free |
| Solder Process Capability | Not reviewed for solder process capability  |

Product Compliance Disclaimer

This information is provided based on reasonable inquiry of our suppliers and represents our current actual knowledge based on the information they provided. This information is subject to change. The part numbers that TE has identified as EU RoHS compliant have a maximum concentration of 0.1% by weight in homogenous materials for lead, hexavalent chromium, mercury, PBB, PBDE, DBP, BBP, DEHP, DIBP, and 0.01% for cadmium, or qualify for an exemption to these limits as defined in the Annexes of Directive 2011/65/EU (RoHS2). Finished electrical and electronic equipment products will be CE marked as required by Directive 2011/65/EU. Components may not be CE marked. Additionally, the part numbers that TE has identified as EU ELV compliant have a maximum concentration of 0.1% by weight in homogenous materials for lead, hexavalent chromium, and mercury, and 0.01% for cadmium, or qualify for an exemption to these limits as defined in the Annexes of Directive 2000/53/EC (ELV). Regarding the REACH Regulation, the information TE provides on SVHC in articles for this part number is based on the latest European Chemicals Agency (ECHA) 'Guidance on requirements for substances in articles' posted at this URL: <https://echa.europa.eu/guidance-documents/guidance-on-reach>

Compatible Parts

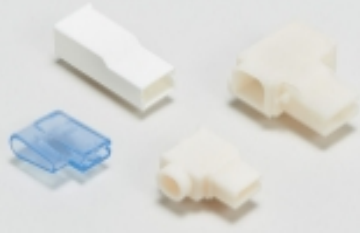


TE Part # 640748-7  
HEAVY DUTY BURNER REC 18-14  
AWG PHBRZ




TE Part # 1969726-1  
2P HEAVY DUTY BURNER HSG

Also in the Series | Appliance Connectors



Crimp Terminal Housings(1)



Special Purpose Terminals(10)

Customers Also Bought



|  |   |   |  |
|--|---|---|--|
|  |   |   |  |
| TE Part #770090-1<br>06P .093 COMM P&S PLUG HSG            | TE Part #2-1123722-4<br>3.96 EP PLUG HSG 4P(YELLOW) | TE Part #62591-1<br>187 FASTON FLAG REC 20-16 AWG TPBR    | TE Part #1969725-1<br>187 FAST&110 PL HSG.,REC.,4 POS, BLACK |
|  |   |   |  |
| TE Part #521596-2<br>ULTRA-POD 187 ASSY REC 22-18 AWG TPBR | TE Part #1862006-5<br>STD PW TIMER CONTACT          | TE Part #521843-1<br>POWER BLOCK ASSEMBLY 16-12 AWG PTPBR | TE Part #521844-1<br>POWER BLOCK ASSEMBLY 16-12 AWG BR       |
|  |   |   |  |
| TE Part #1544113-1<br>CLIP DRAPEAU 6,35                    |   |   |  |

Documents

Product Drawings  
CLIP, HEAVY DUTY BURNER CONNECTOR  
English

CAD Files  
3D PDF  
3D  
Customer View Model  
ENG\_CVM\_CVM\_1969755-1\_A.2d\_dxf.zip  
English  
Customer View Model  
ENG\_CVM\_CVM\_1969755-1\_A.3d\_igs.zip  
English  
Customer View Model  
ENG\_CVM\_CVM\_1969755-1\_A.3d\_stp.zip  
English

By downloading the CAD file I accept and agree to the Terms and Conditions of use.

Product Specifications



Application Specification

English

Product Environmental Compliance

TE Material Declaration

English