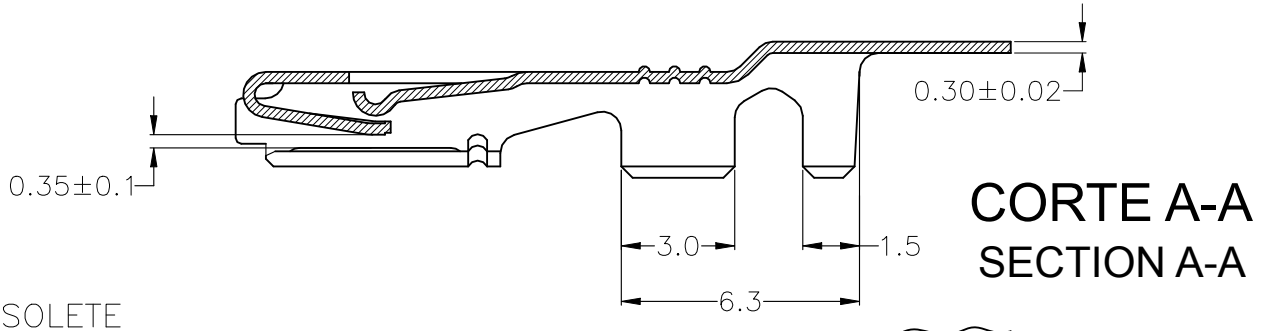
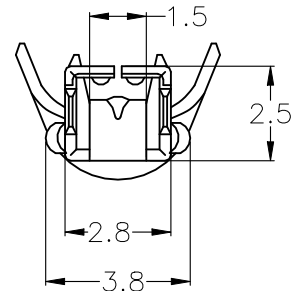
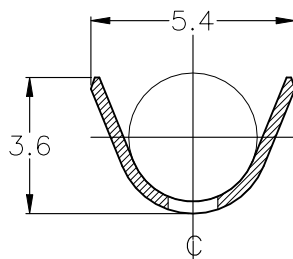
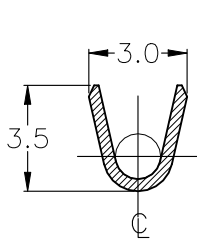
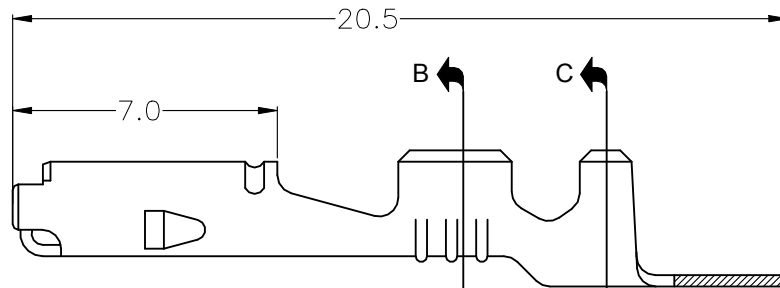
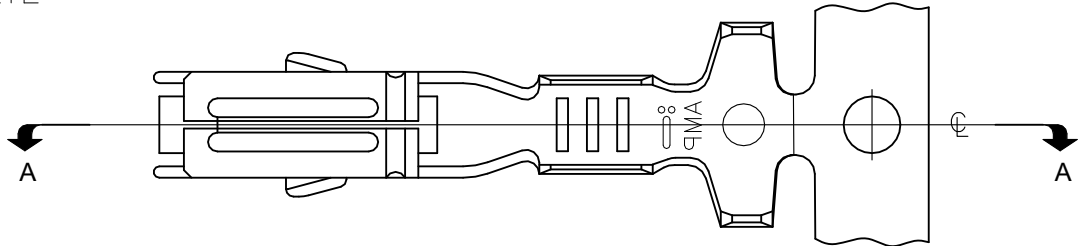


REVISIONS					
P	LTR	DESCRIPTION	DATE	DWN	APVD
	C2	REVISED PER ECN-22-166554	23OCT2022	AP	AB



1 OBSOLETE



TE Connectivity. All Rights Reserved.

WIRE RANGE 1,0-1,5mm <sup>2</sup>  ISUL. RANGE DIA.1,4-2,4	PRÉ-PRATEADO PRE-SILVER	LATÃO BRASS	880698-3
	PRÉ-ESTANHADO PRE TIN	BRONZE FOSFOROSO PHOS. BRONZE	1 880698-2
	PRÉ-ESTANHADO PRE TIN	LATÃO BRASS	880698-1
	<b>FINISH</b>	<b>MATERIAL</b>	<b>PART NUMBER</b>

DIMENSIONS: mm  TOLERANCES UNLESS OTHERWISE SPECIFIED:  0 PLC ± - 1 PLC ± 0.3 2 PLC ± - 3 PLC ± 3 4 PLC ± - ANGLES ± -	DWN H.LIVERARO 25JAN01	MATERIAL VER TABELA/SEE TABLE	FINISH VER TABELA/SEE TABLE			
	CHK N.C.LAPRESA 25JAN01	TE Connectivity  NAME TERMINAL, 1.8 ECONOSEAL "J" SERIES MARK II+ REC.				
APVD L.G.DALTO 25JAN01	SIZE A4			CAGE CODE 00779	DRAWING NO C-880698	RESTRICTED TO -
PRODUCT SPEC -	APPLICATION SPEC -	WEIGHT -	CUSTOMER DRAWING	SCALE 1:1	SHEET 1 OF 1	REV C2

