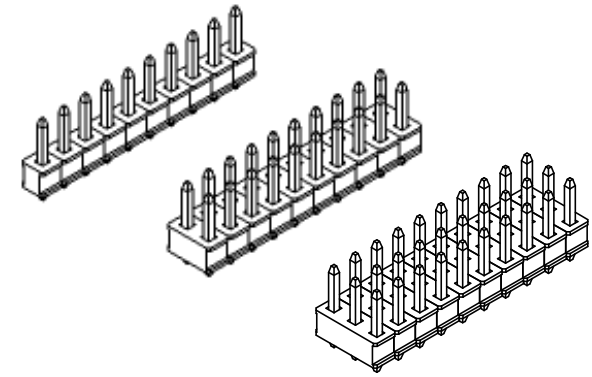
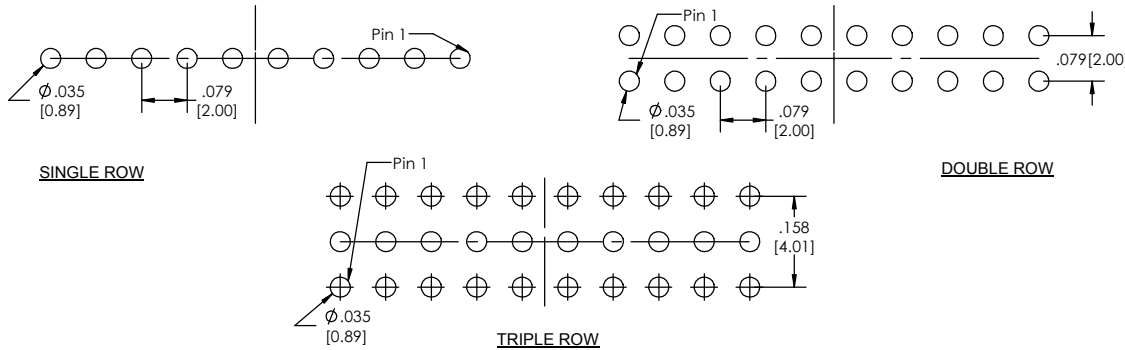


**Recommended P.C. Board Layout**  
SCALE 6:1

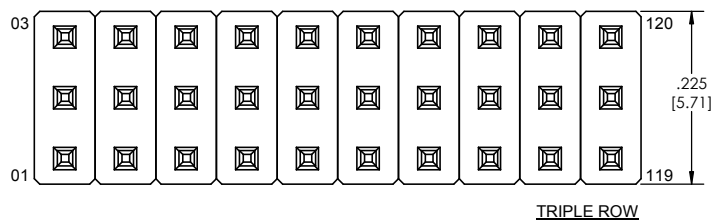
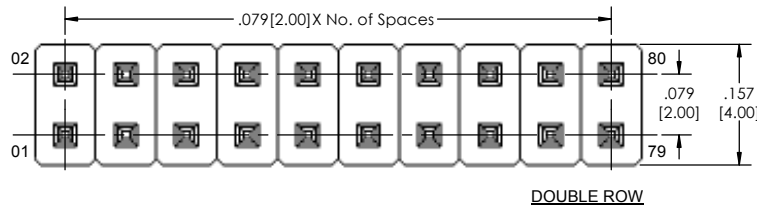
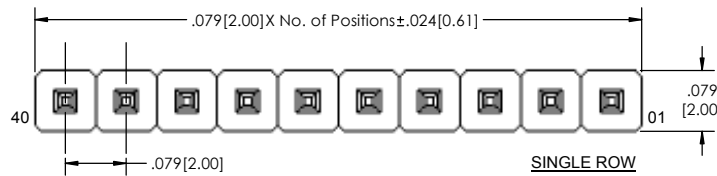
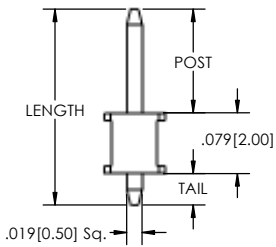
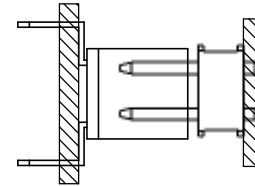


TTS HC-2 **XX** - **X** - **XXX** - **XX** - **XXX** - **XX** - **XX** - **XXX** - **LF**  
(A) (B) (C) (D) (E) (F) (G) (H) (I)

- A. Pins Per Row - 1 through 40
- B. Row Specification
  - S= Single Row
  - D= Double Row
  - T= Triple Row
- C. Desired Tail Length
  - If Tail is not specified then: Tail(T) = Overall Length(L) - Post(P) - .079[2.00]
- D. Pin Options
  - See Pin Options below
- E. Desired Post Height
  - Please Specify
  - e.g. .100[2.54]= 100
- F. Plating Options
  - See Plating Options below
- G. Lock Tight "LT"(Optional)
  - Leave blank if not needed
  - LT= With
- H. Polarized Position
  - Leave blank if not needed
  - If required, specify empty pin position
  - e.g. 012 for Pin 12
- I. Lead Free

**Mates with:**  
BCSS.  
BSSH.  
BSSH.  
BSSQ.  
BSSQC.  
BSSQM.  
LSMBC.  
LSVSS.  
LSSHSM.  
SMBC.  
SSHQ.  
SSHQR.  
SSHR.  
SSHS.  
SSHSM.  
ULSMBC.

**APPLICATION**



Plating options	
G	-10µ Gold on Contact Area/ Flash on Tail
T	-Matte Tin all Over
GT	-10µ Gold on Contact Area/ Matte Tin on Tail
H	-30µ Gold on Contact Area/ Matte Tin on Tail
F	-Gold Flash over Entire Pin
FT	-Gold Flash on Contact Area/ Matte Tin on Tail

**Specifications:**  
Current Rating: 3.0 Ampere  
Insulation Resistance: 1000M Ohms Min.  
Dielectric Withstanding: 500V AC  
Contact Resistance: 20M Ohms Max.  
Operation Temperature: -40°C to +105°C  
Max. Process Temperature  
Peak: 280°C up to 10 secs.  
Process: 230°C up to 60 secs.  
Wave: 260°C up to 6 secs.  
Manual Solder: 350°C up to 5 secs.

**Materials:**  
Contact Material: Phosphor Bronze  
Insulator Material: Nylon 6T  
Plating: Au or Sn over 50µ" (1.27) Ni

Pin Options		
Overall Length	Max. Post Height	
.255[6.48mm]	.135[1.65mm]	01
.302[7.67mm]	.182[3.43mm]	02
.323[8.20mm]	.203[4.62mm]	03
.377[9.58mm]	.257[5.16mm]	04
.397[10.08mm]	.277[6.53mm]	06
.456[11.58mm]	.336[7.04mm]	07
.535[13.59mm]	.415[10.54mm]	08
.555[14.10mm]	.435[11.05mm]	09
.575[14.61mm]	.455[11.56mm]	10
.594[15.09mm]	.474[12.04mm]	12
.614[15.60mm]	.494[12.55mm]	14
.673[17.09mm]	.553[14.05mm]	15
.713[18.11mm]	.593[15.06mm]	16
.733[18.62mm]	.613[15.57mm]	17
.752[19.10mm]	.632[16.05mm]	18
.830[21.08mm]	.710[18.03mm]	22
.871[22.12mm]	.751[19.08mm]	24
.950[24.13mm]	.830[21.08mm]	28
1.110[28.19mm]	.990[25.15mm]	30
1.170[29.72mm]	1.050[26.67mm]	36

Post + Tail + .079[2.00] must not exceed Overall Length

Tails may be clipped to achieve specific dimensions.

Products cut to specific sizes are uncancelable/ nonreturnable.  
Parts are subject to change without notice.



**PROPRIETARY AND CONFIDENTIAL**  
THE INFORMATION CONTAINED IN THIS DRAWING IS THE SOLE PROPERTY OF Major League Electronics. ANY REPRODUCTION IN PART OR AS A WHOLE WITHOUT THE WRITTEN PERMISSION OF Major League Electronics IS PROHIBITED.

UNLESS OTHERWISE SPECIFIED:		NAME DATE		
DIMENSIONS ARE IN INCHES		DRAWN	EOW 02/07/14	
TOLERANCES:		CHECKED	GWE 02/07/14	
ONE DECIMALS ±.100		ENG APPR.		
TWO DECIMALS ±.010		MFG APPR.		ADDRESS: 2533 Centennial Blvd. Jeffersonville, IN 47130 Phone: 812-670-4174 Fax: 812-670-4175 E-Mail: mls@mlelectronics.com
THREE DECIMAL ±.005		TITLE: TTS HC-2 SERIES		
FOUR DECIMAL ±.002		SIZE DWG. NO.		
NEXT ASSY USED ON		REV B		
APPLICATION		DO NOT SCALE DRAWING		SCALE 8:1
				SHEET 1 OF 1