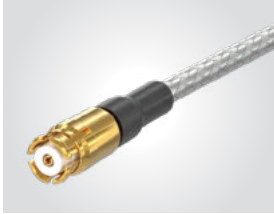


# SMP TO 40 GHz

## SMP Cable Assemblies

RF25S, RF405



### VSWR

**RF25S:** Contact Samtec  
**RF405:** Contact Samtec

| SERIES  | END 1 CONNECTOR   | END 2 CONNECTOR | OVERALL LENGTH  |
|---|---|-----------------|---|
| <b>RF25S</b><br>= MWC-2550-01 microwave cable with 25 AWG solid FEP dielectric<br><br><b>RF405</b><br>= RG 405 (.086") 24 AWG semi-flexible microwave cable | <b>-00SJ7</b><br>= SMP Straight Jack<br><br><b>-00RJ7</b><br>= SMP Right-angle Jack |                 | <b>-"XXXX"</b><br>= Overall Length in millimeters<br><br>-0100 (100 mm) 3.94" minimum |
| <b>ALSO AVAILABLE</b>   |   |                 |   |
| SMA = RF25S   |   |                 |   |
| SMA = RF405   |   |                 |   |

## SMP Cable Connectors

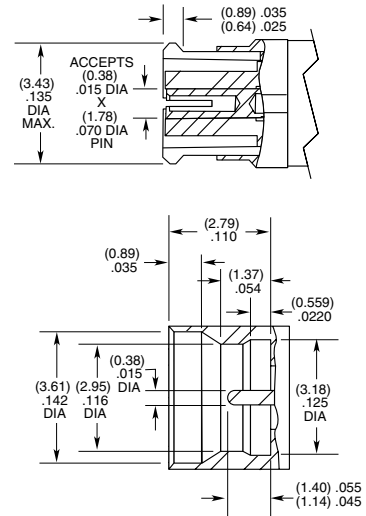
PRF00



| CONNECTORS FOR INDUSTRY STANDARD CABLES |   |
|---|---|
| PRF00-J-C-EE-047A-RD                    | .047 Temp-Flex, low loss flexible, 29 AWG |
| PRF00-J-C-EE-085A-SD                    | .085, semi-rigid, 23 AWG                  |
| PRF00-PF-C-KK-047D-BD                   | .047, semi-rigid                          |

J-C = Cable Jack  
 EE = Plating (50 μ" Gold center contact & outer contact)  
 KK = Plating (100 μ" Gold over Nickel center contact, passivated outer contact)  
 BD = Bulkhead, Direct Solder  
 SD = Straight, Direct Solder  
 RD = Right-angle, Direct Solder

### INTERFACE STANDARD (FULL DETENT)



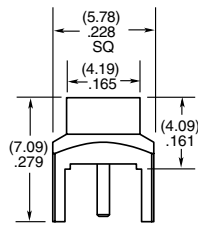
## SMP TO 40 GHz

### SMP Board Connectors SMP-TH, SMP-EM

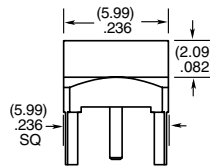
Cable Mates:  
RF405, RF255



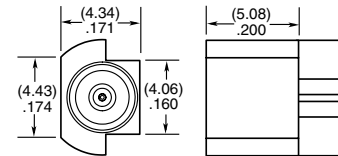
| SMP | GENDER   | TYPE                     | PLATING  | ORIENTATION              | TERMINATION  |
|-----|--|--------------------------|--|--------------------------|--|
|     | <b>-PF</b><br>= Plug, Full Detent<br><br><b>-PL</b><br>= Plug, Limited Detent<br><br><b>-PS</b><br>= Plug, Smooth Bore<br><br><b>-PC</b><br>= Plug, Catcher's Mitt | <b>-P</b><br>= PCB Mount | <b>-GF</b><br>= 10 $\mu$ " (0.25 $\mu$ m)<br>Gold center contact,<br>Gold Flash outer contact<br>(-TH2 only)<br><br><b>-HH</b><br>= 30 $\mu$ " (0.76 $\mu$ m) Gold<br>center and outer contact<br>(-EM3) | <b>-ST</b><br>= Straight | <b>-TH2</b><br>= Through-hole<br><br><b>-EM3</b><br>= Drop-in<br>Edge Mount<br>(Not available<br>with -PC) |



-PF/-PL/-PS-TH2



-PC-TH2

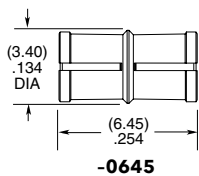


-EM3

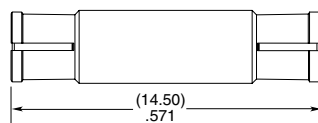
### SMP Bullet Adaptor SMP-B



| SMP | J | TYPE                          | PLATING   | ORIENTATION              | BULLET LENGTH   |
|-----|---|-------------------------------|---|--------------------------|---|
|     |   | <b>-B</b><br>= Bullet Adaptor | <b>-GF</b><br>= 10 $\mu$ " (0.25 $\mu$ m)<br>Gold center contact,<br>Gold Flash outer contact | <b>-ST</b><br>= Straight | <b>-0645</b><br>= 6.45 mm (.254")<br><br><b>-1450</b><br>= 14.50 mm (.571") |

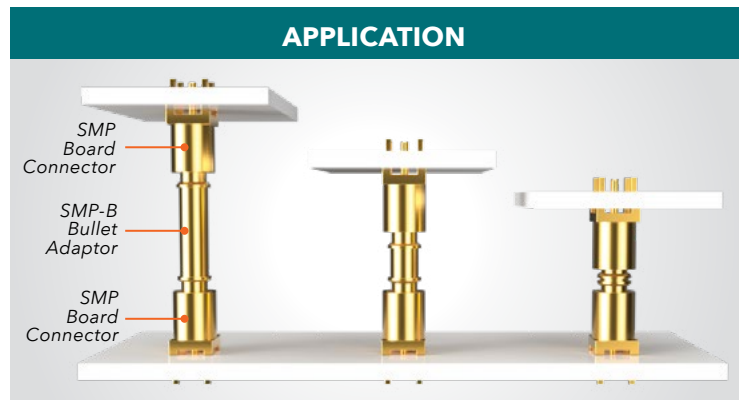


-0645



-1450

### APPLICATION



Compensates for axial & radial misalignment